



Hillsborough Olde Fashioned Christmas 2015

**Saturday
Dec. 5th**

Merchants Open Houses:

- | | |
|---|--|
| <ul style="list-style-type: none"> <input type="checkbox"/> 9am-5pm: Sweet Expressions, 15% off Christmas Gift Items <input type="checkbox"/> 9am-6pm: Radio Shack, 25% off on toys and batteries in stock <input type="checkbox"/> 9am-5pm: Rimmon Height Florist, 10% off flowers & plants <input type="checkbox"/> 10am-5pm: German John, German Bread & Christmas Specialties <input type="checkbox"/> 10am-2pm: Central Square Emporium, Unique Gifts for the Discriminating Buyer, Refreshments <input type="checkbox"/> 10am-9pm: Yanni Pizza, \$2.00 off any pizza <input type="checkbox"/> 10am-5pm: Windsor Cottage, 25% off Most Items <input type="checkbox"/> 10am-3pm: Sausage Source, buy 1 sausage sandwich and get second one free <input type="checkbox"/> 10am-5pm: The Other Ark, 10-25% Off any Items in the Store | <ul style="list-style-type: none"> <input type="checkbox"/> 10am-5pm: Hillsboro House of Pizza, 10% off all piazza <input type="checkbox"/> 10am-5pm: Agway, 20% off bird feeders and 20% off pet toys. <input type="checkbox"/> 10am-2pm: SinCal Chimneys, \$299.00 off Regency wood stoves <input type="checkbox"/> 10am-5pm: Unit 3, 20% Off most items over \$10 <input type="checkbox"/> 11am-4pm: 202 Olde Henniker, 20% off all jewelry <input type="checkbox"/> 11am-9pm: Taco Beyondo, 10% off food only& excludes drinks <input type="checkbox"/> 11am-10pm: Brick House Family, 5% off purchase of any food item <input type="checkbox"/> 11:30am-5pm: Tooky Mills Pub, 10% off entrée or sandwich <input type="checkbox"/> 12am-5pm: Mama McDonoughs, ½ off first appetizer <input type="checkbox"/> 12-9pm: Sampan, 10% off meal dining in only <input type="checkbox"/> 3pm-8:30pm: Mediterrano, Free dessert& Turkish tea with Meal |
|---|--|

Attend at least (5) venues and be eligible for Dinner for Two at Ming Du

Have a host initial your attendance at each venue and turn in at the Tree Lighting

Name: _____ Telephone # _____

Robert Randolph: One of the most intense acts in all of Jamdom

Plymouth, NH - Robert Randolph has been named "The 100 Greatest Guitarists," by Rolling Stone magazine, adding "(He's) one of the most intense live acts in all of jamdom." Expect a high energy night of Funk, Soul, and Blues-Rock at The Flying Monkey Performance Center on Friday, December 11 at 7:30 p.m. Tickets start at \$39.

A virtuoso pedal steel guitarist, Robert Randolph and family celebrate African-American music through the lens of modern music. That music is hailed as American funk and soul at its finest when they deliver the message of hope through their uplifting beat and lyrics. Some have said that the Randolph family sound is reminiscent of the funk and soul of Earth, Wind & Fire and Sly & the Family Stone.

To see them live you will also get a raucous dose of blues rock that moves into improvised jams. Rolling Stone called him "one of the most intense live acts in all of jamdom," citing his solos as "perpetually cresting, lightning-fast explorations."

Eric Clapton took notice of them almost immediately, acting as the catalyst for Randolph going on tours with him, Santana, and the Dave



Matthews Band. As a headline act, they have developed a large, passionate following built upon powerhouse performances at such major festivals as Bonnaroo, Crossroads, Hard Rock Calling, Montreux Jazz, Austin City Limits and the New Orleans Jazz and Heritage Festival. Rolling Stone named Robert Randolph one of "The 100 Greatest Guitarists," the only pedal steel player so honored.

"Robert Randolph is an American Original," says Seth McNally of The Flying Monkey. "His music honors our collective past while bringing it into the

future. That's the heart and soul of the songwriting, but at a live show fans can expect a powerful blues rock performance with raucous doses of funk and soul. Dancing and boogying highly recommended."

Expect an evening that will excite that deepest part of your soul with music, and leave you one a lifelong fan of this exciting new American artist.

Tickets for Robert Randolph and The Family Band are on sale now for \$39, and \$45 for Premier seats. For tickets and more information on concerts and the Flying Monkey Performance Center, visit www.flyingmonkeynh.com or call 603-536-2551.



The colors of the season have arrived and we've hand selected them just for you!



Hobbs Jewelers

Yours... A Wonderful Feeling of Confidence

DIAMONDS

watches • gifts • full service jeweler

DEPOT SQUARE • PETERBOROUGH, NH
924-3086 • nhhobbsjewelers.com

• CHRISTMAS AT CANTERBURY •



Join us!
DECEMBER 5 & 12
3-8PM

CANTERBURY SHAKER VILLAGE
603-783-9511 • WWW.SHAKERS.ORG

Music School presents annual Holiday Folk Concert

Celebrate the season with an evening of holiday music and folk favorites! The Concord Community Music School invites you to take part in what has become a popular holiday tradition: the annual Holiday Folk Concert featuring Susie Burke and David Surette with Kent Allyn. The concert is scheduled for 7:30 pm, Saturday, December 12, in the Music School's Recital Hall at 23 Wall Street in Concord.

The concert will feature a number of selections from their holiday CD release *Wonderland*, along with folk and acoustic fare from their standard repertoire. With influences and styles ranging from folk to jazz, Celtic to rock, blues to Broadway and beyond, this trio presents seasonal repertoire with heart, flair, and energy. Of the trio's holiday CD, Boston Globe music writer Scott Alarik says, "Wonderland is a wintry gem, elegant as a Manhattan midnight, bewitching as hot buttered rum, and as warm and folksy as your grandmother's old quilt. The trio moves gracefully among pop chestnuts, new songs, and ancient carols. Surette's playing on guitar, mandolin, and cittern, is a marvel of melodic purity and ribbon-candy chordal color, lightly augmented by Allyn's quicksilver piano. Burke's twilight mezzo always puts melody before mechanics and heart before dazzle."



Surette and Allyn are members of the Concord Community Music School faculty. This year's Folk Department concerts are sponsored by Sanborn, Head & Associates, Inc.

Admission is \$15 for adults and \$12 for students and seniors. For more information or to purchase tickets, please call (603) 228-1196 or visit www.ccmusicschool.org.

About the Artists

Warmth, vitality, and spontaneity mark the performances of Susie Burke and David Surette, and have earned them a reputation as one of the finest acts on the lively New England folk scene. Recipients of Individual Artist Fellowship awards from the NH

State Council on the Arts, Susie and David are also on the Council's Touring Arts roster. Together they have released eleven albums since 1990, including their most recent, *Waiting for the Sun*.

Kent Allyn is an in-demand accompanist and studio musician, as well as a key member of several groups, including Ben Baldwin & the Big Note and the Night Heron Consort. His stellar bass, piano, and electric guitar work have been heard on numerous recordings, Susie and David's among them.

About the Concord Community Music School

Concord Community Music School is a full member of the National Guild for Community Arts Education and is recognized nationally for program innovation and management excellence. Welcoming adults, teens and children of all musical abilities, 53 artist teachers reach more than 33,000 people in four states with educational programs, concerts, workshops and community partnerships. CCMS has received major funding from the National Endowment for the Arts, the Hearst Foundation, New Hampshire State Council on the Arts, Jane's Trust, and the New Hampshire Charitable Foundation, and is the 2005 recipient of the NH Governor's Arts Award for Cultural Access Leadership.

WITH THE HOLIDAY COMING, WE CAN HELP...

Packing & Shipping • FEDEX, UPS, Trucking
PERSONALIZED: Holiday Cards, Calendars,
T-Shirts, Mouse Pads, Mugs and More!

WE CAN ALSO HELP YOU WITH...

- Black/White Copies
- Color Copies
- Business Cards
- Invitations
- Postage
- Banners
- Posters
- Laminating
- Binding
- Rubber Stamps
- Office Supplies



• WE NOW HAVE POST MAIL BOXES FOR RENT
• MAIL FORWARDING SERVICES FOR SNOWBIRDS & TRAVELERS



AND WE DO IT ALL WITH A SMILE!
HAPPY HOLIDAYS AND A WONDERFUL NEW YEAR!

Peterborough Plaza • 603-924-7088
copies@copies-more.com

Pontine Theatre presents A New England Christmas



Pontine Theatre presents its original production, *A New England Christmas*, featuring original stagings of seasonal stories by three New England authors. Pontine's Artistic Directors, Marguerite Mathews and Greg Gathers, perform *Christmas 1910* by Gladys Hasty Carroll, *The Christmas That Almost Wasn't* by Ogden Nash, and *The Christmas Monks* by Mary Wilkins Freeman.

The show combines lively storytelling and charming Victorian-style Toy Theatre Figures along with seasonal music. These charming holiday tales – in addition to Holiday punch and home-made cookies donated by a host of Pontine supporters – are sure to put you in the Christmas spirit! Performances are



offered Friday @7:30, Saturday @4 & Sunday @2. Tickets are \$24 and may be purchased online at www.pontine.org.

Tickets may also be purchased at the door a half-

hour prior to each performance, based on availability. Pontine's West End Studio Theatre is located at 959 Islington Street, Portsmouth NH. Contact Pontine: info@pontine.org / 603-436-6660.

SLEEP COMFORTABLE - IN STYLE!

SHOP NH'S LARGEST RUSTIC FURNITURE & MATTRESS GALLERY

GOZY CABIN RUSTICS
Furniture & Mattresses

PLYMOUTH – 603-238-3250
742 Tenney Mtn. Hwy.
Just west of Wal-Mart,
in the former Sears building

MEREDITH – 603-279-1333
Mill Falls Marketplace
Across from the public
docks, Rt. 3 & 25

TILTON – 603-286-4500
67 East Main Street
in the former
Agway building

WWW.COZYCABINRUSTICS.COM
OPEN DAILY 9AM-5PM • SUNDAYS 10AM-4PM

180 acres of Scenic Splendor in the Heart of New Hampshire's White Mountains

INDIAN HEAD RESORT

Outdoor Heated Pool-OPEN ALL YEAR
Indoor Heated Pool

Wedding Destination of the North Country

Resort Units with 50" HDTV's
Private Scenic Balconies

BEST OF NH

Exit 33 off I-93, Lincoln, NH 03251
800-343-8000 www.indianheadresort.com

New exhibit opens at the Children’s Museum of New Hampshire

A new exhibit has opened at the Children’s Museum of New Hampshire and it combines all the fun of a sand table, with some interactive and responsive high tech imagery. Guests to the Museum can help shape the landscape with a new augmented reality sand table, installed in the ever-popular Dino Detective area.

The technology behind this new exhibit was developed by the UC Davis W.M. Keck Center for Active Visualization in the Earth Sciences (keckCAVES), as part of an informal science education project funded by the National Science Foundation. This hands-on exhibit allows guests to create topography models by shaping real sand, which is then augmented in real time by an elevation color map, topographic contour lines and simulated water, rain and even snow. The system was created to teach geographic, geologic and hydrologic concepts, but the exhibit takes on a different significance when placed in the Museum’s Dino Detective area.

“The sand table relates to the Dino exhibit well,” says Exhibits Director Mark Cuddy. “Geology looks at changes to Earth’s landscape over time, which helps paleontologists determine where to find fossils and, sometimes more importantly, where NOT to look for fossils.” In the rest of the Dino Detective exhibit, guests can dig for fossils, donning the protective eye gear



and using the specialized tools that paleontologists would use to unearth these remains. “This entire exhibit is about exploration and questioning what we think we know. Why are the dinosaurs extinct? What can we learn from their bones? How does the water flow around the sand? What happens when I build a dam and then break the dam? Where does the

water go?” These kinds of questions are answered, not through labels on a wall, but by the constantly shifting interactivity between the augmented reality component, the sand and the children.

“The best part about this exhibit is that it appeals to everyone. Young, old, new or repeat visitors: Everyone loves to play with the sand!” says Mark. “I’ve heard some great things while watching guests at the table. Things like ‘Woah! Look I made it rain!’ or ‘Let’s all push the sand into a big mountain in the middle of a lake.’ It keeps our guests constantly engaged and learning.”

About the Children’s Museum of New Hampshire
The not-for-profit Children’s Museum of New Hampshire is located at 6 Washington Street in Dover and offers two levels of hands-on, interactive exhibits for children from newborn to middle school. Children can explore a wide range of subjects, from dinosaurs, music and aeronautics to world cultures, art and natural history. Open year-round, the Silver LEED-certified museum specializes in creating memorable family learning experiences and works closely with schools, social service agencies and educators. The museum also hosts a variety of live performances, workshops, classes and special events for families. For more information, please call the museum at (603) 742-2002 or visit www.childrens-museum.org

SANTA IS COMING TO TOWN!

SUNDAY, DECEMBER 6TH
9:00^{AM} - 1:00^{PM}

WEARE DUNKIN DONUTS
427 S. STARK HWY. (LANCTOT’S PLAZA) WEARE, NH

SATURDAY, DECEMBER 12TH
9:00^{AM} - 1:00^{PM}

HILLSBORO DUNKIN DONUTS
258 W. MAIN STREET, HILLSBORO, NH



Come get your picture taken with Santa!
He’ll be in the store, deciding if you’ve
been naughty or nice this year.
Bring your camera!

Strawbery Banke celebrates Annual Candlelight Stroll 'Winter Pastimes'

Strawbery Banke Museum celebrates the theme of "Winter Pastimes" during the 36th annual Candlelight Stroll, December 5-6, 12-13 and 19-20, 2015. The event takes place from 5 to 9 pm on Saturdays and 4 to 8 pm on Sundays. Candlelight Stroll is generously supported by the Lincoln Financial Group, FairPoint Communications, D.F.Richard, Sheraton Portsmouth Harborside Hotel, Newburyport Five Cents Savings, Amica Insurance, Northeast Credit Union, Optima Bank, York Hospital and R.M.Davis.

Showcasing 350 years of winter pastimes and holiday traditions against the backdrop of the Museum's furnished historic houses, Candlelight Stroll anchors the Vintage Christmas in Portsmouth experience, described as the "Christmas capital of North America." On these weekend evenings, the Museum grounds glow with hundreds of lighted candle lanterns, the houses are adorned with thousands of hand-made decorations crafted from live greens, dried flowers and herbs collected from the Museum gardens, and the air is filled with the sound of holiday music and scent of woodsmoke. The Labrie Family Skate outdoor ice skating rink adds to the festive atmosphere, allowing Strollers to take a turn on the ice (skate rentals available) and hosting skaters in vintage costumes.

Visitors stroll from house to historic house, greeted by costumed role players and performers



who recreate the traditions of times past. A toasty bonfire, hot cider in the Cider Shed and winter fare in the Figtree Kitchen café keep visitors warm. Traditional hearth-cooking demonstrations, crafts demonstrations, and winter projects for kids provide interactive fun for multiple generations. Pickwick's at the Banke presents a costumed holiday dining experience in Pitt Tavern (separate ticket required).

"Candlelight Stroll is a cherished holiday tradition that offers a charming setting for children and adults to enjoy America's multicultural holiday activities and customs," said Strawberry Banke Museum president and CEO Lawrence J. Yerdon. "We are delighted to provide this authentic and unique experience."

Now in its 36th year, Strawberry Banke Museum's

Candlelight Stroll carries visitors into holiday lives from the past as the 10-acre outdoor history museum and its 40 historic buildings recreate December through the centuries in the waterfront Portsmouth neighborhood of Puddle Dock. Thousands of decorations, hand-crafted from natural materials grown in the museum's gardens, flickering wood-and-glass candle lanterns, carolers around the bonfire and costumed role-players set the scene for "Winter Pastimes." Mrs. Shapiro prepares a Hanukkah celebration her 1919 Russian Jewish kitchen. Mrs. Goodwin, her family and servants prepare a Victorian Christmas. The night watchman makes his rounds along the dirt lanes; and the Abbotts await news of their soldier fighting in Europe in the Second World War. Carolers, chestnuts and holiday crafts bring all the sounds, scents and moments for family 'stopfulness' to this event that is a cherished New Hampshire tradition. Tickets are \$25 for adults, \$12.50 for children 5-17, and free to children under 5.

Labrie Family Skate, the seasonal outdoor ice skating rink at the heart of the 10-acre living history museum site operates seven days a week, 9 am to 9 pm throughout December and on through New Year's Day, and the months of January and February. The outdoor ice skating rink offers 12,500 square feet of professionally maintained ice surface surrounded by a post and rail fence. A seasonal pavilion houses

Sometimes the best treasures are found off the beaten path

THE CALICO HEN

Seasonal Folk Art for a Happy Heart

Christmas Open House

Fri., November 27 – Sun., December 6

10 a.m. - 5 p.m. Daily

Many Sweet Deals to Entice You...

Gift Certificates & Layaway available

Join us for a celebration
of the Christmas Season

371 Burnham Intervale Rd.,
Contoocook
(603) 746-5659

Regular hours
Wednesday-Saturday 10-5,
Sunday noon-5,
through Christmas Eve,
or by chance or appt.



 www.TheCalicoHen.com



DISCOVER DOWNTOWN!
Concord, NH

SHOP DIFFERENT this season—discover the **NEW** downtown Concord, NH, a charming and unique holiday shopping destination! Shop and stroll at more than 100 stores, offering local & homegrown items, gifts, and appeal as well as your favorite national brands, complete with new streetscape, seasonal decorations, glittering store windows, and personalized service!

BIG shopping, downtown charm!


shop • dine • play • live

EVENTS & STORE LISTINGS—www.intownconcord.org

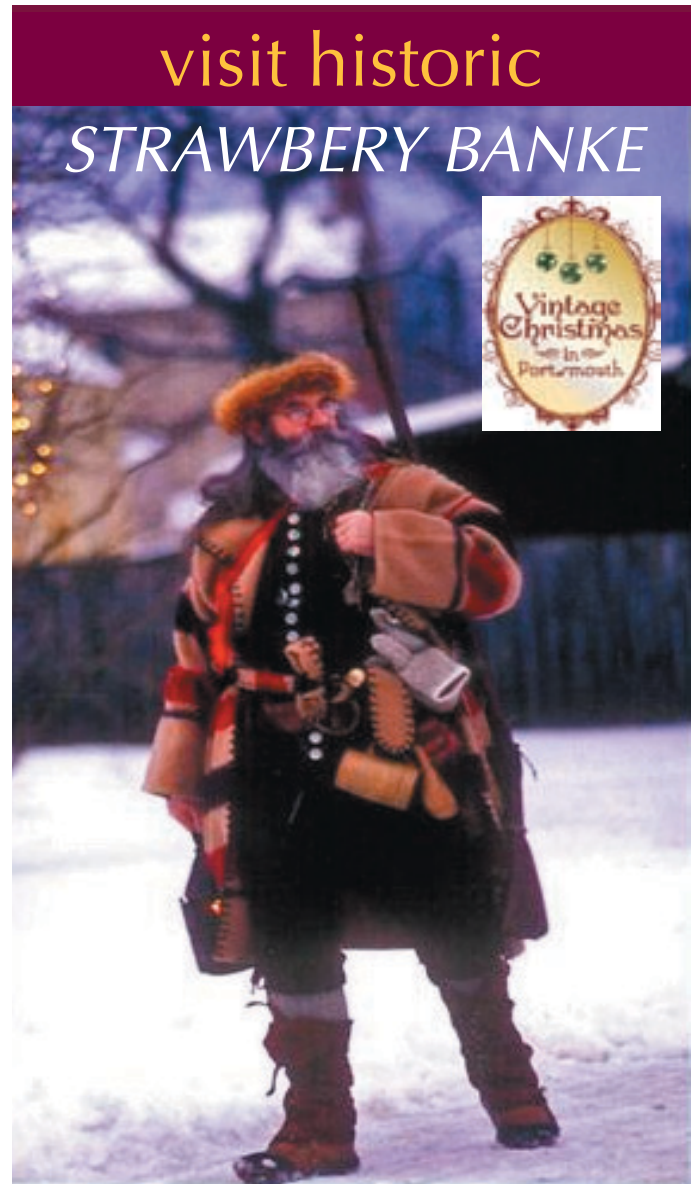
ticketing, skate rentals and concessions.

Pickwick's at the Banke, complements the museum with a shopping experience reflecting Portsmouth's colonial maritime heritage. The museum store is located at 43 Atkinson Street (on the corner of Court and Atkinson) is open to the public with no museum ticket is required. Described as a 'magical space' featuring local art, artisans and products; Pickwick's at the Banke is designed to be a nostalgic space that's accessible to a new generation. The merchandise, the atmosphere and the hospitality of the costumed staff – especially in full-blown Victorian holiday splendor -- make shopping more than a pastime. On the six nights of Candlelight Stroll, Pickwick's and Chef Evan Mallett present a costumed holiday dining experience in the museum's historic Pitt Tavern.

Parking & Other Information

There is ONLY handicapped parking available at the Museum for Candlelight Stroll. All other visitors should take advantage of the City of Portsmouth free Vintage Christmas Trolley which runs on a 20-minute loop, from 1:30pm - 10:30pm on the first three Saturdays and Sundays in December*. With pick up spots at parking lots, hotels and other sites around town, the trolley stops right at Strawberry Banke Museum as well as The Music Hall. *The free Vintage Christmas trolley will be in the City of Portsmouth Holiday Parade on Saturday, December 5 and will not be available from 5-7pm.

The trolley is generously provided by the City of Portsmouth as part of a Vintage Christmas in Portsmouth. Candlelight Stroll is a signature event of Vintage Christmas in Portsmouth a collaboration among the City of Portsmouth, Strawberry Banke Museum, The Music Hall, the Greater Portsmouth Chamber of Commerce and local hotels and retail shops. Now in its 11th year Vintage Christmas in Portsmouth caused Travel + Leisure to say Portsmouth has good reason to claim the title of "Christmas Capital of North America" and the Boston Globe said Vintage Christmas in Portsmouth is "One of the top ten holiday things not to miss in New England." For complete details of the Vintage Christmas events please visit the Vintage Christmas website.



visit historic
STRAWBERRY BANKE

NOVEMBER - DECEMBER

Open for guided tours and special events.
Please visit our online calendar for details.

Costumed Role-players • 40+ Historic Houses
Visitor's Center • Historic Gardens

Labrie Family Skate Outdoor Ice Rink
Dec - Mid-March
Candlelight Stroll Dec 5-6, 12-13, 19-20



Call 603.433.1100
for more info
14 Hancock Street,
Portsmouth, NH 03802
www.strawberrybanke.org

A New Hampshire Tradition Since 1934

Annalee
Since 1934

ANNALEE GIFT SHOP Open Daily 10am-5pm
8 Maple St. Meredith, NH | 800-433-6557 | annalee.com

Calendar of Events

Evergreen Fair 2015

December 3, 2015 10:00 AM Free
 Memorial Union Building, UNH
 83 Main Street, Durham, NH 03824
 Phone: 603-934-6248
 For 38 years, 50 select artists and craftsmen have come together at the University of New Hampshire in what truly has become a celebration of the fine art of craft. Shop Evergreen Fair for perfect gifts or treat yourself to fine handcraft, supporting regional and local artists who work in clay, fiber, metal, paper, glass, wood and more. Discover exquisite furniture, delightful home accessories, original apparel, fine art, handmade musical instruments, one-of-a-kind jewelry and much more for every style and budget. Evergreen Fair's unique signature is the variety and exceptional quality of the pieces presented for sale. The small university town of Durham comes alive with holiday cheer on the weekend of December 3-5, 2015. Fine handcrafts,

sparkling lights, cozy church fairs, and a downtown Holly Day Stroll will fill you with the spirit of the season. Experience small town hospitality at its best. Stay at an immaculately maintained hotel and dine at one of Durham's unique eateries. This year, make Evergreen Fair part of your holiday tradition.

Journey to the North Pole

December 4, 2015 4:00PM \$47/\$57/\$67
 64 Railroad Street, Lincoln, NH 03251
 Phone: 603-356-9980

Join us on the family adventure of a lifetime aboard the magical Journey to the North Pole! The Journey to the North Pole offers a truly unique experience that only happens here in the beautiful White Mountains of New Hampshire, with adventures departing from North Conway and Lincoln, NH. The Journey to the North Pole is a two-hour round trip adventure taking you on a magical trip to see Santa. You and your family will board the Journey to the North Pole train and be served delicious hot

chocolate by our magical chefs, along with Santa's favorite chocolate nougat with centers as white as snow! When you arrive at the North Pole, you will depart from the train and follow the elves up to Santa's Toy Workshop where you'll sing with the elves and hear about a Christmas story. Then, Santa will take a break from his busy schedule to pay you a visit! This Journey will make true believers of all, reminding us that the gift of giving is truly the most cherished gift of all! Net proceeds from the Journey to the North Pole event fund Literacy Programs such as our Books in Character Outreach Reading Program, the Believe in Books Bookbag Program, and the Books from Birth Program in Northern New Hampshire and Western Maine.

Holiday Dinner in Historic Pitt Tavern

December 5, 2015 4:00 PM
 Adults \$65. Children under 12 \$25.
 Strawberry Banke Museum
 14 Hancock Street, Portsmouth, NH
 Phone: 603-433-1100
 Presented by Pickwick's at the Banke. Seated Holiday Dinner in the historic

William Pitt Tavern during Candlelight Stroll. Live music. 4-course colonial holiday fare, menu by Chef Evan Mallett. Libations by The Portsmouth Brewery. Dinner begins with a reception in the Pitt Tavern Courtyard featuring Great Bay oysters on the half-shell. 3 seatings each night, 4 pm, 6 pm, 8 pm

The Nutcracker

December 5, 2015 7:00 PM
 \$20 - adults, \$17.50 - seniors/students
 Group rate available for 10 or more
 Oyster River High School, 55 Coe Drive
 Durham, NH. Phone: 603-834-8834
 Begin the holiday season with a trip to the Land of the Sweets with Clara and her Nutcracker in Northeastern Ballet Theatre's full-length, professional production of this classic ballet. Under the artistic direction of Edra Toth, this magical ballet is the perfect way to spend the evening with your family.

New Castle Village Christmas Fair

December 5, 2015 8:00 AM Free
 301 Wentworth Rd., New Castle, NH
 Phone: 603-431-4456 Don't miss the best Christmas Fair on the Seacoast: ▶

Morse Sporting Goods

Everything for the outdoor enthusiast!

- Leatherman Tools
- Guns & Ammo
- GPS Units
- Smart Wool Socks
- Boots
- Kids Youth Bows
- Ice Fishing Equipment
- Archery Pro Shop ~ Mathews
- PSE ~ Hoyt
- Prime ~ Elite

Gift Certificates Available
www.morsesportinggoods.com 603-464-3444
 85 Contoocook Falls Road • Hillsboro

HAGGETT'S MARINE, INC.

Gift Certificates Available

• BOATS • MOTORS • ACCESSORIES • SUPPLIES

112 Airport Rd., Concord, NH • 603.224.0171 • www.haggettsmarine.com

IF WE CAN KEEP SNOWMOBILERS WARM, WE CAN KEEP ANYONE WARM!

LIVINGSTON'S

464-5454
 123 Henniker St. • Hillsboro, NH • www.livingstonsarcticcat.com

ARCTIC CAT ACCESSORIES!
 We have a complete line of:

- Boots • Suits • Socks
- Helmets • Gloves
- even Underwear

MOODY POND MARKETPLACE

Established 2009

Christmas Trees

(will be available Nov. 27)

Wreaths & Kissing Balls

Many unique garden accents

529-POND 3 George Moody Rd., Weare, NH (across from TD Bank)

Calendar of Events

The New Castle Village Christmas Fair on Saturday Dec. 5 at the Recreation Building from 8 am to 2 pm, sponsored by the New Castle Congregational Church Guild. Get into the holiday spirit as you, all made by the ladies of the Guild, will be available, as long as they last. Many of these items are made with local driftwood, shells and sea glass. Get your copy of the brand new 50th anniversary edition of the famous New Castle Cookbook, hot off the presses. It makes a great gift for all the cooks on your holiday shopping list. Other highlights of the fair include: the Candy Store, Jewelry, Scarfs and Red Elephants, Hospitality Baskets, and the Silent Auction. And of course, Santa Claus will be visiting to listen to the wishes of the children. Start the day off right with steaming coffee and delicious homemade baked goods. For lunch, enjoy fish chowder or lobster rolls, followed by some incredible

desserts. The folks in New Castle really know how to cook!

Homestead Christmas

December 5, 2015 12:00 PM. \$5; ages 4 and under, FREE. 58 Cleveland Hill Road Tamworth Village, NH 603-323-7591
A celebration of the holidays and winter season as realized through the rich history of homesteading. Located on the grounds of a historic farmstead—seasonal festivities, down-home tastings and old-time traditions for all generations!

Jingle Bell Chocolate Tour

December 5, 2015 11:00 PM
\$25 Jingle Bell Chocolate Tour Sleigh Rides and \$10 for Recipe Book
Dinsmore Road Jackson, NH 03846
Phone: 603-383-9356
Nestlenook Estate and the Jackson Area Chamber of Commerce invite you to make your reservations early for the Jingle Bell Chocolate Tour. Named one of the 5 "Tasty Tours of New England"

by the Concord Insider "Engage all your senses". This Horse Drawn Austrian Sleigh Ride through the Village of Jackson is so popular that each year it sells completely out. We recommend you book early to assure your chance to attend. Just call a lodging member listed on our website www.JacksonNH.com book your stay and let them secure your seats today. Reservations are reserved for visitors staying in one of Jackson New Hampshire's premiere properties. Reservations will open to the general public October 12th. Call the Jackson Area Chamber of Commerce any time after October 10th to make your reservations before it is to late... 603-383-9356 or prior to October 10th call any of our lodging members, book your stay and let them secure your ride/s for you. Parties of 10 or more may book at any time throughout the year.

Art in the Mill
December 5, 2015 10:00 AM Free
222 West St., Keene, NH 03431
Phone: 603-533-0478
Art in the Mill, a week-end art and fine

craft show, is coming to Keene. At the Colony Mill, 222 West Street, Keene, NH, the Art in the Mill will be open only December 4 and 5. More than 30 artists will be ready to demonstrate their techniques and make your Christmas gifts special. Various mediums are represented: oil, pastel, pencil and photography artists. Jewelers such as Andrea Lorette and Mary Anne Knapp will be there with the perfect gift for your ladies. And Owen Coursin will show his pottery. Also, both days will showcase several local authors featuring their books. Art in the Mill, will be open on Saturday, December 4 from 10 am to 4 pm and Sunday, December 5 from 11am to 5 pm.

36th Annual Candlelight Stroll

December 6, 2015 4:00 PM
\$25/adults, \$12.50/children (ages 5-17), and \$60/family (2 adults+children <17). 14 Hancock Street, Portsmouth, NH. 603-433-1100
Strawbery Banke Museum's holiday celebrations features decorated

Country Bridals and Formal Wear

"Affordable Elegance"

We pride ourselves on personal service in a relaxed atmosphere.



**Allure Trunk Show
December 11 – 21**

**David Tutera Trunk Show
December 3 – 7**

**Book your appointment now
to try these new designs!**

For all your Bridal, Bridesmaid, Flower girl, Mothers, Special Occasion, Prom and Tuxedo needs



17 Main Street • Jaffrey, NH • 603-532-7641 • www.countrybridals.com

Calendar of Events

historic houses, costumed role-players, strolling carolers and lanes lined with real candle lanterns -- spanning 300 years, "A Winter Visitor" to the Puddle Dock neighborhood. A family tradition. Saturdays, 5-9 pm. Sundays 4-8 pm.

Wentworth Illumination

December 8, 2015 5:00 PM Free
Wentworth By the Sea Hotel
588 Wentworth Road, New Castle, NH
Phone: 603-422-7322

Santa arrives by horse-drawn carriage accompanied by the Portsmouth High School Clipper Band to light the tiny white lights outlining the Victorian seaside resort. Free. Refreshments. Gingerbread House. Carolers and costumed characters from Great Bay Academy of Dance "1836 Portsmouth Nutcracker" ballet. "Grinch" ice sculptures.

Inn to Inn Holiday Cookie Tour

December 12, 2015 11:00 AM

\$27 per person. 3582 White Mountain Highway, North Conway, NH 03860
Phone: 603-356-9025

Visit Country Inns in the White Mountains and receive holiday cookies and recipes, and tours of the inns. Annual Inn-to-Inn Herb Tour sponsored by Country Inns in the White Mountains. Also see 1785 Inn's famous winter/holiday decorations (chosen as one of the top 10 inns in the world for holiday decorations). 1785 Inn packages for couples include two Cookie Tour tickets, lodging for two, and our delicious full breakfasts for two. One night packages starting at \$139 per couple and two-night packages starting at \$178 per couple. Call 603-356-9025 to reserve.

Christmas in Amherst Village House Tour

December 12, 2015 10:00 AM
\$30 advance; \$40 day of the tour
11 Church Street, Amherst, NH 03031

Phone: 603-673-3231

This classic tour returns to Amherst Village on Saturday, December 12, where five historic houses will be beautifully decorated for the holidays. This wonderful community event attracts visitors from all over New England; some with interests in the house's history, others in the decor, and many more that are simply looking to embrace the holiday spirit! All funds raised go towards the maintenance of the 1771 meetinghouse on the green. For further details and to order tickets, please visit: ccamherst.org

Currier & Ives Cookie Tour

Troy, NH 11th Annual Currier & Ives Cookie Tour, will take place December 12, 2015 from 11:00am until 4:00pm. The tour includes 15 local inns and businesses throughout the Monadnock Region. Each stop will feature a sweet treat and refreshments. Tickets are \$12.00 each and are available at The Inn at East Hill Farm in Troy, The Monadnock Inn in Jaffrey, The Woodbound Inn in Rindge, Little River Bed and Breakfast

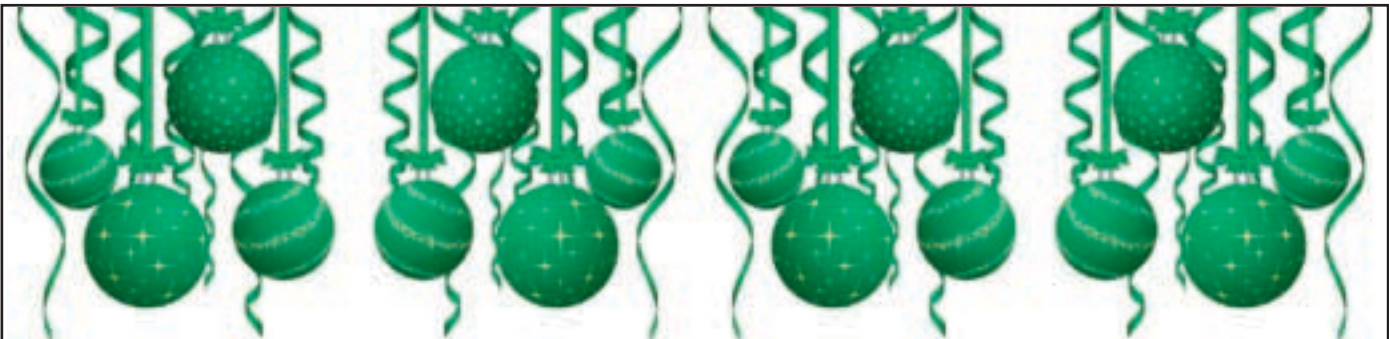
in Peterborough, and the Swanzy Historical Museum. A portion of the proceeds will be donated to Santa's House in Jaffrey. For more information: Holly LeClair, The Inn at East Hill Farm, 603-242-6495

cookie tour@yahoo.com

www.currierandivescookie tour.com

A Victorian Christmas on the Farm

December 19, 2015, 10:00 AM, \$10 adult, \$5 child. Museum members \$6/\$3. 1305 White Mountain Highway/ Rt. 125, Milton, NH 603-652-7840
Experience an Old-fashioned Christmas on the Farm at the New Hampshire Farm Museum. Bundle up and enjoy a horse drawn sleigh or wagon ride according to the weather. Tour the beautifully decorated historic Jones Farmhouse with costumed role players and experience a Victorian Christmas. Roast chestnuts over the fire, visit the farm animals, make a hand-dipped candle to take home and enjoy gingerbread and hot cider. Visit the museum's country store for holiday shopping.



Peace.



Comfort.



Joy.



Come to a magical old barn - where it feels especially like home during the holidays.
• Exquisite Trollbeads • Gold level Vera Bradley Shop • Multiple themed trees loaded with ornaments!
• Alex and Ani • Byers' Choice Carolers • Stonewall Kitchen Pantry • Crabtree & Evelyn • The Thymes

Rt. 101, Peterborough • 924-7906 • Open 7 Days a Week • www.blackswanNH.com





LIKE TO KNIT?

Come in and Browse!

Hodgepodge
Yarns & Fibers

Homespun & Hand Knit Wearables

59 Belknap Avenue • Newport, NH (603) 863-1470
Mon.-Fri. 9:30-5:00; Sat. 9:30-4:00 Mastercard/Visa



Enchanted Lace A Specialty Boutique...

Unique Accessories & Gifts...
Downton Abbey Jewelry...
Luxury French Linens and Table Lace...
Kennebunk Home Throws

Salzburg Square
292 Route 101,
Amherst, NH 03031
(603) 673-5223

www.enchantedlace.com

Wishing You A Magical Holiday Season



Bartlettyarns
PO Box 36 Harmony, ME
www.bartlettyarns.com

100% Wool Yarns
2 Ply-3 Ply-Sport-Bulky-Rug
Roving-Blanket-Knitwear-Supplies

America's Historical Yarn
Since 1821

Crew necks/Skimmer Hats



The Four Corners Brick House

IN HISTORIC GILMANTON, NEW HAMPSHIRE

Antiques, Reproductions, and Quality Consignment

*Closing for the season December 31st
Re-opening April 1st*

Hours:
Mon.-Sat. 10-5; Sun. 12-4
fourcornersbrickhouse.com

267-6949
525 Province Rd.
Gilmanton, NH 03237



Christmas on the Farm

Saturday, December 19 * 9 am - 3 pm

Pictures with *Santa*
Full day of activities,
lunch & more!

\$25.00 per adult; \$20.00 per child
Reservations required * 603-242-6495

The Inn at East Hill Farm
Troy, New Hampshire



~ Since 1952 ~

THE FINEST SELECTION OF
LEATHER APPAREL & GIFTS

Howard's Leather
There's Nothing Like Real Leather

1651 Rte. 9, Spofford, NH
800-427-4038
howardsleathernh.com

Mon.-Sat. 9:30-5:30; Sun. 12:00-5:30



Native Spirit & Many Blessings To All from

THE TURQUOISE SHOP

Authentic Handcrafted Jewelry & Art Direct from the Southwest

GREAT HOLIDAY SPECIALS

NEW LOCATION
at The Amherst Street Mall
427 Amherst Street • Nashua, NH
<http://The-Turquoise-Shop.com/>

(603) 880-3974
CALL FOR HOLIDAY HOURS



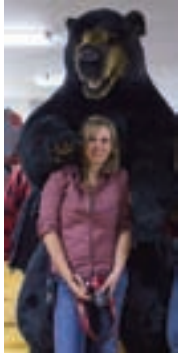
YANKEE FARMER'S MARKET
Buffalo Farm & Store
(603) 456-2833

Holiday Gift Packages and Holiday Dinner Available!

360 Route 103
(East of Town)
Warner, NH

We ship everyday!
SHOP ONLINE @
www.yankeefarmersmarket.com

VRA Vermont Retail Association 2013 Retailer of the year



Boot Hill : Over 20,000 pairs of boots and shoes in stock. We can fit your feet and your lifestyle

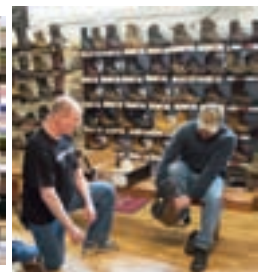


Tax free footwear and clothing



Complete Outfitters for Man and Beast

For Women who love to shop and even men who don't



Vermont Maple Syrup
 Quarts \$12.95 1/2 gal \$23.95
 Cabot 3lb cheddar \$11.99



286 Waits River Road Bradford, VT 800 -222-9316 Monday- Saturday 8:30-5:30 Friday night till 8 PM closed Sundays
 Plenty of free parking Explore 18 acres Not your typical shopping experience 2/10 mile past the only traffic light in the county