

IN New Hampshire

MAY 2016

Your Guide to What's Happening in the Granite State



EGWISS
Presorted Standard
U.S. POSTAGE
PAID
Permit #130
Portsmouth, NH
Postal Customer

Cellist Wendy Warner.
Halcyon Music Festival

FREE See us online at
www.granitequill.com

INNew Hampshire
Your Guide to What's Happening in the Granite State!

Leigh Bosse: Publisher
Joyce Bosse: Editor

Christi Macomber: Advertising Design

Gail Stratos: Publications Design & Layout, Advertising Design, Production, Website

Deborah Belanger: Account Representative

Mary Yuryan: Account Representative

Jim Walsh: Account Representative

Granite Quill Publishers

246 West Main St., Hillsborough, NH 03244
Phone: **603-464-3388**

Taste of Monadnock & Beyond Food & Wine Festival 2016

Shelter From The Storm will be holding their second annual TASTE OF MONADNOCK & BEYOND FOOD & WINE FESTIVAL at the Woodbound Inn, Rindge, NH on Sunday, May 15 from 5 to 8:45 pm. Once again Rudy Rosalez, owner of the Inn, has generously donated the use of his restaurant, playbarn, ballroom, and grounds for this fundraising event.

With over 350 people attending last year, the event went beyond our wildest expectations. This year is proving to be even better! There will be live music during the event with fireworks by Atlas! Vendors include well-known wineries, restaurants, local growers, brewers, cooking demos, an art show, and much more. Come and have a "Tasting Dinner" with us.

Enjoy the different specialties each restaurant has to offer, find a new restaurant or wine you might enjoy, and help to support Shelter from the Storm, a transitional housing and support program for the homeless.

For more information about Shelter or to buy tickets, please visit the website at www.shelterfromthestormnh.org.

Participants to date: • Labelle Food and Winery • 532 Cafe • Sam Adams • The Pearl • Burdick's Restaurant • Woodchuck Cider • Fitzwilliam Inn • Harvest Thyme

Herbs • Linda Harris, Artist • Short & Sweet • Twisted Tea • Alicia Drakiotes, Artist • Baystate Wine & Spirits • Cakes for All Occasions • Kendra Shea, Artist • Two Roads • Porter Hill Sweets • Grafton Village Cheese • Monadnock Inn • Monadnock Vinegar and Oil • Chris Reid, Artist • Ava Marie Chocolates • Harpoon • Shattuck Catering • Luca's Mediterranean Cafe • Elizabeth Glass, Artist • Angry Orchard • Woodstock Inn Brewery • Waterhouse • Mary Iselin, Artist • Woodbound Inn • Sunflowers • Attar Herbs • Joan Tierney, Artist • N.E. Everyday Goods • Vermont Quince • Nelson's Candies & Local's Cafe • Ruth's Mustard • Boggy Meadow Farm

• Maryann Mullet, Artist • Main Street Cheese • Bantam Grill • Alcohol by Volume • Pacific Highway • Three Badges • R. Stuart & Company Winery "Big Fire"

Please contact Linda at 603-532-8222 for more info. Tickets are on sale in Jaffrey and Rindge at the Jaffrey Chamber, Woodbound Inn, Sunflowers, the Monadnock Inn, and online at our website [HYPERLINK "http://www.shelterfromthestormnh.org"](http://www.shelterfromthestormnh.org) www.shelterfromthestormnh.org on the Events page. Tickets will also be available at the door. Charge cards will be accepted online and at the door. Tickets are \$40 or \$45 at the door.



Muddy Paw SLED DOG KENNEL

603-545-4533 DOGSLEDNH.COM

Rolling Dog Sled Rides & Kennel Tours Available Daily
Ages 2+ • Reservations required

Proceeds help support the rescue and second chance sled dogs that call us home

Citizens Bank | PERFORMING ARTS SERIES

SINGIN' IN THE RAIN

Screenplay by BETTY COMDEN and ADOLPH GREEN

April 15 - May 7
603.668.5588 PalaceTheatre.org



Find Your Adventure: Watching the Water Fall

Spring is the perfect time to take the Mt Washington Valley Waterfall Tour. In what Yankee Magazine calls "the ultimate rock concert", Mt Washington Valley, NH offers a host of ideal locations for waterfall viewing, and come May those who love to see the water fall will get a good look as snowmelt turns to rushing falls. No where in New England are waterfalls as abundant and accessible for viewing. Visit the following locations for the perfect photo opportunity and a self-guided tour of rushing falls.

Sabbaday Falls: There are three drops in the falls, pretty pools and a pothole formed by the swirling waters and sand. You can't swim here, but it's a great spot for picnics. Directions: Take the Kancamagus Hwy from Conway. The Sabbaday Falls Picnic Area is about 3.5 miles west of where Bear Notch Road joins the Kanc. The falls are a short 0.33 mile hike in.



Dan Houde/Wiseguy Creative Photography

Glen Ellis Falls: The Ellis River plunges 64 feet to the basin below in a torrent of white water here. Make sure to stop and read the signs that describe the geology and history of the area. Directions: The turn-off to the falls is 0.7 miles south of Pinkham Notch on Route 16. This is also the parking area for the Glen Boulder and Wildcat Ridge Trails. A tunnel takes you to the other side of the highway where you turn right to reach the falls. It's a relatively easy 0.2 mile walk to the falls.

Crystal Cascade: This is a two-tiered spectacular fall, with a dramatic 60' wall of water, followed by a 20' plunge, ending with the river making a 90 degree turn at the bottom. Directions: Park at the AMC Pinkham Notch Camp and take the path on the left of the Trading Post - the Tuckerman Ravine Trail. The falls are a 0.3 mile walk up.

Thompson Falls: This is actually a series of falls along Thompson Brook at Wildcat Ski Area. The views to Mt. Washington from the highest ledge are worth the trip! Directions: Take Route 16 to Wildcat Ski Area. To reach the falls, take the "Way of Wildcat" Nature Trail from the ski area's parking lot. At the far end of the trail loop, you'll find the path to the falls. It's a 0.7 mile easy trek to the falls.

Arethusa Falls: Measuring in at about 176 feet, these are the highest single falls in New Hampshire. A bonus here is Bemis Brook Falls, Fawn Pool and Coliseum Falls can all be visited at the same time. Directions: Take Route 302 toward Bretton Woods and look for Crawford Notch State Park entrance. Turn onto a paved road just beyond the park and park on the short side road below the railroad tracks. The trail starts to the left of the private road above the RR tracks and it's about 1.3 miles to the falls (2 miles if you take the trail to Bemis Brook Falls, Coliseum Falls & Fawn Pool).

Flume Cascade & Silver Cascade: These falls are easily viewable from the car, but you can get close for a better look. Directions: On Route 302, just below Crawford Notch Depot.

Ripley Falls & Kendron Flume: An easy hike with swimming holes at the top of the falls and pools upstream. It's not safe, however, to climb the face of the falls. Directions: The Arethusa-Ripley Falls trail is off Route 302 at the old Wiley House station.

Jackson Falls: These are one of the popular watering holes for locals on a hot summer day. Easily accessible, they offer wonderful pools and small falls to cool off under. A few picnic tables nearby offer the perfect spot for a picnic lunch, dinner or cocktail. Directions: Take Carter Notch Road about 3/10 mile from Route 16A in Jackson.

Diana's Baths: On a full moon night, this is one of the most romantic places in the world. The water supply for the area is located above this, so no access is allowed above, but this series of small falls, and pools offers the perfect place to cool off. You'll hike about 1/2 mile in, following a well-marked trail to find them. Directions: Access the trailhead from west Side Rd. about 1/2 mile beyond the point where West Side Road turns toward Conway. For more information on outdoor adventure and visiting Mt Washington Valley go to www.mt washingtonvalley.org or call 1-800-367-3364.

PARKER'S MAPLE BARN

One of New Hampshire's Top Restaurants

Featured in Yankee Magazine's
Editor's Choice Award —



Best Place to Visit
2013, 2014, 2015, 2016



NH Magazine's
Reader's Choice Award for
Best Pancakes
2013, 2014, 2015



IN OUR EXPANDED GIFT SHOP AND COUNTRY STORE...

- Native American Arts & Crafts
- Lots of Affordable Jewelry
- Tons of Maple Products & Gift Baskets
- Mail Orders Available
- We Ship Anywhere

MASON, NEW HAMPSHIRE

(only 3 miles off Route 13) Call for Best Directions
(603) 878-2308 or 1-800-832-2308

Restaurant & Gift Shop Hrs:
Mon.-Fri. 8^{AM} - 2^{PM}; Sat. & Sun. 7^{AM} - 4^{PM}

Visit our online store!

For more info: <http://www.parkersmaplebarn.com>

GOLF

Golf Channel airing "National Instruction Day" with PGA of America

Eight Live Hours of Clinics to Feature Renowned PGA Professionals: Breed, Hall, Haney, Harmon, Leadbetter, McCormick, McLean & Utley

Live Programming Begins at 10 a.m. ET Spanning Four U.S. Time Zones at: Baltusrol, Ibis, Keeton Park, Cog Hill, Fossil Trace & TPC Harding Park

Golf Channel – in partnership with the PGA of America – announced its plans for the inaugural "National Instruction Day," airing on Wednesday, May 4, and featuring a dedicated day of live programming devoted to helping golfers improve their game. National Instruction Day will bring together several of the most respected and recognized PGA Professionals in the game – a culmination of a 100-day campaign celebrating the PGA of America's Centennial – staging live clinics on Golf Channel, originating from golf courses around the United States, and spanning across four time zones, beginning at 10 a.m. ET.

"National Instruction Day may be the most impactful instruction initiative we've ever engaged in at Golf Channel," said Kevin Schultz, senior director of lifestyle content for Golf Channel. "And that's significant, given that instruction has been a pillar of our brand from the very beginning. With the support

of the PGA of America and its Professionals, for the first time ever, we'll be able to assemble the game's most distinguished instructors on one given day, with one goal in mind: to help golfers play better and have more fun."

"When the PGA of America's founders gathered a century ago, they made it their mission to elevate the golf profession. The cornerstone of their plans was teaching the game," said PGA President Derek Sprague. "We're thrilled to partner with Golf Channel to present National Instruction Day, which will be celebrated from coast-to-coast and dedicated to the generations of PGA members who have ensured that all may enjoy the game of a lifetime."

Each of the six golf course locations participating in National Instruction Day will feature a lead PGA Professional, along with two guest instructors working in collaboration on a live, one-hour clinic from their respective location. Participating PGA Professionals include: Michael Breed, Martin Hall, Hank Haney, Craig Harmon, David Leadbetter, Cameron McCormick, Jim McLean, Stan Utley, along with several others, including PGA President Sprague and PGA Secretary Suzy Whaley. The schedule of

programming airing throughout the day, as well as corresponding instructors at each site includes:

Wednesday, May 4: National Instruction Day Schedule (All Times ET)

7 a.m.-10 a.m. Golf Channel's Morning Drive (Orlando, Fla.)

Special Guests: Pete Bevacqua, CEO, PGA of America (in-studio);

Blair O'Neal & Jeff Ritter (in-studio co-hosts for National Instruction Day)

10 a.m.-11 a.m. Baltusrol Golf Club (Springfield Township, N.J.)

Lead Instructor: Michael Breed

Guest Instructors: Lou Guzzi, Tom Henderson

Special Guest: Derek Sprague, President, PGA of America

11 a.m.-Noon Ibis Golf & Country Club (West Palm Beach, Fla.)

Lead Instructor: Martin Hall

Guest Instructors: Jim McLean, Craig Harmon

Golf Channel Host: Sara Brown

2 p.m.-3 p.m. Keeton Park Golf Course (Dallas)

Lead Instructor: Cameron McCormick

Guest Instructors: Tony Martinez, Randy Smith

Golf Channel Host: Matt Adams

4 p.m.-5 p.m. Cog Hill Golf & Country Club (Lemont Township, Ill.)

Lead Instructor: Stan Utley

Guest Instructors: Todd Sones, Kevin Weeks

Golf Channel Host: Charlie Rymer

6 p.m.-7 p.m. Golf Channel's Golf Central (Orlando, Fla.)

Special Guests: National Instruction Day instructors

7 p.m.-8 p.m. Fossil Trace Golf Club (Golden, Colo.)

Lead Instructor: Hank Haney

Guest Instructors: Trent Wearer, Sandy LaBauve

Golf Channel Host: Brian Crowell

8 p.m.-9 p.m. TPC Harding Park (San Francisco)

Lead Instructor: David

Leadbetter

Guest Instructors: Suzy

Whaley, Secretary, PGA of

America; Josh Zander

Golf Channel Host: Lisa

Cornwell

9 p.m.-11 p.m. Golf

Channel Studio A

(Orlando, Fla.)

Lead Instructors: Michael

Breed, Martin Hall

Guest Instructors: Mike

Bender, Cheryl Anderson

Oak Hill GC

9 Holes • Meredith NH

279-4438



Friendly!
Scenic!
Reasonable!

Angus Lea Golf Course

- ▶ 9-Hole Golf Course
- ▶ Memberships Available
- ▶ Public Invited
- ▶ 11am to 2pm **Golf Special** Monday-Thursday \$16/9

www.anguslea.com

126 W. Main St. Hillsboro • 464-5404



LODGING
Opening May 20th

Jack O'Lantern RESORT

We overlook mountains, golf course, ponds, bridge & river. Golfing Discounts for locals! Stay 3 + nights, 20% off/Mention: InNH! Exit 30 off I-93. 800-227-4454 • www.jackolanternresort.com

Twinkle Town
MINIATURE GOLF

Family Owned & Operated since 1961
Route 12 South of Keene
Beyond Cheshire Fairgrounds
Open 7 Days & Nites from 10 AM
Call 352-6784

19 Holes
\$3.75 per person -
Replays \$.50

Batting Cages
Softball - Baseball

Ice Cream, Hot Dogs, French Fries, Fried Dough & Drinks
40 flavors of Hard Pack
24 and more of Soft Serve
Frappes • Floats • Sundaes
• Banana Splits

Discount subscription tickets available for Halcyon Music Festival

Discount subscription tickets for Halcyon Music Festival, which features world-class chamber music performances around the NH Seacoast each summer, are now on sale. Now in its third season, Halcyon Music Festival's mission is to enhance the growth of chamber music and make it accessible to a broad audience. The series of seven concerts will kick off with "Bohemian Rhapsody" on Wednesday, July 20 in Exeter, NH. The festival includes several concerts in Portsmouth as well as performances in Durham and Rye. The season concludes Saturday, July 30 in Portsmouth with "The Final Serenade."

This year's Halcyon Music Festival roster of international virtuosos includes violinists Miki-Sophia Cloud, Gabriela Diaz, Katherine Manker, Irina Muresanu, Monica Pegis, Ben Sayevich; violists Tatjana Mead Chamis, Chung-Hoon Peter Chun, Tim Deighton, Robert Meyer, and Yizhak Schotten; cellists David Hardy, Brian Manker, and Wendy Warner; pianists Lolita Lisovskaya-Sayevich and Heng-Jin Park; and French hornist Abel Pereira.

"What makes Halcyon Music Festival unique is that the participating musicians—who come from all over the world—closely collaborate over a two-week period as they live, work and perform together in the Seacoast," noted Heng-Jin Park, the Festival's Artistic Director. "This intensive experience for the musicians ultimately produces a series of passionate



and compelling performances that audiences won't hear elsewhere."

All concerts begin at 7:30pm unless otherwise noted. The 2016 Halcyon Music Festival schedule includes:

Wednesday, July 20: "Bohemian Rhapsody" at Phillips Exeter Academy Library at 7:00pm (Part of the Phillips Exeter Academy Library Summer Concert Series). Program will include Reicha's Grand Quintet for Horn and String Quartet; Dvořák's Piano Trio in F minor, Opus 65; and Suk's Piano Quartet in A minor, Opus 1.

Friday, July 22: "Vive La France" at St. John's Episcopal Church in Portsmouth. Program will include Ravel's Sonata for Violin and Piano; Debussy's String Quartet; and Chausson's Concerto for Violin, Piano, and String Quartet.

Saturday, July 23: "Elegance, Jubilation,

and Heartbreak" at St. John's Episcopal Church in Portsmouth. Program will include Böhner's Variations for Horn and String Quartet, Opus 24; Strauss' String Sextet from the opera 'Capriccio'; and Mozart's String Quintet in C Major, K. 515.

Wednesday July 27: "Novelties from Eastern Europe" at St. George's Church in Durham. Program will include Dvořák's Bagatelles for String trio and Harmonium, Opus 47; Kodály's Serenade, Opus 12; and Haydn's String Quartet 'Largo', Opus 76, #5.

Thursday, July 28: "Made in USA" at Rye Congregational Church in Rye. Program will include Barber's String Quartet (Adagio); Dvořák's Piano Quartet no. 2 in Eb Major, Opus 87; and Schoenfield's Café Music for Piano Trio.

Friday, July 29: "The Four B's—Bach, Beethoven, Bolcom, Brahms" at St. John's Episcopal Church in Portsmouth. Program will include Bach's: Jesu, Joy of man's desiring for solo piano; Beethoven's Piano Trio in Bb Major, Opus 11; Bolcom's Ragtime for string quartet; and Brahms' String Sextet in G Major, Opus 36.

Saturday July 30: "The Final Serenade" at St. John's Episcopal Church in Portsmouth. Program will include DeFalla's Suite Populaire Espagnole; Beethoven's Piano Quartet in Eb Major, Opus 16; and Tchaikovsky's Serenade for Strings. For more info visit www.halcyonmusicfestival.org/concerts/.

The Prouty

July 8 & 9, 2016

Register today
TheProuty.org



5, 10, 15 or 20 miles



20, 50, 77, 100 or 200 miles

NEW
FRENCH POND
ROAD LOOP



3K, 6K, 9K, 12K
5, 10, 15 or 20K

NEW RESIDENTIAL
ROUTES



4 - Person Scramble

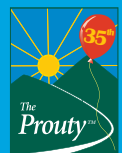
NEW FORMAT

#TheProuty



Benefitting cancer research and patient supportive services
at Dartmouth-Hitchcock Norris Cotton Cancer Center

Info@TheProuty.org
1-800-226-8744





Welcome to the 2016 NH Renaissance Faire coming May 7- 8 & 14-15

The 2016 New Hampshire Renaissance Faire is celebrating 12 years as the best Medieval Faire in New Hampshire. It is a family friendly, educational, visual, theatrical and fantastical event held in gorgeous, Kingston, NH. It is a short drive to find the best place that has something fun for everyone.

NHRF is a 501c3 corporation dedicated to raising money for charity. Last year NHRF gave \$33,000 to local charities Our charities this year are NH Food Bank and Rockingham Meals on Wheels. These

charities provide food and support for our friends and neighbors in need. We are also donating the auction proceeds to the Granite State Arts Academy.

Every year the faire is improved with new or better events. There are knights battling, belly dancers dancing. There are thieves thieving and jousting. There are wonderful singers and musicians. There are great comedy acts and a May Pole to dance around. There's a children's area with face painting, crafts, games and a story teller to expand the

children's imagination. Children can see how sheep's wool becomes clothing. Browse 65 merchants and craftsmen making and selling anything you can imagine.. Watch demonstrators show how things are made. There is a new Queen's Stage to highlight the Shire Queen and her court as they are entangled in complicated plots. Young ladies can have tea with the Queen. Young pages can be knighted by one of the Queen's Knights. Enjoy diverse and yummy food. 35 acres of woods and

Vermont Made ALUMINUM DOCKS, SWIM FLOATS & more



Create an oasis in your backyard...

Go easy on your back this year with one of our beautiful docks constructed from lightweight aluminum right here in Vermont. Our docks are sturdy and virtually maintenance free. There are no sharp edges or abrasive materials to worry about. Choose from rustic cedar decking or more modern Thruflow composite decking. Our docks come in any size or configuration....we design it to fit your needs.



We also fabricate aluminum truck racks and folding goat milking stands. We can also repair most anything aluminum. Give us a call...we'd be happy to assist you.

Hartford, VT (Route 14 behind the CT Valley Auto Auction)

Find us on the web at www.highcountryaluminum.com

802-281-8245 • Toll Free 877-274-2721

Email: vt docks@gmail.com Open Mon-Fri 8:00 to 4:30





meadows make a perfect setting for relaxation, fun and entertainment. On May 7th there will be a Beltain Celebration after hours. (Beltain celebrants need to buy a Faire ticket)

Easy to get to! Plenty of free parking & handicap

parking. This is an outdoors event and is open rain or shine. Free shuttle buses will give you a ride right from parking to the main gate. Have fun and help families in need at the same time.

Dates: May 7-8 & 14-15

Time: 10am - 5pm

Location: 9 Thorne Rd., Kingston, NH 03848

www.nhrenfaire.com

Tickets: Adults- \$12 Kids- \$8 (kids 4 and under are Free) , Seniors & Vets - \$10

 Explore Your Style!

Settlers[®] Green | **Settlers[®] Crossing** | **Settlers[®] Corner**

WHITE MOUNTAIN HWY, NORTH CONWAY, NH
settlersgreen.com

NH Boat Museum exhibit "We've got you covered" magazine cover

The 2016 season at the New Hampshire Boat Museum will be filled with plenty of new and exciting exhibits and activities. Here are some of the highlights. The Museum will host a number of exhibits that explore the world of boating and life on New Hampshire's many lakes. The featured exhibit, "We've Got You Covered: Art From MotorBoating Magazine Covers 1914-1935," looks back at a time when magazine covers were true works of art. The exhibit is on loan from the Antique Boat Museum in Clayton, New York.

Before the advent of digital graphic design, many magazines commissioned artists to create paintings to be used on their magazine covers. Most people are familiar with Norman Rockwell's Saturday Evening Post covers. MotorBoating magazine also commissioned cover artists. The artists' paintings depicted what was then the latest motor boats driven by beautiful women and men. Today, these covers are not only visually appealing, but are historically interesting because they let us see boats from a bygone age.

"We've Got You Covered" is just one of the Boat Museum's attractions for this season. Another exhibit, "The Seduction of Speed: Ice Boating" will look at the lure of ice boats. The exhibit will feature the Boat Museum's newly restored 1920s ice boat, a vintage skate sail, along with historic photos, video footage,

and other ice boating memorabilia.

The third exhibit will be on "McDuff Motors: A Local Enterprise." The exhibit features McDuff motors from the collection of Jeff Fay, as well as the New Hampshire Boat Museum. And, of course, the Museum will feature a wide range of glorious vintage boats on display from the Museum's permanent collection as well as ones on loan from other collectors. One thing the New Hampshire Boat Museum is known for are educational programs that get you out actively learning boat-related skills with your hands.

If you are interested in learning to sail the Museum offers youth and adult sailing lessons in conjunction with the town of Wolfeboro. Or you can rent a share in our J-24 sailboat if you want to sail this summer but don't want the expense of owning your own sailboat. And if you'd like to race your sailboat, you can enter the Lake Wentworth Sailing Regatta in early August. The regatta is a joint program between the Boat Museum, the Town of Wolfeboro, and the Lake Wentworth Association.

The Boat Museum has fun programs for kids of



all ages, from 5 to 100. Do you want to build your own boat? You can do that in our boat building programs. The Museum offers two sessions. One for adults and families in July and the other for youth over 12 in early August. Maybe you'd like to race radio-controlled model yachts? The Back Bay Skippers meet each Tuesday and Thursday afternoon on Back Bay. Stop by to try your hand at this fun and addictive sport. And for your kids or grandkids, don't forget the Museum's fun and active Lake Discovery Camp in late July. Kids

will learn about boat safety, play plenty of fun boat- and water-related games, conduct water experiments on a floating classroom, and ride the Millie B. And new this year, the kids will also become Watershed Warriors. All these activities are part of the Museum's mission to teach young people about boating and water safety and to help them become good stewards of our environment.

To see the full schedule of events or to learn more about the New Hampshire Boat Museum, please visit the Museum's website at nhbm.org.

**LIVE LOBSTERS HARD AND SOFT SHELL
BAKED | FRIED | BROILED | GRILLED | BLACKENED SEAFOOD
STEAKS | CHICKEN & MORE | HARD & SOFT ICE CREAM!!**

PETEY'S
Summertime Seafood & Bar

**FROM OUR BOAT
TO YOUR PLATE!**

1323 Ocean Blvd, Rte 1A, Rye, NH 603.433.1937 www.petey.com

ON THE WATER | OPEN YEAR ROUND | OCEANVIEW DECK MAY-SEPT, WEATHER PERMITTING

Finally, a one-stop location for competitions in the Valley

North Conway, NH – For centuries, the White Mountains have lured competitors and athletes to our little corner of New Hampshire for competitions, and now you can find a list of all the key races and competitions at CompeteMWV.com.

From car, foot and bike races up the tallest peak in the Northeast to five-part pentathlons, century rides, triathlons and even the most family-friendly of races, Mt Washington Valley's terrain, geography and esprit-de-corp have attracted competitors hoping to test their limits.

This means that Mt Washington Valley is home to a numerous athletic events during every season. Biking, hiking, cycling, running, skiing, ice climbing and even mud football are all here, luring athletes from beginner level to expert.

At last, both participants and spectators can access one easy location to find all the competitions and races scheduled to date. Simply go to www.CompeteMWV.com to find a list of biking, rock and ice climbing, hiking, running, and skiing competitions, plus a few more!

Don't see one of your events on the list? Please be sure to contact the Mt Washington Valley Chamber of Commerce so we can add your event to the list. Write to Visitor@MtWashingtonValley.org with all the important details of your event, and let them know that you'd like your event added to the CompeteMWV.com



www.CompeteMWV.com calendar.

To plan your next athletic vacation to Mt Washington Valley, or to get information about places to stay, dine and things to do when you attend one of the Valley's athletic events, go to www.MtWashingtonValley.org for complete planning resources. Additionally, please call 800-DO-SEE-NH (800-367-3364) to talk to a vacation concierge. For more information on visiting New Hampshire, go to www.VisitNH.gov.



Drive, Tour & Explore **MOUNT WASHINGTON**

Find adventure at every turn on the legendary Mt. Washington Auto Road

BOOK YOUR GUIDED TOUR ONLINE

SAVE

\$5

PER PERSON
24 hrs ahead

MtWashingtonAutoRoad.com

ELEVATE YOUR ADVENTURE

1 Mount Washington Auto Rd, Route 16, Gorham, NH
(603) 466-3988 • MtWashingtonAutoRoad.com

THIS CAR CLIMBED

MT. WASHINGTON

Win a basketful of prizes, including Kenny Chesney tickets

Raffle Benefits Friends of the Earth, Sea & Space Center

DOVER, NH--You could win a basketful of great prizes, including club seats to this summer's must-see Kenny Chesney concert, for the price of one twenty-five dollar raffle ticket! The Friends of the Earth, Sea & Space Center, a nonprofit group working to develop a state-of-the-art science center in Dover, NH is holding a raffle fundraiser featuring all kinds of great prizes. Topping the list are two tickets to Kenny Chesney's "Spread the Love" concert at Gillette Stadium in Foxborough, MA for August 27, 2016. The concert also features Miranda Lambert, Sam Hunt and Old Dominion and has already sold out. The seats being raffled are premium seating and will provide a phenomenal concert experience.

And there's more! The basket also includes a \$50 VISA gift card from Optima Bank & Trust, a round of golf with cart for four from Cocheco Country Club (a \$260 value) in Dover; TWO gift certificates for half-hour massages from Trinity Massage in Newington, a gift certificate from K9 Kaos (daycare, grooming, boarding, training) of Dover for \$50, \$100 worth of hair products from 210 Hair Salon of Portsmouth, a 20 percent off coupon from Aesthetic Lawn Care of Dover, homemade specialty vinegars from Mondanock Oil & Vinegar Company of Peterborough, homemade jam from Stonewall Kitchen, and Lindt Chocolates. What



more could you want?

How about a great chance to win! Tickets are just \$25 and only 200 tickets will be sold. The winner will be drawn when all tickets are sold and will win all prizes. Tickets can be

purchased from any board member (call 603-436-7778), or online at www.earthseaspacemuseum.org. Tickets purchased online do incur a small processing fee, which is shown on the order form. Tickets can also be purchased at several upcoming events benefiting the Friends--watch for us at Dos Amigos in Dover on May 25th, and watch our website and Facebook pages for additional event and inperson purchasing opportunities.

For more information about the Earth, Sea & Space Center visit www.earthseaspacemuseum.org or call (603) 742-0800.



"Nataya" Vintage Inspired Fashion & Unique Accessories

Enchanted Lace

A Specialty Boutique...



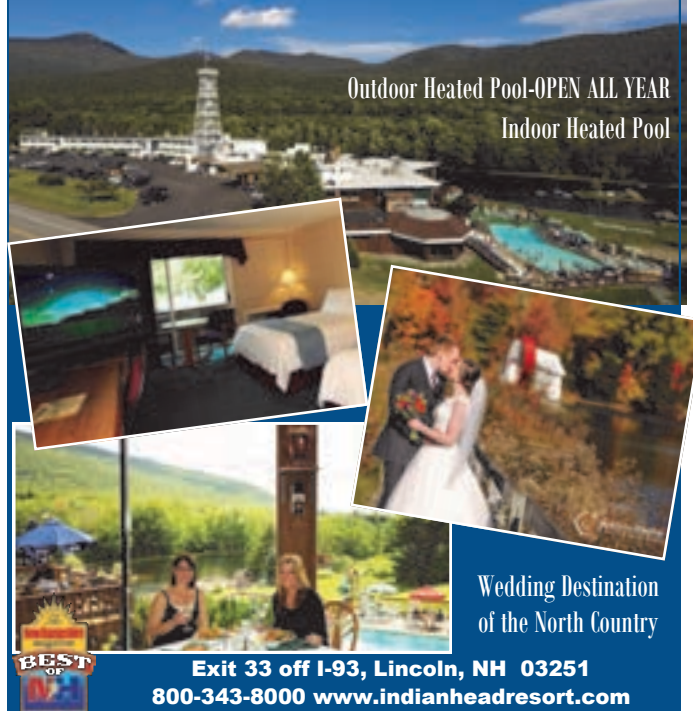
Celebrating 29 Years
(603) 673-5223
Open 7 Days

Salzburg Square
292 Route 101,
Amherst, NH 03031

www.enchantedlace.com

180 acres of Scenic Splendor in the Heart of New Hampshire's White Mountains

INDIAN HEAD RESORT
180 ACRES OF SCENIC SPLENDOR IN THE HEART OF NEW HAMPSHIRE'S WHITE MOUNTAINS



Outdoor Heated Pool-OPEN ALL YEAR
Indoor Heated Pool

Wedding Destination of the North Country



Exit 33 off I-93, Lincoln, NH 03251
800-343-8000 www.indianheadresort.com

Canterbury Shaker Village hosts 4th Annual Heifer Parade

Canterbury Shaker Village Hosts 4th Annual Heifer Parade with Food & Fiddle on May 7: Free admission event celebrates spring and the return of Brookford Farm cows with a parade, maypole dancing, food and outdoor barn dancing

CANTERBURY, NH: Canterbury Shaker Village will host the 4th Annual Heifer Parade with Food & Fiddle on Saturday, May 7, 2016 from 10:00 am to 3:00 pm. Cows from Brookford Farm will parade to the historic pastures at the Village at approximately 11:00 am. Admission is free.

Maypole dancing, food, outdoor barn dancing, and make-your-own head wreaths and May baskets will be available throughout the day. Self-guided exhibits at the Village will be open to attendees and guided tours on the hour will be available at 11:00 am and 1:00 pm for a special fee of \$10 per person.

Other upcoming events at Canterbury Shaker Village include Opening Day & Canterbury Shaker Village XCSK on Saturday, May 14 at 10:00 am; and Simply Shaker Dinner and Auction, the annual gathering benefiting Canterbury Shaker Village on Wednesday, June 22. Upcoming Shaker-inspired workshops include Holistic Orchard Workshop on May 21; The Shaker Dance Revival Project Summer Dance Intensive on June 22-24 and June 27-29; and Medicinal Plant Walk on June 11. To view the complete 2016 calendar of events and workshops visit



www.shakers.org.

About Canterbury Shaker Village
Canterbury Shaker Village is dedicated to preserving the 200-year Shaker legacy of innovative design, entrepreneurship and simple living by providing a place for learning, reflection, and renewal of the human spirit. Visitors are encouraged to rethink tradition by learning about the life, ideals, values, and history of the Canterbury Shakers. The National

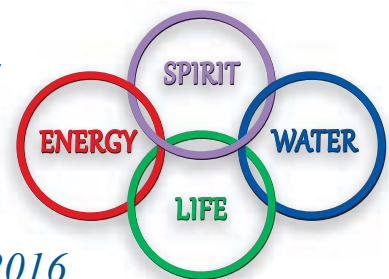
Historic Landmark includes 25 restored original and four reconstructed Shaker buildings, and 694 acres of forests, fields, gardens, nature trails, and mill ponds under permanent conservation easement. The Village cafe offers simple lunch fare and the Museum Store features unique gifts and wares handmade by regional artisans. Canterbury Shaker Village, located at 288 Shaker Road in Canterbury, New Hampshire, will be open daily from May 14-October 23.



Donna Eden & The Dowsters

are coming to Saratoga Springs, NY

**THE AMERICAN SOCIETY
OF DOWSTERS
CONVENTION/ EXPO**



Skidmore College June 15 - 20, 2016

COME ONE, COME ALL
Largest Dowsing & Metaphysical
gathering in the US

Over 40 speakers, 16 Workshops and 2 Dowsing Schools

Cutting-edge scientific and metaphysical topics on dowsing, water, earth energies, philosophy, sacred geometry, spiritual teachings, nutrition, subtle energy fields and much more!

Ceremonies, Music, Vending Area, Wellness Practitioners, Labyrinth, Social Gatherings, Experiential Fieldtrips and Tours of the Healing Mineral Springs

<http://dowers.org/convention/>



American Society of Dowsters, Inc. 802-684-3417 asd@dowers.org www.dowers.org



Pats Peak Mountain Bike Festival June 11 & 12, 2016

Henniker, NH, April 14, 2016 – PATS PEAK in Henniker, NH will host the 15th Annual PATS PEAK Mountain Bike Festival the weekend of June 11 & 12, 2016. The weekend is presented by PATS PEAK along with S&W Sports, USA Cycling, Root 66 Northeast XC Race Series and the Eastern States Cup New England Downhill USAC State Championship.

Bicycle riders from all over New England come to PATS PEAK to participate in this exhilarating mountain bike weekend. The Mountain Bike Festival features 24-Hour, 12-Hour, 6-Hour, X-Country Challenge and Downhill Thrill races. Riders will be competing for over \$4,000 in cash and prizes.

Riders for the 24/12/6 Hours of PATS PEAK may ride solo, in two person teams, in four person teams or in five person teams. The 24/12/6 Hours of PATS PEAK races kick off at 12:00pm on Saturday, June 11. This is an endurance competition held on a circuit course consisting of wooded trails, fields, unpaved roads, obstacles consisting of roots, rocks, streams, steep inclines and descents, testing a racer strength and technical ability.

The X-Country Challenge on Sunday, June 12 is part of the Northeast Root 66 XC Race Series, a series of cross-country mountain bike races held at different venues throughout New England. The series offers fun and competitive mountain bike racing with reasonable entry fees, timely results and series scoring. The 2016 Series is a made up of 13 cross-country mountain bike races and 2 marathon races held at different venues throughout New England between April and mid-September. All the races are well-established, and some even date back before the series began. For a listing of the Root 66 Series schedule go to www.root66raceseries.com. The X-Country Challenge has many categories from Beginner to Pro. The X-Country Challenge uses the same course as the 24/12/6 race. The X-Country Challenge race consists of a certain number of laps to complete and the winner is the one that completes it in the quickest time.

The bike course for the 24/12/6 Hours of PATS PEAK and the X-Country

Challenge will be open for riding sometime in May. There is no charge to pre-ride the course. All participants and everyone alike are encouraged to ride the course. Please practice common courtesy if a wedding ceremony or other activity is taking place in the Base Area.

The Eastern States Cup New England Downhill USAC NH State Championship racers take the chair lift up to the top of the mountain and race down the course one at a time against the clock for the quickest time to the bottom of the course. Each racers will take two runs - two different tracks total time wins. Bicycles used in the downhill have up to nine inches of suspension front and rear to help absorb the extreme terrain passing beneath them with speeds up to 40mph. The Downhill race starts at 11:30am on Sunday, June 12 with many age categories. The Downhill course is only available for pre-riding on Saturday, June 11 for paid entrants only. The Downhill race is part of the VITTORIA Eastern States Cup New England Downhill USAC Regional Championship Series. This series includes eight series races plus the series finals. This multi-championship series includes Pats Peak NH; Thunder Mountain, MA; Killington, VT; Mount Snow, VT; Attitash, NH; Sugarbush, VT; and Plattekill, NY (Finals). In addition to the New England Downhill USAC Regional Championship Series there is an Atlantic Downhill USAC Regional Championship Series. The ESC Downhill races provides high-level racing, multiple USAC Championships at great venues. For a listing of the ESC schedule, rules and more information go online to www.easternstatescup.com.

Other weekend events include a Kids Race on Saturday and Sunday. The Sled Pub will be open with food and beverage available.

Overnight camping at PATS PEAK is available. Camping and registration opens at 3pm on Friday, June 10. Family, friends, and non-riders are welcome. Whether you're a spectator or plan to race, you're sure to have a great time.

In order to continue to make this event a success, volunteers are needed to help in the Scoring Tent for the 24/12/6 Hours of PATS PEAK races, water stations ►



More than \$10,000 in Cash/Prizes
JacksonNH.com
Duck Races

Wildquack Duck River Festival - May 29th - 8 AM - 3 PM
Jackson Village Park, Jackson, NH - 603-383-9356

Mention IN NH and receive a special Rubber Duck from any of the Chamber Tables at the Duck Race valid May 29, 2016 only.

and in other positions. All volunteers will receive a food voucher, t-shirt, a lift ticket for skiing/riding at Pats Peak Ski Area. If you are interested or know someone who is interested in volunteering, please email lori@patspeak.com.

"We are excited to hosting the 15th Annual Mountain Bike Festival Weekend. We love it that riders from all over come to Pats Peak to compete in our endurance races, cross-country series races and downhill series races. We enjoy welcoming back riders every year along with those that join us for the first time", says Jim Wall, PATS PEAK Event Coordinator.

For more information go online to www.patspeak.com/bike.html or call PATS PEAK at 1-888-PATS PEAK (1-888-728-7732).

Online Registration is available through www.bikereg.com/pats-peak-mountain-bike-festival

PATS PEAK Mountain Bike Festival Weekend Schedule

(Subject to changes)

Friday, June 10

3pm: Camping opens for participants and guests

3pm-7pm: Registration: 24/12/6 Hours of PATS PEAK; ESC Downhill Race; X-Country Challenge

Saturday, June 11

7am-10am: Cafeteria Open with Full Breakfast Menu available for purchase.

8am-10am: Registration: 24/12/6 Hours of PATS PEAK; ESC Downhill Race; X-Country Challenge

9am-4pm: Lift Rides available for \$5 per ride

9am-4pm: ESC Downhill Thrill Practice

10am-3pm: Cafeteria Open with Lunch Menu available for purchase.

10:30am: 24/12/6 Hours Riders Meeting (mandatory)

11am-11pm: Sled Pub Open. Pub Fare available for purchase from 3pm-9pm.

12pm: 24/12/6 Hours Begins

1pm: Kids Race (Under 12 years old; Helmet mandatory)

6pm: 6 Hours Ends, Awards Following

8:30pm: Riders must start using lights

11pm-5am: Quiet Hours

Sunday, June 12

12am: 12 Hours Ends, Awards 9:30am-Sled Pub

5am: Riders are permitted to ride without lights at this point in the race.

7am-10am: Cafeteria Open with Full Breakfast Menu available for purchase.

7am-9am: Registration: ESC Downhill Thrill

7am-1:30pm: Registration: X-Country Challenge

9am: X-Country Challenge Cat 3 Race Begins; Awards Following-Sled Pub

9:30am: 12 Hours Awards-Sled Pub

9am-11am: ESC Downhill Thrill Practice

9am-4pm: Lift Rides available for \$5 per ride

10am-4pm: Cafeteria Open with Lunch Menu available for purchase.

11am-Close: Sled Pub Open

11am: Kids Race (Under 12 years old; Helmet mandatory)

11:15am: ESC Downhill Thrill Riders Meeting - At Summit (mandatory)

11:30am: ESC Downhill Thrill Race Begins (2 runs each, Best of 2), Awards

Following-Sled Pub

11:30am: X-Country Challenge Cat 2 and Cat 2 Single Speed Open Begins; Awards

Following-Sled Pub

12pm: 24 Hours Ends, Awards Following-Sled Pub

1:30pm: X-Country Challenge Pro/Cat 1 Open, Cat 1 Single Speed Open, Cat 1

Begins; Awards Following-Sled Pub

For additional information on the PATS PEAK Mountain Bike Festival, please visit

patspeak.com.

PATS PEAK is located in Henniker, NH, just twenty minutes from Concord, forty minutes from Manchester, and ninety minutes from Boston. The latest information, snow conditions, photos and events are available at www.patspeak.com or call 1-888-PATS PEAK (1-888-728-7732).



visit historic

STRAWBERRY BANKE MUSEUM

Explore four centuries of New England life in New Hampshire's oldest waterfront neighborhood

MAY - OCTOBER

Open 7 days a week, 10 am - 5 pm

NOVEMBER - DECEMBER

Open for guided tours and special events.

Please visit our online calendar for details.

Costumed Role-players • 40+ Historic Houses

Visitor's Center • Historic Gardens

The Fig Tree Kitchen • Special Holiday Events



Call 603.433.1100

for more info

14 Hancock Street,
Portsmouth, NH 03802
www.strawberrybanke.org

OLLI at Granite State College to host Mug and Muffin Social Event to celebrate Cinco de Mayo

OLLI (Osher Lifelong Learning Institute) at Granite State College in Manchester will host a "Mug and Muffin" social event in celebration of Cinco de Mayo on Wednesday, May 4, 2016 from 10:00 AM to 12 Noon at Granite State College, 195 McGregor Street, 3rd floor in Manchester. OLLI members and guests are all welcome to attend. This event is free.

In keeping with the spirit of the day, guests of Mexican heritage from Consuelo's Taqueria, dressed for the holiday, will not only provide the history and origin of Cinco de Mayo but will contribute to the



festive mood of the morning. This popular event will give OLLI members an opportunity to relax and socialize outside of the usual classroom setting. Remember OLLI goes "green" for the morning so please bring your own mug for your coffee, tea, or other beverage. There will be a variety of breakfast-type refreshments including Mexican ones to enjoy, too. Those who know some Spanish should brush

up on their skills to lead in some fun activities of the morning. Additionally, everyone will get to utilize some limited craft skills. Attendees are encouraged to wear a costume if desired or at least to

wear bright colored clothing for the day in celebration of this Mexican holiday.

OLLI is a member organization that provides educational, social and volunteer opportunities for adults over 50. OLLI holds classes in four locations across the state, the greater Manchester, Concord, Conway and Seacoast regions. Visit: www.granite.edu

The Four Corners Brick House
IN HISTORIC GILMANTON, NEW HAMPSHIRE
Antiques, Reproductions, and Quality Consignment
SPRING OPEN HOUSE MAY 13, 14 & 15
OPEN MONDAY, MEMORIAL DAY
Hours: Closed Mon. Tues.-Sat. 10-5; Sun. 12-4
fourcornersbrickhouse.com
525 Province Rd.
Gilmanton, NH 03237
267-6949

Cheshire Children's Museum
The Colony Mill Marketplace
Keene, New Hampshire

Imagine a world of possibilities

Come play
Tuesday through
Saturday from
10 - 5 or
Sunday 12 - 4
(Closed Monday)

--- Imagine a world of possibilities ---

1-603-903-1800
www.cheshirechildrensmuseum.org

Hodgepodge Yarns & Fibers

LIKE TO KNIT?

COME IN AND BROWSE!

59 Belknap Avenue, Newport, NH (603) 863-1470
Mon.-Fri. 9:30-5:00; Sat. 9:30-4:00; Closed Wed. • Mastercard/Visa

Discover camping in New Hampshire at Encore resorts!

- Transient, monthly, seasonal and annual sites available
- Close to Salisbury and Hampton Beach
- Exciting activities & events
- Resort style amenities
- Rentals



Sandy Beach RV Resort, Contoocook



Pine Acres RV Resort, Raymond



Tuxbury Pond, South Hampton

encore *Resorts*
RVontheGo.com
855-387-2667

EVINRUDE OUTBOARDS
E-TEC

• BOATS • MOTORS • ACCESSORIES • SUPPLIES

HAGGETT'S MARINE, INC.
112 Airport Rd., Concord, NH • 603.224.0171 • www.haggettsmarine.com

YANKEE FARMER'S MARKET
Buffalo Farm & Store

Great Meat Package Deals

Buffalo: Burger, Steaks & Ribs
Grass Fed Beef: Ground and Burgers
Pasture-Raised Pork: 1/4 & 1/2
Compost Available! Great for your garden!

Specializing in hormone-free & antibiotic-free meats.
BUFFALO * GRASS FED BEEF * PASTURED PORK * CHICKEN * LAMB * VENISON * ELK

www.yankeefarmersmarket.com

Deep Sea: Special programs at the Seacoast Science Center

(Rye, NH) Discover how scientists are exploring the deep sea during the months of April and May through special exhibits, hands-on learning activities and programs at the Seacoast Science Center, free with admission.

Enjoy hands-on learning activities anytime, and special programs at 2:30pm on weekdays and 11:00am and 2:30pm on weekends.

In celebration of Seacoast Repertory Theater's April 15-May 15 production of *Titanic the Musical*, the Center will be raffling off tickets to the musical, and you can enter to win a Seacoast Science Center family membership at The Rep when you go to see the show. Also, if you go so see the show, save your *Titanic the Musical* ticket stub and present it at the Center to receive one free child admission per family, now through May 31, 2016.

According to Seacoast Science Center Marketing Director Karen Provazza, "The serendipitous timing of our program theme and The Rep's production about the infamous *Titanic* presents the perfect opportunity for families to learn more about the discovery of the wreck and how scientists are exploring the deep sea."



"The ocean is earth's last frontier, with over 90% of it still unexplored. We know that it holds resources yet to be discovered and that it is changing more rapidly than in recent history. As technology advances, we are able to dive deeper and learn more about our ocean."

"Ocean health is critical for all life on Earth and the more we understand this dynamic environment and how it impacts our daily lives, the better positioned we are to preserve and protect it for future generations."

A different program theme will be featured every day of the week at the Seacoast Science Center:

Mondays, discover what lies on some of the deepest parts of the ocean; Tuesdays, learn about side scan sonar technology; Wednesdays, explore the wreck of the *Titanic*; Thursdays, learn about local shipwrecks; Fridays, discover creatures of the deep; Saturdays, get hands-on with ROVs; Sundays, become an underwater archaeologist. Full program descriptions can be found at www.seacoastsciencecenter.org.

A Klein Marine Systems high definition, digital side scan sonar imaging device is on exhibit, where you can also search for the wreck

of the *Empire Knight* on an interactive display. Learn about the defining features of the ocean floor, how ROVs communicate with scientists on the surface, and the world's first underwater habitat EDALHab, which was built right here in New Hampshire. Discover the advances in hard hat diving, search from hidden treasures from a sunken ship and more.

The Seacoast Science Center, located within Odiorne Point State Park in Rye, NH, is open daily from 10:00 a.m. to 5:00 p.m. For more information call 603-436-8043 or visit www.seacoastsciencecenter.org.



Taste of
MONADNOCK & BEYOND

FOOD & WINE



FESTIVAL 2016

Join us for a "Tasting Dinner."

to benefit
Shelter From The Storm
a transitional homeless shelter . . .



- Beer, Food & Wine
- Cooking Demos • Pig Roast •
- Local Artwork • Live Music
- Raffles/Door Prizes •
- Fireworks by Atlas 8:45 •
- Over 45 vendors •

Sunday, May 15
5 pm to 8:30 pm

on the entire grounds of
Woodbound Inn, Rindge, NH

Advance Tickets: \$40
Door: \$45

Tickets may be purchased by calling
603-532-8222
or online at
www.shelterfromthestormnh.org
at Upcoming Events

Chris Isaak: First Comes the Night Tour at Lebanon Opera House

Chris Isaak will perform at Lebanon Opera House on Saturday, May 7, 2016. Seats for the 7:30 pm show are \$98.50, \$78.50 and \$59.50. Tickets can be purchased at Lebanon Opera House Box Office in person or via phone 603-448-0400. Tickets can also be purchased online at www.lebanonoperahouse.org.

Chris Isaak, gifted singer, songwriter and bandleader, has produced a bumper crop of strong and intriguing songs in his latest album, *First Comes the Night*. "There was no mission for this album other than to follow the songs," Chris Isaak explains. "My last release was *Beyond The Sun* -- my tribute to Sun Records-- with a lot of covers. This time around, I had a lot of new material that I was thrilled to record.

First Comes the Night fittingly represents a number of firsts for Chris Isaak, who recently signed on to become a judge on *The X Factor Australia*. "I love Australia, and if you're going to look for stars, I can't think of a more beautiful place on Earth to start looking."

This is also the first time that Isaak has written and recorded extensively in Nashville, Tennessee, a change in location he explored partly upon the suggestion of his friend Stevie Nicks. "Somehow even I had some misconceptions about Nashville," confesses



Isaak. "You'd think a music guy who's been in the business as long as I have would know better. I'm a huge fan of country music since I grew up listening to Hank Williams, Ernest Tubb and Buck Owens, and I know my country history well, but even I somehow forgot Nashville is --- and always been -- about more than just country."

"I worked on the album in Los Angeles along with Mark Needham who's done great work with me over the years. Then I took some time to write and record in Nashville. I had the misconception that a producer in Nashville would be bringing in banjos and asking me what songs I had that were pure country.

The truth is that great producers are great producers, and Nashville is so full of brilliantly talented people."

Similarly, in the Nashville tradition, Isaak also did more co-writing than usual, including working with some of the town's talented songwriters. Before long, Isaak fell in love with the tremendous musical energy of Nashville. "It's Music City -- not just country city," Isaak says. "At first you think of all the classic country artists, at least I do, but then you realize how many great records Roy Orbison, Elvis Presley and the Everly Brothers made there too. Great Rock & Roll came out of Nashville and great Soul music too.

Yet for all this exciting collaboration, *First Comes The Night* is very much a great Chris Isaak album that features him at his best. For all the firsts, there's a strong through-line that continues from Isaak's earlier triumphs like *Silvertone* (1985), *Chris Isaak* (1986), *Heart Shaped World* (1989), *San Francisco Days* (1993), *Forever Blue* (1995) and *Always Got Tonight* (2002). "I guess you can make a drink with many ingredients, but if one is very strong, that's what you taste," says Isaak with a laugh. "For better or worse, I have a tendency to dominate because I have a big voice and some twisted ideas."

Explore & Enjoy our Lakes & Rivers!
Fishing, Swimming, or just Relaxing!

Rent a Pontoon
 on the Connecticut River!
 Other possibilities too!
 Powered by Mercury 4-strokes!
 Canoes & Kayaks
 Ski Boats
 Ski, Tube, have fun!



Reservations are required

FAIRLEE MARINE
 Route 5, Exit 15 off I-91 Fairlee, VT
www.boatingvermont.com • (802) 333-9745

Ask about our Dream Flights

Aerial Tours starting @ \$69 per person

SEACOAST LIGHTHOUSE AERIAL TOURS

603-373-8743 • www.seacoasthelos.com
 44 Durham Street • Portsmouth, NH



New England Fabrics

Worth the Visit!
 If you like Fabrics... You'll love our Store!

- Quilting • Fashion • Yarn & Knitting
- Sewing Machines • Home Decor
- Blinds • Curtains • Upholstery

Central New England's Largest Fabric Center.
 New England Fabrics & Decorating Center
 Open Mon-Sat 9:30AM-5:30PM
 Open Late on Fridays 'til 8PM

newenglandfabrics.com
55 Ralston Street, Keene, NH • 603-352-8683



ANTIQUES ON ELM
 A GROUP SHOP

OPEN 7 DAYS A WEEK
 Mon, Tues, Wed & Fri
 10-6pm; Thurs 10-7pm;
 Sat & Sun 10-5pm

Free parking along the side of our building

321 Elm Street • Manchester, NH
 (603) 606-1736
AntiquesOnElm@comcast.net

[Follow us on Facebook](https://www.facebook.com/AntiquesOnElm)
 Antiques on Elm

www.AntiquesOnElmManchester.com



Hiking Season is here, buy your Hike Safe Card

CONCORD, N.H. -- As you make plans to get outside to hike, bike, kayak or climb, be sure you have your 2016 Hike Safe card. Purchase the card online at www.nhfishandgame.com/HikeSafe.aspx to support Fish and Game search and rescue efforts and be exempt from liability for repaying search and rescue costs in New Hampshire (unless caused by reckless or intentional behavior).

Voluntary Hike Safe Cards are \$25 for an individual, or \$35 for a family (parents and minor children), and are good through the end of the calendar year.

"Whatever outdoor activity you enjoy -- hiking, biking, paddling, cross country skiing, or walking the nature trails in your town, the Hike Safe Card is your back-up plan for the great outdoors," said Fish and Game Law Enforcement Chief Kevin Jordan. "Buying a card is a great way to help support Fish and Game's search and rescue activities."

Funds raised through sale of the hike safe cards go to Fish and Game's Search and Rescue Fund. To date, the Department has sold 3,698 cards, bringing in nearly \$100,000 during 2015-2016. In 2015, Fish and Game conducted 207 search and rescue missions, up 40 missions from 2014. Under state law, the Fish and Game Department can pursue reimbursement for rescue costs if the person rescued is deemed to have



Vonshots / dreamstime

acted negligently.

Individuals who possess a valid New Hampshire hunting or fishing license, or a current registration for an off-highway recreational vehicle, snowmobile or

boat, are already exempt from repaying rescue costs.

Learn more about New Hampshire's voluntary Hike Safe Card and see Frequently Asked Questions about the card at www.wildnh.com/safe.

MT. KEARSARGE INDIAN MUSEUM

One Circle, 1000 Stories. Experience It!

Open for Our 25th Season

May 1-October 31

Monday-Saturday 10am-5pm, Sunday Noon-5pm

*Glooscap/Kluskap
of the Wabanaki*

Paintings by Maliseet artist Dozay
In the Contemporary Art Gallery
through September



18 Highlawn Rd, Warner, NH 603-456-2600, IndianMuseum.org



Beginning Fly-Fishing class offered in Concord, NH May 14

An upcoming workshop offers a chance to learn about the traditional sport of fly-fishing. The New Hampshire Fish and Game Department's "Let's Go Fishing" Program is hosting "Fly-Fishing A-Z" on Saturday, May 14, from 8:30 a.m. to 4:30 p.m. at Fish and Game Headquarters in Concord and Sunday, May 15, from 8:30 a.m. to 12:30 p.m. There is no charge for the class.

Registration opens on Monday, April 11. To sign up, you must print out and return a registration form, which is available on the Fish and Game website at www.fishnh.com/fishing/documents/lgf-registration.pdf. Registration forms can also be obtained by calling Lisa Collins at (603) 271-3212 or emailing aquatic-ed@wildlife.nh.gov.

Registration is on a first-come, first-served basis and limited to 25 participants. Registration forms will only be accepted via postal mail and must be received by Monday, May 2, to reserve your spot in the workshop. You will be notified via e-mail (or regular mail) if you are registered or have been placed on the waiting list.

The class is open to anyone age 13 and over, however those 16 and under must be accompanied by an adult.

Designed primarily for first-time fly-anglers, the workshop will cover the basics of equipment, fly casting, stream ecology, knot tying, safety and



how to find those "hot spots" along New Hampshire's rivers and lakes. The highlight of the two days will be Sunday, when you'll pull on your waders and head out to a local fishing hole to put your newly learned skills to the test! Participants should bring their own or borrowed equipment if they can. Rods are available for use; when you register, please let Fish and Game know if you will need to borrow their equipment.

Over the past ten years, the Fish and Game

Department's "Let's Go Fishing" program has taught thousands of children and adults to be safe, ethical and successful anglers. The program is federally funded through the Sport Fish Restoration Program.

The New Hampshire Fish and Game Department works to conserve, manage and protect the state's fish and wildlife and their habitats, as well as providing the public with opportunities to use and appreciate these resources.

DUNCKLEE

Timberframe and Boat Works LLC

Duncklee Timberframe and Boatworks provides custom built structures and small boat building & restoration.



www.dunckleetimberframeandboatworks.com
603-494-0285 ChrisDuncklee@yahoo.com



• *Located in New Hampshire* •

All our projects are assembled with hand selected wood, carefully hand crafted using family owned, antique tools, and built with strict attention to detail.



Door's Guitarist Robby Krieger in Plymouth, NH May 6

Plymouth, NH. The Flying Monkey presents Robby Krieger on Friday, May 6th at 7:30pm. Robby is the founding guitarist and co-songwriter of the iconic rock band The Doors. Tickets for this concert start at \$44.

Guitarist Robby Krieger of The Doors is rock history in the flesh. Formed in 1965, The Doors weren't only a successful and popular band in the day, but groundbreaking leaders of a musical movement, and counterculture heroes. Jim Morrison's use of poetry, and the band's dark and devious music underneath it, were an ideal combination. The group was inducted into the Rock & Roll Hall of Fame in 1993.

Now 69, Krieger, had a classical music background (he played flamenco guitar on The Doors' "Spanish Caravan") before switching to electric. Not only did he play lead guitar, he wrote the band's signature song, "Light My Fire," among a handful of other hits.

The band had an enormous impact on rock music, but Morrison passed away in 1971, and the band threw in the towel in 1973. Their legacy is still felt strongly today.


Krieger says: "In The Doors we have both musicians and poets, and both know of each other's art, so we can effect a synthesis. In the case of Tim Buckley or Dylan you have one man's ideas. Most groups today aren't groups. In a true group



all the members create the arrangements among themselves."

Now, Krieger carries on with an all-star band performing a show billed as an evening of The Doors' greatest hits.

Tickets to see The Robby Krieger Band are \$44, and \$49 for premier seating. For more information on upcoming shows or to purchase tickets call the box office at 603-536-2551 or go online at www.flyingmonkeyNH.com.



More than a museum –
a chance to rethink tradition


Learn, Reflect, Renew

A visit to Canterbury Shaker Village will renew your spirit and linger in your memory long after you return home. This National Historic Landmark offers an opportunity to learn about the Shakers' 200-year legacy of innovation, entrepreneurship and simple living and reflect on how these traditions connect with your own life.

The historic Village includes:

- 25 original and four reconstructed Shaker buildings
- 694 acres of fields, gardens, forest, mill ponds and trails
- Only intact first generation Shaker Meeting House (1792) and Dwelling House (1793) in original locations
- Guided tours and self-guided exhibits
- Demonstrations daily
- Museum Store filled with simple gifts of artisan quality
- Lunch available at Shaker Box Lunch & Farm Stand

Open daily May 14-October 23 • Monthly Special Events



CANTERBURY SHAKER VILLAGE

288 Shaker Road • Canterbury, NH 03224 • 603-783-9511 • www.shakers.org

IN New Hampshire

246 W. Main St., PO Box 1190, Hillsborough, NH ♦ 603-464-3388
E-mail: granitequill@mcttelecom.com ♦ www.granitequill.com

Your Guide to What's Happening
in the Granite State.

25,000 copies distributed monthly at these New Hampshire State rest areas:

Canterbury	Hooksett South	North Conway	Seabrook	Sutton
Colebrook	Lebanon	Salem	Shelburne	Manchester-Boston
Hooksett North	Littleton	Sanbornton	Springfield	Regional Airport

Available at several locations in the following towns:

ALBANY
ALTON
ALTON BAY
ALLENSTOWN
AMHERST
ANDOVER
ANTRIM
ASHLAND
ATKINSON
AUBURN
BARTLETT
BEDFORD
BELMONT
BENNINGTON
BERLIN
BOSCAWEN
BOW
BRADFORD
BRENTWOOD
BRETTON WOODS
BRISTOL
BROOKLINE
CAMPTON
CANDIA
CENTER HARBOR
CHICHESTER
CLAREMONT
CONCORD
CONTOOCOOK
DERRY
DOVER
DUNBARTON
DURHAM
ELKINS
ENFIELD
EPPING
EPSOM
EXETER

FARMINGTON
FRANCESTOWN
FRANCONIA
FRANKLIN
GEORGES MILLS
GILFORD
GOFFSTOWN
GORHAM
GOSHEN
GRANTHAM
GREENFIELD
GREENLAND
GUILD
HAMPSTEAD
HAMPTON
HAMPTON BEACH
HAMPTON FALLS
HANCOCK
HANOVER
HAVERHILL
HENNIKER
HILLSBOROUGH
HOLDERNESS
HOLLIS
HOPKINTON
HOOKSETT
HUDSON
INTERVALE
JACKSON
JAFFREY
KEENE
KENSINGTON
KINGSTON
LACONIA
LAKEPORT
LANCASTER
LEBANON
LEE

LINCOLN
LITCHFIELD
LITTLETON
LONDONDERRY
LOUDON
MANCHESTER
MEREDITH
MERRIMACK
MILFORD
MOULTONBORO
NASHUA
NEW BOSTON
NEW CASTLE
NEW HAMPTON
NEW LONDON
NEWMARKET
NEWPORT
NEWBURY
NEWINGTON
NORTH CONWAY
NORTH HAMPTON
NORTHWOOD
OSSISPEE
PELHAM
PETERBOROUGH
PITTSFIELD
PLAISTOW
PLYMOUTH
PORTSMOUTH
RANDOLPH
RAYMOND
RINDGE
ROCHESTER
RYE
SALEM
SALISBURY
SEABROOK
SOMERSWORTH

STRATHAM
SUNAPEE
SUTTON
SWANZEY
TAMWORTH
THORNTON
TILTON
TWIN MT.
WAKEFIELD
WALPOLE
WARNER
WATERVILLE VALLEY
WEARE
WEIRS BEACH
WEST LEBANON
WHITEFIELD
WILTON
WINDHAM
WINNISQUAM
WOLFEBORO
WOODSTOCK

AMESBURY, MA
NEWBURYPORT, MA

ARUNDEL, ME
BIDDEFORD, ME
CAPE NEDDICK, ME
KENNEBUNK, ME
KENNEBUNKPORT, ME
KITTERY, ME
OGUNQUIT, ME
SANFORD, ME
WELLS, ME
YORK, ME

Calendar of Events

Baby Animals at Strawberry Banke

May 1, 2016 10:00 AM
 Adults \$15, children 5-17 \$10. Family \$40
 Strawberry Banke Museum
 14 Hancock Street, Portsmouth, NH 03801
 Phone: 603-433-1100

Meet the spring's new arrivals under the tent on Puddle Dock: lambs, kids, piglets, bunnies, chicks and more. With information about raising and caring for heirloom breeds of animals like those brought to the New World in the early days of settlement.

Seacoast Cat Club Annual Cat Show

May 1, 2016 9:30 AM
 Admission: \$6.00 Adults, \$4.00 Children 4-12 and Seniors. Everett Arena
 15 Loudon Road, Concord, NH 03301
 Phone: 978-531-2158
 April 20: 9:30-4:30 May 3: 8:30-3:30 pm Pedigreed & Household Pet Cat Competition (Bengal Cats will be at our show this year!), Cat Agility, Pet Me Cats, Breed Presentation, Face Painting, Kids

Activities, Pet Supplies, food concession, raffle, used book sale, Spectator's Choice Award Voting, Stuffed Animal Contest (Sun. 11:30 am), Coupon & details at <http://www.seacoastcatclub.org>

Bear Brook Classic - Kendra Cup East #2

May 7, 2016 Registration starting at \$20.00. Bear Brook State Park
 61 Deerfield Road, Allenstown, NH 03275
 State 9 Racing, RideBiker Alliance and ROOT 66 are thrilled to bring a new venue to the mountain bike racing roster for 2016. This race will be the second stop for the Kenda Cup East circuit. Bear Brook State Park, in Allenstown NH, offers a wide variety of trails for us to design a seriously rad course. Fast, flowing, and technical are these trails. The course will be approximately 8 miles long. A CYCLOCROSS ENDURANCE RACE is also going to be part of the event. This is a new category of cx/gravel racing that includes fire roads, smooth single track, hills and distance longer than your typical cross race. Come see what this new race

discipline is all about! Recommended tire pressure is 40-55 for tubes and 30-45 if tubeless. You will not be disappointed in the fun and excitement this race will bring. There are over 30 miles of trails to enjoy in this beautiful state park. The park can also be linked with FOMBA, in Manchester, and other networks through snowmobile trails and endless double track. If you haven't yet, the BB Classic will get you coming back to enjoy the rest of the trails. After race refreshments will be available by a local food truck, and tasty beer provider.

Free Comic Book Day

May 7, 2016 10:00 AM
 Free admission. Free parking
 37 North Main Street, Rochester, NH
 Phone: 603-330-3208
 Dress up as your favorite comic character and visit downtown Rochester to receive a scavenger hunt card to lead you to local businesses and a free comic. Exhibition Hall with artists, vendors, demonstrators and more at the Knight of Columbus Hall. Presented by Jetpack Comics and Rochester Main Street.

7th Annual Mothers' Day Weekend Craft Festival

May 7, 2016 10:00 AM Free Event
 4 Lincoln Ave., Hampton Falls, NH 03844
 Phone: 603-332-2616

The scenic Town Common in Hampton Falls, New Hampshire will come alive with color, flavor and music for the 7th Annual Mother's Day Weekend Craft Festival on Saturday, May 7 and Sunday, May 8, 2016. Over 75 Juried craftspeople from all over New England will display and sell their American made works including stained glass, original watercolors, photography, pottery, carved wildlife, folk art, hand crafted soaps, country wood, quilts, doll clothes, fine jewelry, floral design and more. Come and sample the culinary delights of herbal dips, kettle corn, maple, pickles, jams, jellies, lemonade, homemade fudge, oils, sauces and more. Live musical entertainment on the bandstand each day. The Fair is held rain or shine, handicap accessible and admission is free. Hampton Falls Town Common is located directly on Route 1 in the lovely and picturesque village of Hampton Falls, NH. This event is a fundraiser for the Hampton Falls Recreation Commission with funds raised to maintain and improve the commons. Directions: From Route 95 take Exit 1 onto Route 1 North. Festival

KAYAK, CANOE & STAND UP PADDLE BOARD DEMO DAY

On the Contoocook River

Over 200 Kayaks, Canoes and Stand Up Paddle Boards to Demo

Sun., May 22nd, 2016 • 10:00 AM to 4:00 PM

New Hampshire's largest on water Canoe & Kayak Demo & Sale



Catch the Fever!

Demo Day Specials on Kayaks and Accessories

Paddlers Wanted

- Feelfree Kayaks • Stellar Kayaks
- Native Watercraft Kayaks • Liquidlogic Kayaks
- Jackson Kayaks • Hurricane Kayaks
- P and H • Dagger Kayak • Perception Kayak
- Wilderness Systems Kayak • Necky Kayak
- Eddyline Kayak • Current Designs Kayak
- Lincoln Canoe & Kayak • Bell Canoe
- We•No•Nah Canoe • Mad River Canoe
- Old Town Canoe • Old Town Kayak
- Ocean Kayak

Stand Up Paddle Boards by Pau Hana, C4 Waterman, BIC, Boardworks & Riviera

Location: Contoocook River Canoe Co. • 603-753-9804
 9 Horse Hill Road • Concord, NH • contoocookcanoe.com

Directions: Rt. 93N or S to Exit 15W. At 2nd set of lights, take a right onto Rt. 3 North, drive 3 1/2 miles and take a left onto Bog Road. Drive 2 1/2 miles to intersection, go straight through over river. First building on left.



Bug Baffler®

The Essential Bug Protection



Mosquito/Blackfly Barrier

CONCERNED ABOUT BUG BITES AND THE DISEASES THEY CAUSE?

Protective clothing for all outdoor activities:

- Gardening
- Beekeeping
- Camping
- Yard Work
- Walking
- Surveying
- Landscaping
- Bird Watching
- Mowing
- Hiking
- Fishing
- Hunting
- Traveling

UV Protection Now Available



email: sales@bugbaffler.com to order call 800-662-8411

"It's like working in your own screen house!"

download 1 page brochure or secure on-line ordering

www.bugbaffler.com

wholesale inquiries invited



Calendar of Events

Hours are Saturday from 10am to 5pm and Sunday from 10am to 4pm. For more information call 603-332-2616 or visit us at www.castleberryfairs.com Food sales benefit Hampton Falls Fire Department.

Mother's Day Brunch Cruise on M/S Mount Washington

May 8, 2016 10:00 AM. Adults \$ 44, child \$ 22, age 4 and under free. M/S Mount Washington, 211 Lakeside Ave., Weirs Beach, NH 03246. Phone: 603-366-5531 Treat mom to a cruise and brunch on beautiful Lake Winnepesaukee on her special day. Choose between the 10 Am or the 2 Pm cruise from Weirs Beach. Price includes brunch. Purchase your ticket on line or call early as these cruises usually sell out.

Guided Gallery Tour

May 14, 2016 2:00 PM \$7 per person over the age of 18. Children 18 and under are Free. Members are Free. 30 Park Street, Concord, NH 03301 Phone: 603-856-0604

Enjoy a guided tour of the New Hampshire Historical Society's historic Park Street building and exhibitions led by a member of the Society's education or volunteer docent staff. Find out more about New Hampshire's "Temple of History" and hear stories about the objects on display that make their history come alive. From a 500-year-old dugout canoe to a 1972 Ski-doo, the exhibitions on display at the New Hampshire Historical Society show you things you just can't see anywhere else. Guided gallery tours are 45 minutes long and are appropriate for visitors of all ages. The tour is included in the price of paid admission for adult and family audiences. Reservations are not accepted. Availability is on a first-come-first-served basis, and tours are capped at 12 people. To schedule a guided tour for an adult group of 12 or more people, see our group tours page or contact Director of Education and Public Programs Elizabeth Dubrulle at 603-856-0604 or edubrulle@nhhistory.org. Youth and school groups of any size must schedule a guided visit in advance.

Kites Against Cancer

May 15, 2016 11:00 AM, Free; Kites available for purchase: 1 for \$8/2 for \$15 160 Ocean Boulevard, Hampton, NH Phone: 603-580-6668 Kites will fill the sky as a sign of hope

and support for those affected by cancer during Exeter Hospital's 8th annual Kites Against Cancer event to be held Sunday, May 15, 2016 (rain date: Sunday, May 22) from 11am to 3pm at Hampton Beach (near the Oceanfront Pavilion). This uplifting fun family event will include kite flying and decorating, face painting, raffles, refreshments, music provided by Z107 and more! Warm-up with Zumba® on the beach at 11:00 am. 100% of event proceeds benefit The Beyond the Rainbow Fund at Exeter Hospital, a fund providing financial assistance and support to patients in need at Exeter Hospital's Center for Cancer Care. Special kites will be available for purchase at the event, as well as at the following Seacoast locations beginning mid-April. Kites are one for \$8/2 for \$15*. • Me & Ollie's Cafes: Exeter, Greenland, Newington and Portsmouth • Stillwell's Ice Cream: Hampton, Exeter & Amesbury, MA • Churchill's Garden Center: Exeter • The Farm at Eastman's Corner: Kensington • Hannaford Supermarket: Exeter • Exeter Hospital Gift Shop Individuals are encouraged to decorate or personalize their kites in memory or in honor of a loved one. *Unable to join us? Purchase a virtual kite online and still be part of this special event. For additional information, visit www.exeterhospital.com/kitesagaincancer or call 580-6668.

Community Turkey Dinner

May 14, 2016 5:00 PM \$9 adults, \$5 children under 12 307 Epping Road, Exeter, NH 03833 Phone: 603-772-6625 The Exeter United Methodist Church is pleased to announce the return of our Turkey Dinners Our first dinner of the year will be on Saturday, February 13th – dinner will be served from 5-6:30 pm. We'll be serving roast turkey, mashed potatoes & gravy, cranberry sauce, vegetable, rolls and a variety of pies for dessert. Hot and cold refreshments will be provided. Plenty of free parking! Take-away meals are available.

Memorial Day Sidewalk Sale

May 27, 2016 9:00 AM Free 2 Common Court North Conway, NH Phone: 603-356-7031 Look for sidewalk sale at participating stores at Settlers Green and Settlers Crossing. Plus, visit Customer Service C13 for a free American flag while supplies last.

LIVING RUSTIC



SHOP NH'S LARGEST RUSTIC FURNITURE & MATTRESS GALLERY



– PLYMOUTH – 603-238-3250 – MEREDITH – 603-279-1333 – TILTON – 603-286-4500

742 Tenney Mtn. Hwy. Just west of Wal-Mart, in the former Sears building

Mill Falls Marketplace Across from the public docks, Rt. 3 & 25

67 East Main Street in the former Agway building

WWW.COZYCABINRUSTICS.COM OPEN DAILY 9AM-5PM • SUNDAYS 10AM-4PM



FARM WAY

Complete Outfitters for Man and Beast

Boot Hill : We can fit your feet and your lifestyle. Choose from over 20,000 pairs of boots and shoes in stock Always a good sale



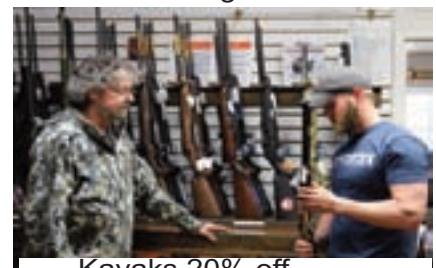
Tax free footwear and clothing



We've got what you've been hunting for



CRP recycled plastic furniture made in Canada



Kayaks 20% off



Windproof, maintenance free choose from 15 colors 20% off



Kid's Carhartt clothing sale



20% off recliners and sofas free delivery within 50 miles



Riding helmets starting at \$29.95



286 Waits River Road Bradford, Vt 05033 800-222-9316 local 802-222-9316
Monday - Saturday 8:30-5:30 Friday 8:30-8:00 PM closed Sundays

NOW A PROUD DEALER OF THE WORLD'S NUMBER 1 SELLING TRACTOR, MAHINDRA

Model:
1538 SHUTTLE



Model: 2555



Model: eMAX 22



KNOXLAND EQUIPMENT

603-746-5260

25 Old Warner Lane

Warner, NH 03278

www.knoxland.com

Mahindra

Rise.