

IN New Hampshire

JULY 2016

Your Guide to What's Happening in the Granite State



EGWSS
Presorted Standard
U.S. POSTAGE
Permit #130
Portsmouth, NH
Postal Customer
PAID

Photo by
Dan Houde

FREE See us online at
www.granitequill.com

IN New Hampshire

Your Guide to what's happening in the Granite State!

Leigh Bosse: Publisher

Joyce Bosse: Editor

Christi Macomber:
Advertising Design

Gail Stratos: Publications
Design & Layout, Advertising
Design, Production, Website

Deborah Belanger:
Account Representative

Mary Yuryan:
Account Representative

Jim Walsh:
Account Representative

Also from The Granite Quill:
The Messenger

In New Hampshire
*A guide to what's happening
in the Granite State*

The HomeFront
*A guide for New Hampshire
homeowners & home seekers*

Granite Quill Publishers
246 West Main St.,
Hillsborough, NH 03244
Phone: 603-464-3388
Fax: 603-464-4106
granitequill@mcttelecom.com

**To advertise in next
month's issue:**
Call Deborah at
800-281-2859



Family weekend at Portsmouth Harbor Lighthouse July 2 & 3

Join Friends of Portsmouth Harbor Lighthouses, a chapter of the American Lighthouse Foundation, for the fourth annual Family Weekend at Portsmouth Harbor Lighthouse. This year's event is July 2 and 3, from 1:00 to 5:00 p.m. on both days.

Here's what's in store:

- Tours of Portsmouth Harbor Lighthouse from 1:00 to 5:00 p.m. on both Saturday and Sunday. (Please note: Children must be 42 inches tall to climb to the top.)

- At 2:00 p.m. on Saturday, July 2, there will be a talk presented by a representative of the Center for Wildlife in York, Maine, with some local animal ambassadors. Learn about summer wildlife adaptations!

- Starting at 2:00 p.m. on Sunday, July 3, enjoy live Irish and folk music, stories, and shenanigans with Shannachie.

- All afternoon on both Saturday and Sunday, the scalawags of the New England Brethren of Pirates will be on hand to entertain with games, swashbuckling, and humor. They'll have a special friend along -- a mermaid!

There is no charge to enter the grounds for these events. There is a suggested donation of \$4 for adults and \$2 for children (12 and under) to climb the lighthouse. Donations help cover the cost of events like this and also support the preservation of the lighthouse. Visit www.portsmouthharborlighthouse.org for more information.


**The Four Corners
Brick House**
IN HISTORIC GILMANTON, NEW HAMPSHIRE
**Antiques, Reproductions, and
Quality Consignment**
Hours: Closed July 4th
Closed Mon. Tues.-Sat. 10-5; Sun. 12-4
fourcornersbrickhouse.com
**525 Province Rd.
Gilmanton, NH 03237
267-6949**

Cheshire Children's Museum
The Colony Mill Marketplace
Keene, New Hampshire


Come play
Tuesday through
Saturday from
10 - 5 or
Sunday 12 - 4
(Closed Monday)

---- Imagine a world of possibilities ----
1-603-903-1800
www.cheshirechildrensmuseum.org

Strawbery Banke opens new Maritime Portsmouth History Exhibit

Strawbery Banke opens a new permanent exhibit, "Port of Portsmouth: War, Trade & Travel" on July 1, 2016 in the new Montrone Family Gallery in the newly-rehabilitated Thales Yeaton House. The exhibit focuses on the maritime history of Portsmouth and the Seacoast, showcasing a collection of models and paintings of ships built in Portsmouth, originally collected by Joseph Sawtelle in the hope of creating such an exhibit.

Eight beautifully-crafted models of Portsmouth-built sailing ships, collected by Sawtelle and donated to the museum by the Sawtelle Family, form the centerpiece of the exhibit to help trace the urgency of the American Revolution, the history of the Triangle Trade and the knife's edge balance of the Civil War. Paintings and historical artifacts once owned by ships' masters or builders add insight into life in maritime Portsmouth.

Ship models include the Raleigh (the centerpiece of the official Seal of the State of New Hampshire), Witch of the Wave, the Nightingale, and USS Kearsarge, giving life to the sheer size and complexity of life aboard ship. Stoneware jugs from 1700s and 1800s shops offer insight on how goods like rum and molasses finally made it to domestic homes after a long journey. Navigational tools include a Portsmouth-made quadrant, compass and sextant that set sail with Portsmouth ships, suggesting how



A scale model of the Raleigh on display at Strawbery Banke. The Raleigh was built in Portsmouth, one of the first 13 ships of the Continental Navy, and is depicted on the NH State Seal on the state flag.

captains guided their vessels around the world and home again. Personal items, including an engraved gold mourning ring owned by Captain James Hickey, reveal social customs. Paintings of Portsmouth-related ships, such as the Sarah Parker Rice, named by Gov. Ichabod Goodwin for his wife, echo themes found elsewhere throughout the museum.

"Port of Portsmouth" explores the breadth of maritime history associated with the seacoast of New Hampshire and its influence on the lives of those who lived in the neighborhood of Puddle Dock

now occupied by Strawbery Banke Museum. The waterfront neighborhood of Puddle Dock supplied the workforce to build commercial and naval vessels at boatyards on the Piscataqua River, (including America's oldest Navy Yard, the Portsmouth Naval Shipyard). Trade goods from around the world were brought to Portsmouth docks and Puddle Dock shops by the masters of sailing ships. Eighteenth century letters and captains' artifacts reveal the Portsmouth roots of the Continental Navy (including John Paul Jones residence in Portsmouth in 1782); while sailors' accounts from aboard the USS Kearsarge provided insight into the American Civil War.

"This important permanent exhibit at Strawbery Banke resides in new exhibition space in the Thales Yeaton House, created thanks to a major gift from the Montrone Family and grants from the Roger R. and Theresa S. Thompson Foundation Fund, The Davis Family Foundation and the Sawtelle Family, help Strawbery Banke Museum realize Joseph Sawtelle's vision of creating a maritime history exhibition permanently, and rightly, housed in Portsmouth," said Lawrence J. Yerdon, President and CEO of Strawbery Banke. The exhibit is included in regular admission to the museum and starting July 2 is open 7 days a week, 10 am to 5 pm. For more information, visit StrawberyBanke.org

JOCKEY
dressbarn
J. CREW
FACTORY



WHITE MOUNTAIN HWY, NORTH CONWAY, NH
settlersgreen.com



Explore Your Style!

Mt Washington Valley's event calendar

Here's are some of the best bets on the Mt Washington Valley events calendar for July, including three days in a row of July 4th festivities.

JULY 1-30: Where's Waldo? Find Waldo all over town in the month of July! The Find Waldo Local Campaign begins on Friday, July 1, at White Birch Books and other locally owned businesses across the nation. The event leads participants on a scavenger hunt through the Mt Washington Valley business district on a search for the elusive, red-and-white-stripe wearing picture book character. Spot Waldo at participating local businesses in July to be eligible for prizes throughout the month. The celebration then concludes with wrap-up party at White Birch Books at the end of the month. Participants will get a "bingo" card with all of the participating businesses listed and can get started from the bookstore on July 1st. Info: www.whitebirchbooks.com.

JULY 2: Fireworks in Jackson, Jackson Village & the surrounding communities come together to celebrate Independence Day. The skies light up approximately 9:00pm-ish. Info: www.jacksonnh.com/event/316/Fireworks.

JULY 3: July 4th Celebration in Fryeburg: Enjoy an old fashioned rural village celebration of Independence Day. Parade down Main Street, Fryeburg Village at 10:00am, then entertainment and fireworks at the Fryeburg Recreation Fields later in the day. Info: <http://www.fryeburgmaine.org> or www.fryeburgbusiness.com.

JULY 4: July 4th festivities in Conway & North Conway: It all starts with the Conway Village - Parade at 1:30pm. Then the fun moves to Schouler Park after 3:00pm where Motor Booty Affair will be on hand with live music and entertainment will also include an appearance by the Local Song of the Year winner, vendors supporting local non-profits in the area will be on hand too. There'll be food and of course fireworks (around 9:30pm). Info: www.mtwashingtonvalley.org.

JULY 12, 19, 26, AUGUST 2, 9, 16, 23: Movies on the Green at Settlers Green: Bring lawn chairs and a picnic or enjoy food available there. Each Tuesday a different family-oriented movie will be shown. Activities start at 6:00pm, movie shown at dusk. Free. Info: www.settlersgreen.com/events.

JULY 5, 12, 19, 26, AUGUST 2, 9, 16, 23: M&M Assurance Summer Bike Series: A weekly bike race series for all abilities and ages at Great Glen Trails. Every Tuesday for eight weeks racers compete on the long, short or mini courses between 3:30 and 7:00 p.m. Awards, raffle and fun potluck August 23rd. Adults: \$60, kids 17 and under: \$30 for the eight-week series. One time race: Adults \$12, kids \$7. Info: www.greatglentrails.com/events/summer-mountain-bike-series/.

JULY 9 & 30: Sunset Paddling on the Androscoggin: Paddling by sunset brings a whole



Photo by Dan Houde



Photo by Dan Houde

new environment of sights, sounds and wildlife to the largest river north of Mt. Washington. Guided sunset tours along a pristine stretch of the Androscoggin River are now offered four times this summer. \$80 pp prior paddling experience advised. Meet at Great Glen at 5:30pm. Info: greatglentrails.com/summer/sunset-tours-on-the-andro/

JULY 14: The Beach Boys Concert presented by Arts Jubilee: The season opener for the Arts Jubilee series, the goal of the show is to recreate the magic and essence of the 60s on the California beaches. Bring your own seating. The concert takes place at Cranmore Mountain Resort and starts at 6:00pm with the Mt Washington Valley Community Band opening and then a 7:00pm show. Adults: \$10, Seniors: \$8.00, kids (12 & under) free. Info www.mwvevents.com/

artsjubileeConcert1.html.

JULY 16: Full Moon Midnight Owl 15K Race: Walk or Run under the beauty of a full moon but be smart as an owl in predicting how long it will take for you to go 15K. Winners are the first five runners to cross the finish line AFTER MIDNIGHT. Estimate how long you will take to cover the Garmin measured 15K (9.3 mile) course and start when the countdown clock at the start line reads that time. NO WATCHES ALLOWED. This race course starts in North Conway Village's Schouler Park, proceeds to River and West Side Roads past the Saco River and through beautiful farmland to Conway Village and then the Ham Ice Arena. This events benefits Mount Washington Valley Skating Club. Info: www.racemenu.com.

JULY 21: Arts Jubilee presents "Old Friends: Remembering Simon & Garfunkel": Old Friends is a stunning recreation of Simon & Garfunkel's 1981 concert in Central Park - one of the largest and most beloved concerts of all time. Bring your own seating. The concert takes place at Cranmore Mountain Resort and starts at 6:00pm with an opener presented by Mountain Top Music and then a 7:00pm show. Adults: \$10, Seniors: \$8.00, kids (12 and under): free. Info: www.mwvevents.com/artsjubileeConcert2

JULY 22 – AUG 21: Ski Liquidators Annual Tent Sale: Now's the time to get great deals on last year's ►



Photo by Dan Houde

returns to North Conway with Percy for a fun-filled event the whole family will enjoy. In addition to a ride with Thomas, the ticket price includes unlimited motorcar rides, bouncy houses, mini-golf, a visit with Sir Topham Hatt, engine tours, and all the activities in Imagination Station, which is staffed and run by the Mt. Washington Valley Children's Museum. Tickets for ages 2 and up: \$20. Optional ride with Percy: \$10. www.ConwayScenic.com. • Visit www.VisitNH.gov.



Photo by Dan Houde

equipment. It takes place under the tent in North Conway Village, next to the North Conway Rec Center. Info: 603-356-6999.

JULY 28: Making Strides Against Breast Cancer KICKOFF: The American Cancer Society Making Strides Against Breast Cancer KICKOFF is happening at the

new Community Center. The public is welcome to join in as to kick off the next few months until the walk in October. Flatbread Pizza is generously donating food. Info: makingstrideswalk.org/northconwaynh.

JULY 29, 30, 31: Day Out with Thomas - Ready Set Go 2016 Tour: Everyone's favorite #1 engine



Osborne's Marine LLC

is expanding to meet all of your needs

We now offer heavy truck, equipment, and auto repair and a full service canvas shop.

Three Great Services – One Location!

(603) 763-0152

www.osbornesmarine.com

284 ROUTE 11, SUNAPEE, NH





NEW HAMPSHIRE'S WHITE MOUNTAINS

SOME PLACES HAVE ALL THE FUN



Endless Adventure
and
Mountains of FUN!

Discover and share
your **Adventures** on



The White Mountains is a wonderful place to **escape**, **explore** and **create** unforgettable memories. Experience towering peaks, stunning scenery, spectacular waterfalls, limitless recreation and **17 legendary attractions** that have provided a lifetime of memories and cheer for generations of visitors.

White Mountains Attractions

- 1 Alpine Adventures
- 2 Attitash Mountain Resort
- 3 Cannon Aerial Tramway
- 4 Clark's Trading Post
- 5 Conway Scenic Railroad
- 6 Cranmore Mountain Resort
- 7 Flume Gorge
- 8 Hobo Railroad
- 9 Loon Mountain
- 10 Lost River Gorge & Boulder Caves
- 11 Mt. Washington Auto Road
- 12 Mount Washington Cog Railway
- 13 Polar Caves Park
- 14 Santa's Village
- 15 Story Land
- 16 Whale's Tale Water Park
- 17 Wildcat Mountain

Visit WhiteMountains.com | 603.745.8720

NH Boat Museum seeks donations for auction

Wolfeboro, NH: Wanting to sell your boat or vintage car this summer? The New Hampshire Boat Museum in Wolfeboro has the perfect venue for you at their New England Vintage Boat Auction to be held Saturday, July 16th on the Museum grounds starting at 10:00 a.m.

The Museum is actively seeking consignments and donations for this auction which is the Museum's largest fundraiser of the year. A wide variety of boats as well as boat or lake-related items are sold each year. And new this year, the Museum will be auctioning a select number of vintage and antique cars. The auction draws hundreds of bidders each year making it a great way to sell or purchase a boat or car.

To learn more about consigning or donating a boat or car, either visit the Museum's website at www.nhbm.org or call the Museum to have paperwork mailed to you. Deadlines to send completed paperwork and photographs is June 24.

To help you effectively sell your boat, the Museum has on-line auction listings at www.nhbm.org with photos and detailed descriptions. The sooner your item is listed the more chance you will have of selling your boat or car. Individuals are encouraged to contact the Museum early to finalize their



consignment or donation.

In addition to the on-line preview, the public may view auction items on Friday, July 15, from noon-5:00pm and Saturday, July 16, from 8-10am. Buyers are encouraged to pre-register for the auction on-line at www.nhbm.org to save time the morning of the auction. A typical selection of boats the Museum seeks for auction include wooden, vintage or classic, fiberglass, canoes, sailboats and kayaks in conditions ranging from excellent to good. The Museum also sells small items such as outboard motors and boating accessories.

In addition, items including rustic camp items or lake memorabilia, water skis, camp tables, chairs, stools, lamps, decoys, as well as decorative items such

as lake prints and watercolors are sold at this auction which has something for everyone.

While the Museum accepts consignments, they are also seeking donations. Donations are tax deductible to the extent allowed by law. The donor receives a tax credit, while the proceeds from the sale benefit the Boat Museum and their education programs and exhibits.

Jack McLaughlin, Auction Chair, said, "The Vintage Boat Auction is a great place for those who want to sell their boats, boating items and vintage cars to a large group of

interested buyers from throughout the northeast at a good price. In addition, whether consigning or donating, you will be helping the New Hampshire Boat Museum with their largest fundraiser of the year." For full auction information either visit www.nhbm.org or call the Museum at 603-539-4554.



**LIVE LOBSTERS HARD AND SOFT SHELL
BAKED | FRIED | BROILED | GRILLED | BLACKENED SEAFOOD
STEAKS | CHICKEN & MORE | HARD & SOFT ICE CREAM!!**



**FROM OUR BOAT
TO YOUR PLATE!**

1323 Ocean Blvd, Rte 1A, Rye, NH 603.433.1937 www.petey.com

ON THE WATER | OPEN YEAR ROUND | OCEANVIEW DECK MAY-SEPT, WEATHER PERMITTING

World Quilt New England returns to center of NH



Plainly Not Simple by Denise Havlan, the 1st Place Winner/World Quilt Competition.

Mancuso Show Management's Outstanding New England Quilt Festival, World Quilt New England, returns to the Radisson Center of New Hampshire in Manchester, Thursday, Friday and Saturday, August 18 – 20, 2016. Plus, and new for 2016, the festival will open to all (those who are pre-registered and those who purchase admission at the show) on Wednesday evening, August 17 from 7:00 pm to 9:00 pm. A great long weekend can be spent at World Quilt viewing the spectacular collection of quilts and textile art from all over the world in the event's international competition and special exhibits, learning new techniques and quilt and sewing secrets from the internationally known faculty in workshops and lectures, and shopping in the Merchants Mall. Come be inspired.

The overall highlight for quilt enthusiasts attending this show is the annual premier of the World Quilt Competition. Now in its twentieth year, this international quilt contest draws entries from across the globe. See how quilters from

around the world approach their art! The competition is judged at the Manchester venue where the entries will be on display and viewed for the first time in the United States. After New Hampshire, selected U.S. winners and all of the international quilt entries tour to other Mancuso Show Management venues in Pennsylvania, California and Florida.

You will also enjoy a wide range of quilt and textile related activities including workshops and lectures presented by a renowned faculty. The 2016 faculty includes Rosalie Dace who is from South Africa, and instructors from across the United States including Frieda Anderson (IL), Pamela Druhen (VT), Pat Harrison (RI), Marjan Kluepfel (CA), Dierdra McElroy (CA), Bobbie Bergquist (NH), Bonnie Dwyer (ME), Debora Konchinsky (PA), Nancy Murtie (FL), David Sirota (NH), and offering quilt appraisals Joyce Fischer (NY). Join one or more of these talented instructors in a workshop to learn a new technique or perhaps brush up an old one.



New England Fabrics

Worth the Visit!
If you like Fabrics... You'll love our Store!

- Quilting • Fashion • Yarn & Knitting
- Sewing Machines • Home Decor
- Blinds • Curtains • Upholstery

Central New England's Largest Fabric Center.
New England Fabrics & Decorating Center
Open Mon-Sat 9:30AM-5:30PM
Open Late on Fridays 'til 8PM

newenglandfabrics.com
55 Ralston Street, Keene, NH • 603-352-8683

HUSQVARNA VIKING MACHINES
FABRICS * LACE * CLASSES
REPAIRS * AND MORE
603 • 458 • 1320
401 MAIN ST • UNIT 111 * SALEM, NH
THEVICTORIANCUPBOARDSEWINGSTUDIO.COM

Hodgepodge Yarns & Fibers

LIKE TO KNIT?

COME IN AND BROWSE!

59 Belknap Avenue, Newport, NH (603) 863-1470
Mon.-Fri. 9:30-5:00; Sat. 9:30-4:00; Closed Wed. • Mastercard/Visa

LizzyStitch
Quilt shop and longarm services

Join the QUILTERS SCENIC SUMMER HOP • JULY 14-16

249 Sheep Davis Rd • Concord, NH
Tues.- Sat. 10^{AM}-5^{PM} • 603.724.1918
email: LizzyStitch@LizzyStitch.com

VIEWLAND CAMPGROUND

- Seasonal Sites
- Tent Sites
- Trailer Sales & Rentals

Secluded Tent Camping
600 Ft From Lake Winnepesaukee

6 Viewland Ct., Alton Bay, NH
VIEWLANDCAMPGROUND.COM
603-875-7100

Among the highlights of the 2016 show are two special luncheon presentations by well-known instructors Bonnie Dwyer and Rosalie Dace, and the always-popular World Quilt Panel & Forum Ice Cream Social. In addition, the World Quilt Show will continue to offer its all-inclusive show and hotel package for those who prefer an easy, package plan.

After viewing all the wonderful quilts, it's time to shop. This exciting venue offers a fabulous merchants mall with exhibitors who travel to New Hampshire from throughout the country. From books to threads, from scissors to thimbles, from fabric to patterns

there will be everything imaginable available for purchase by the quilt artist and needlecraft enthusiast.

World Quilt New England is an amazing opportunity to see the work of quilt artists from across the United States and from abroad. This show, the only one of its kind, is not to be missed! Nothing beats New England in the summer!

World Quilt New England is generously sponsored by Major Sponsor Brother, and Sponsors ABM International/Innova, Handi Quilter and SewBatik.

For complete show details and to register online, please visit World Quilt New England.



The Dragon of Greed by Thom C. Atkins, the 2nd Place Winner/World Quilt Competition.

What: World Quilt New England

Where: Radisson Center of NH, 700 Elm St., Manchester, NH

When: Wed. Aug. 17, 2016 • 7pm - 9pm
Thurs., Fri. & Sat., Aug. 18-20, 2016 • 10am - 6pm

Cost: Admission \$12, includes re-admission, children under 16 free.

Join us for summertime fun . . . Don't Just GO to a New England quilt festival, **VACATION** at one!

MANCUSO
Show Management

THE CENTER OF IT ALL FOR QUILT WEARABLE & TEXTILE ART

WORLD QUILT NEW ENGLAND

Radisson Center of New Hampshire
700 Elm Street Manchester New Hampshire

• **August 17: Wednesday, 7pm - 9pm** •
August 18 - 20, 2016
Thursday, Friday & Saturday 10am - 6pm

Admission: \$12 (Includes re-admit) Children under 16 Free

WORLD QUILT & TEXTILE



Quilt Detail: Happy As A Clam By Rachael Daisy

World Quilt Competition

• Over 400 Quilts from 10 Countries on Display!

You Get Here, We'll Do the Rest. All Inclusive Show and Hotel Package Available!

- Fun-Filled Luncheon Presentations Hosted by Bonnie Dwyer (Thurs.) & Rosalie Dace (Sat.)
- World Quilt Panel & Forum Ice Cream Social!
- Fabulous Merchants Mall • Appraisals by Joyce Fischer • Special Judging Seminar • Workshops and Lectures Featuring An Outstanding International Faculty

Rosalie Dace (South Africa), Frieda Anderson (IL), Pamela Druhen (VT), Pat Harrison (RI), Marjan Kluepfel (CA), Dierdra McElroy (CA), Bobbie Bergquist (NH), Bonnie Dwyer (ME), Debora Konchinsky (PA), Nancy Murtie (FL), David Sirota (NH)

NEW Join **ROSALIE DACE & FRIEDA ANDERSON** AUGUST 17-19 • (TUESDAY EVENING, AUG. 16TH RECEPTION)

TRENDS & TRADITIONS Quilt Symposium

Part of World Quilt New England (*Limited to 50 Registrants Only)

www.quiltfest.com | P.O. Box 667 New Hope, PA 18938 | QuiltfestShows QuiltfestShows Quiltfest

Loon Preservation Committee urges public to give nesting Loons space

The Loon Preservation Committee (LPC) recorded its first pair of nesting loons this year on Bolster Pond in Sullivan, New Hampshire, on May 6. This nest was initiated a week earlier than in 2015, but that wasn't a huge surprise considering the record early ice-out on several lakes in New Hampshire this spring. Since then more than 60 loon pairs have begun to incubate eggs, with many more expected to begin in the next week or two. The peak time for loons to start nesting is usually in early June, followed by a four-week incubation period. The peak of hatch of loon chicks generally occurs around the 4th of July Holiday, and loon pairs on nests or with chicks are vulnerable to disturbance as human activities, such as boating and fishing, on the lakes, increase. Simple precautions help ensure a good year for loons in New Hampshire:

- Stay back at least 150 feet from a nesting loon, or more if the loon shows any signs of distress such as craning its neck low over a nest. Loons may even appear to be injured or dead while in this head-down position, but it is simply a response to the close approach of people.

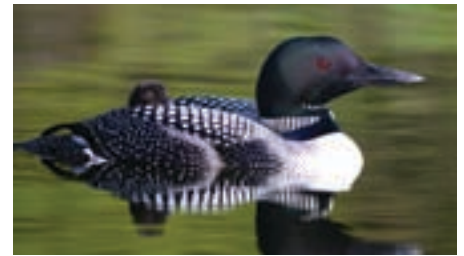
- If you do inadvertently cause a loon to flush from the nest, leave the area immediately to let the loon return to incubate its eggs. Time off the nest leaves the eggs vulnerable to cooling, overheating, or predation.

In 2015, Loon Preservation Committee biologists



An adult loon turning its eggs in a nest on Bolster Pond. This is an important part of the incubation process because it allows for gas exchange and keeps the embryo from adhering to the egg wall. This was the first recorded loon nest for the 2016 season. Photo courtesy of Brian Reilly.

recorded 211 pairs of nesting loons, an increase of three pairs from the previous year. Forty-two of those pairs nested on rafts—artificial islands that LPC floats to help loons cope with water level fluctuations, or being displaced from natural sites by shoreline development or recreational activity on the lakes. Of the 211 nesting pairs, signs and ropelines protected half, and over half of the chicks hatched came from these protected nest sites. Even with this level of management, LPC biologists recorded 79 failed nests, many of them due to human disturbance. Studies indicate that a minimum breeding success rate of 0.48 surviving chicks per loon pair is needed to maintain the loon population over the long term, but



New Hampshire's loons have achieved that level of breeding success in only four out of the last ten years.

Loons are a threatened species in New Hampshire and are protected by state and federal laws from hunting or harassment. If you see a sick or injured loon, please call the Loon Preservation Committee (603-476-5666) or if you observe harassment of loons, please contact the New Hampshire Fish and Game Department (603-271-3361) or Marine Patrol (603-293-2037) for assistance.

The Loon Preservation Committee monitors loons throughout the state as part of its mission to restore and maintain a healthy population of loons in New Hampshire; to monitor the health and productivity of loon populations as sentinels of environmental quality; and to promote a greater understanding of loons and the natural world. To learn more please visit the Loon Preservation Committee on the web at www.loon.org or call (603) 476-LOON (5666.)

The Prouty

July 8 & 9, 2016

Register today
TheProuty.org



5, 10, 15 or 20 miles



20, 50, 77, 100 or 200 miles

NEW FRENCH POND ROAD LOOP



3K, 6K, 9K, 12K
5, 10, 15 or 20K

NEW RESIDENTIAL ROUTES



4 - Person Scramble

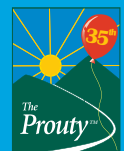
NEW FORMAT

#TheProuty



Benefitting cancer research and patient supportive services at Dartmouth-Hitchcock Norris Cotton Cancer Center

Info@TheProuty.org
1-800-226-8744



Registration now open for 3rd Annual Midnight Owl 15k

Predict right and be the first to cross the finish line after Midnight!

North Conway - Walkers, runners and those wishing to tour scenic Mt. Washington Valley under the light of the moon are invited to register now for the 3rd Annual Midnight Owl 15K on Saturday, July 16, 2016 under a nearly full moon. The running/walking event is the signature fundraising event for Mount Washington Valley Skating Club, with the course ending at Conway's Ham Arena, the home ice rink for the club.

The Midnight Owl 15K is unique in that it happens at night, and the trophies go not to the fastest but those who are "wisest" or best able to predict how long it will take them to run or walk the 15K course. The race winners are the first five runners (or walkers) to cross the finish line AFTER midnight. Those who arrive first may not receive a prize if they cross the line before midnight.

"This was the most fun course I've ever run," said Christine Thompson, a frequent runner and one who has participated in the first two events. According to race organizer, Madeleine Ryan, the runners who've participated in this race share that they love the rare opportunity to enjoy the area's scenic beauty by moonlight. Other runners express the lure of the race is its unusual format and not having to race against



others in the usual way.

The Midnight Owl 15K will start at Schouler Park across from the Conway Scenic Railroad and finish at the back entrance to the Ham Arena. A shuttle bus will be available to bring runners back to Schouler Park. For full course details, click here.

The course will officially open at 9:30pm with participants deciding when to start running based

on their estimation of how long it will take them to cover the 15K (9.3 mile) course. A large pace chart will be located near the race start to aid participants in deciding when they should start their race. All participants will be required to wear reflective vests/clothing and either wear a headlamp or carry a flashlight. Discounted Jog-a-Lite reflective vests can be purchased through the race registration website and a limited number of these vests will be available for purchase the night of the race.

Online registration for the Midnight Owl 15K is through racemenu.com. Participants are encouraged to take advantage of the "Early bird" registration fee of \$35.00 which extends from now through June 15, 2016. Regular registration fee is \$40.00 and extends from June 16 to June 30, 2016. All participants who register prior to this date are guaranteed a tech T-shirt. Late registration carries a \$45.00 fee and extends from July 1 through July 16, 2016 with no guarantee of a T-shirt. All finishers will receive a commemorative finisher's medal and post race refreshments.

The Midnight Owl 15K is hosted by the Mount Washington Valley Skating Club with all net proceeds going to support its programs. For more information on the Skating Club visit www.mwvsc.org. To register for the Midnight Owl 15K go to racemenu.com.

MT. KEARSARGE INDIAN MUSEUM

One Circle, 1000 Stories. Experience It!

Intertribal Powwow July 9 and 10

Gates Open 10am, Grand Entry Noon each day
Music, dance, storytelling, crafts, food, vendors



Glooscap/Kluskap of the Wabanaki

Paintings by Maliseet artist Dozay
In the Contemporary Art Gallery
through September

Subscriptions for Historic Portsmouth Chamber Music on sale

Four concert series kicks off July 10 with Central4 Piano Quartet and runs through October

PORTSMOUTH, NH: Subscriptions are now on sale for Historic Portsmouth Chamber Music. The 2016 series of four concerts kicks off Sunday, July 10, 2016 at 3pm with the Central4 Piano Quartet and continues through October. Historic Portsmouth Chamber Music is produced by the Portsmouth Athenaeum.

"This year's Historic Portsmouth Chamber Music includes both series favorites and new performers," noted Bill Wieting, Chairman of the Portsmouth Athenaeum Performance Committee. "We are excited to be beginning this year's schedule with well-known series favorite, violist Meredith Crawford, who will be joining us from California to perform with her piano quartet, Central4."

The 2016 Historic Portsmouth Chamber Music lineup includes:

July 10: Central4 Piano Quartet at St. John's Church in Portsmouth performing Mozart's Piano Quartet in G Minor, Gabriel Faure's Piano Quartet in C Minor, and Joaquin Turina's Piano Quartet in A Minor;

August 21: Violinist Emily Daggett Smith and pianist Tanya Gabrielian at the New Castle Congregational Church performing Shostakovich's 24 Preludes, Opus 34, Beethoven's "Spring" Sonata No. 5 in F Major, Fritz Kreisler's arrangement of Mozart's



Rondo, and Debussy's Violin Sonata in G Minor;

September 25: Omer String Quartet at North Church of Portsmouth performing Debussy's String Quartet in G Minor and Bartok's Quartet No. 1 in A Minor; and

October 23: Maine-based Abitare Trio at St. John's Church in Portsmouth performing Mozart's Piano Trio in G Major and Mendelssohn's D Minor Piano Trio.



Audience members planning to attend all four concerts are encouraged to purchase a Series Subscription for \$75.00 per person. The Portsmouth Athenaeum also offers Series Patronage for \$250 per person, which includes all four concerts plus an invitation to a post-concert reception after each event. There is a suggested \$20 at-the-door donation for those attendees who do not wish to subscribe. Those interested in subscriptions or patronage can mail a check made out to The Portsmouth Athenaeum, P.O. Box 848, Portsmouth, NH 03802 with "HPCM" noted on the memo line. For more information on Historic Portsmouth Chamber Music or the Portsmouth Athenaeum, please visit www.portsmouthathenaeum.org.

CORNISH FAIR

Little Fair **BIG FUN**

AND SULLIVAN COUNTY 4-H FAIR
CORNISH, NH • TOWNHOUSE ROAD (BETWEEN ROUTES 120 & 12A)

AUGUST 19 - 20 - 21 • 2016

FRIDAY - SATURDAY - SUNDAY

Animal Exhibits & Shows — Arts & Crafts — Midway Rides
Family Friendly Stage Entertainment & Bands — Food
Woodsmen Field Contest — Horse, Ox & Tractor Pulling

Admission \$10, Kids 12 and under FREE, Parking FREE, Handicapped Parking Available

www.cornishfair.org

8TH ANNUAL

An 18th century field battle,
Photo by Sue & Bob Hofstetter

Living History Event NH

August 20th and 21st 2016

H

eld on four action-packed sites located throughout Hillsborough, NH, this event promises a weekend of fun for you and your entire family. Horse and buggy rides, stone arch bridge tours, panning for gold, specialty programming, children's activities, an artisans' faire, period musicians, Native American activities, self-guided tours of the President Franklin Pierce Homestead, and more than 250 re-enactors on historic Jones Road who bring historic wars to life, provide you with exceptional family entertainment value. Our special guest this year is Steve Edenbo who portrays Thomas Jefferson, author of the Declaration of Independence and our third President of the United States.

4 Action Packed Sites • Battles • Family Learning Adventures • More
New in 2016 - Abigail Adams • Annie Oakley • Molly Pitcher

One inexpensive fee for the entire weekend. \$10/adult, \$8/senior, \$5/6-17

Visit us for more information at LivingHistoryEventNH.com

Tickets for Village Sunset Dance Performance “RELEASED” on sale

Canterbury, NH: Tickets for Village Sunset Dance Performance “RELEASED” at Canterbury Shaker Village are now on sale. The event will take place at the Village on Friday, August 5, 2016 at 7:30pm. This inaugural performance is being curated by Canterbury Shaker Village’s Resident DanceMaker Lorraine Chapman and will feature works by outstanding choreographers including the premiere of a new collaborative work inspired by original Shaker dances. This program is part of the Shaker Dance Revival Project, a strategic program that honors Shaker dance while rethinking these traditions for contemporary audiences and dancers.

This original piece, co-created by choreographers David Parker, a Guggenheim Fellow, and Lorraine Chapman, a Dance Magazine “25 To Watch,” will be performed by their award-winning companies The Bang Group and LCTC.

“RELEASED” will also feature works by the ineffable Diane Arvanites; Boston treasure Marcus Schulkind; and Doppelgänger Dance Collective—comprised of Shura Baryshnikov and Danielle Davidson—who will perform a duet titled “The Two Body Problem” by internationally known technologist, choreographer, and writer Sydney Skybeter.

The program concludes with an excerpt from “Brilliant Being,” a devised work using dance and technology evolving synchronously through



Photo by Purpleganesesh Photography

collaboration with a team of artists/faculty members from the Music, Theatre, and Dance Departments at Plymouth State University, including NH-based choreographer Amanda Whitworth of Tributary Dance NH; projection mapper, scenographer, and technologist Matt Kizer; playwright Paul Mroczka and composer Jonathan Santore. Tickets are \$45

General Admission; \$75 VIP (includes pre performance reception); \$15 students and children. Ticket purchase at any level includes admission to Village Rising on Saturday, August 6, which will feature a second Shaker Dance Revival Project performance, “Rising & Rotating.” For more information or to purchase tickets, visit www.shakers.org.

DUNCKLEE

Timberframe and Boat Works LLC

Duncklee Timberframe and Boatworks provides custom built structures and small boat building & restoration.



• *Located in New Hampshire* •
All of our projects are crafted with family heirloom antique tools, and built with strict attention to detail.



Summer

Family

Discovery

Time!

Explore, Discover, and **Enjoy** this award-winning Science Center—where learning is part of the fun—indoors and out. **Open daily 10 - 5**



Montshire Museum of Science

Norwich, VT • montshire.org • 802-649-2200

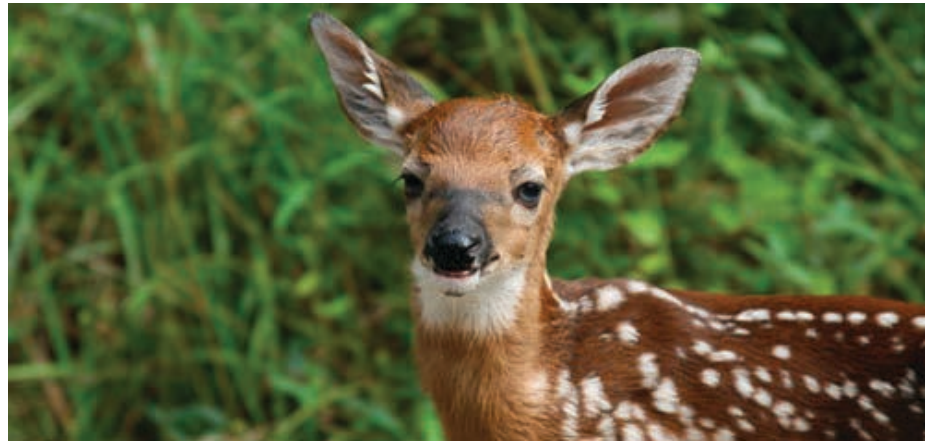
Leave Fawns and other young wildlife alone

The best chance a young wild animal has to survive is in its natural environment under the care of its mother.

CONCORD, N.H. -- In the coming weeks, deer will begin giving birth around the state. The majority of deer fawns are born in New Hampshire in May and June. Each spring, many New Hampshire residents see young fawns by themselves and fear the worst. Has the mother died? Has she abandoned her fawn? The answer in most cases is NO. The doe is likely not far off, waiting to return to feed her newborn fawn.

Adult deer can be easily detected by predators due to their scent and large size. Because of this, does will spend long periods of time away from their fawns to disassociate their scent from the fawn and keep them safe from predators. For the first month of life, the doe will only visit the fawn a few times a day to nurse quickly before leaving again, although usually not going too far.

Unfortunately, well-intentioned, but misguided, individuals see fawns alone, assume they are abandoned, and take them in to "help" them. Most of the time they are removing the fawn from the care of its mother, who was waiting to return. The best chance a young wild animal has to survive is in its natural environment under the care of its mother.




If you see a fawn (or any other young wildlife) and suspect it has been abandoned or orphaned do not move the animal. Contact N.H. Fish and Game by emailing wildlife@wildlife.nh.gov or calling (603) 271-2461 and make a report. Fish and Game staff can assess the situation and help determine the best course of action. In most cases it is best to leave the fawn alone and allow time for the mother to return to move it to a different location.

NEVER take in wildlife. Only qualified people with special rehabilitator permits, issued through N.H. Fish and Game, may take in and care for injured

or orphaned wildlife. Improper care of injured or orphaned wildlife often leads to their sickness or death. For example, deer fawns that have been fed cow's milk will develop severe diarrhea (scours). Every year, the state's only licensed fawn rehabilitator has several fawns die from scours because they have been improperly fed or cared for by the public. Unless you have rehabilitator credentials, it is ILLEGAL to have in your possession or to take New Hampshire wildlife from the wild and keep it in captivity. For a full list of licensed wildlife rehabilitators, go to www.wildnh.com/wildlife/rehabilitators.html.

More than a museum – a chance to rethink tradition




Learn, Reflect, Renew

A visit to Canterbury Shaker Village will renew your spirit and linger in your memory long after you return home. This National Historic Landmark offers an opportunity to learn about the Shakers' 200-year legacy of innovation, entrepreneurship and simple living and reflect on how these traditions connect with your own life.

The historic Village includes:

- 25 original and four reconstructed Shaker buildings
- 694 acres of fields, gardens, forest, mill ponds and trails
- Only intact first generation Shaker Meeting House (1792) and Dwelling House (1793) in original locations
- Guided tours and self-guided exhibits
- Demonstrations daily
- Museum Store filled with simple gifts of artisan quality
- Lunch available at Shaker Box Lunch & Farm Stand

Open daily May 14-October 23 • Monthly Special Events



CANTERBURY SHAKER VILLAGE

288 Shaker Road • Canterbury, NH 03224 • 603-783-9511 • www.shakers.org



STRAWBERRY BANKE MUSEUM

Portsmouth, New Hampshire

In the Montrone Family Gallery, Thales Yeaton House. Open daily May 1 through October 31. Included with regular admission.

This exhibit at Strawberry Banke Museum focuses on the maritime history of Portsmouth NH and the Seacoast, showcasing a collection of models and paintings of ships built in Portsmouth and the stories of the people who built and sailed them.

Eight beautifully-crafted models of Portsmouth-built sailing ships form the centerpiece of the exhibit and trace the urgency of the American Revolution, the history of the Triangle Trade and the knife's edge balance of the Civil War. Paintings and historical artifacts once owned by ships' masters and builders add insight into life in maritime Portsmouth.



14 Hancock Street
Portsmouth NH 03801
603.433.1107
StrawberryBanke.org



Midweek In Manchester Antiques Show at JFK Coliseum

Barn Star Productions is proud to announce its' flag ship event the MidWeek in Manchester Antiques Show is returning to Manchester, New Hampshire after a four year run in Concord, NH. The show that started Antiques Week in New Hampshire will be premiering at its new location on Wednesday, August 10 and Thursday, August 11 at the JFK Memorial Coliseum, 303 Beech Street, Manchester with over 50 exceptional and talented dealers in room setting displays.

Comments show manager Frank Gaglio, "Our MidWeek in Manchester Antiques Show actually started in Bedford, NH in 1994 at the historic Wayfarer Inn where it ran for sixteen years encompassing the entire convention center and huge tent pavilion. When the Inn was sold we found a new home at the Furniture World Building until that facility sold then moved to Concord for three years. With Concord being 20 miles away from the other antiques week events and the JFK Coliseum available, the decision was made to bring the show south and back into the "action". We are very excited with our new home and will present great exhibitors offering exceptional antiques at buyable prices."

Among the amenities you will find at the show are free parking, a show café by Alan's of Boscawen, complimentary decorating and antiques magazines, air conditioning, handicap accessibility, complimentary shuttle from MidWeek to the AIM Show Wednesday from 12 noon to 6PM, plus unlimited re entry both days. ▶





With exhibitors coming from 12 states and Canada, some of the categories of material presented this year will be American and English furnishings and accessories, fine and folk art, estate and vintage jewelry and watches, creamware and rare ceramics, Inuit art and carvings, samplers and fine porcelain, Black Forest carvings, Woolies, 17th and 18th century brass candlesticks and lighting, early portraits, silhouettes, nautical, Oriental rugs, rare and vintage posters, early redware and stoneware pottery, period and folk frames, quilts and early textiles, weathervanes and trade signs, Pennsylvania painted and decorated furniture, Fraktur and so much more.

Show hours are Wednesday, Aug. 10; 1pm till 6pm and Thursday, Aug. 11; 11am till 4pm. Managed by Barn Star Productions, Inc. Show phone (914) 474-8552. For more information, hotel discounts and full exhibitor list, visit www.barnstar.com MidWeek in Manchester. . . your collection starts here.



PARKER'S MAPLE BARN

One of New Hampshire's Top Restaurants

Featured in Yankee Magazine's
Editor's Choice Award —



Best Place to Visit
2013, 2014, 2015, 2016



NH Magazine's
Reader's Choice Award for
Best Pancakes
2013, 2014, 2015



IN OUR EXPANDED GIFT SHOP AND COUNTRY STORE...

- Native American Arts & Crafts
- Lots of Affordable Jewelry
- Tons of Maple Products & Gift Baskets
- Mail Orders Available
- We Ship Anywhere

MASON, NEW HAMPSHIRE

(only 3 miles off Route 13) Call for Best Directions
(603) 878-2308 or 1-800-832-2308

Restaurant & Gift Shop Hrs:
Mon.-Fri. 8^{AM} - 2^{PM}; Sat. & Sun. 7^{AM} - 4^{PM}

Visit our online store!

For more info: <http://www.parkersmaplebarn.com>

Loon Mountain Resort for summer adventure

Summer and Fall Adventures & Activities

This summer, Loon offers a full range of exciting activities for the whole family. For high-altitude adventure, guests can ride New Hampshire's longest scenic Gondola Skyride to the summit of Loon Peak, where fun mountaintop activities await. Visitors to the summit can climb an observation tower to enjoy spectacular views of the White Mountains; have lunch at the Summit Café; take a self-guided nature walk, and explore cool summit glacial caves.

Visitors looking for high adventure can zipline across the roaring Pemigewasset River, scale an outdoor climbing wall, or rent a mountain bike to explore area paths and trails. Young adventure-seekers will love Loon's bungee trampolines, a 30-foot-tall Spider Web with a giant inflatable slide, and Bunyan's Bouncin' Backyard, a kid-friendly setup featuring a bounce house and inflatable games. Families can also tackle the giant Logjam Maze, where they can work together to negotiate twists, turns, and dead ends as they race against the clock. After working up an appetite, guests can grab lunch at the Whistlestop Café or cool off with an ice cream cone at the Adventure Center Snack Bar.

Aerial Forest Adventure Park

The Aerial Forest Adventure Park offers a truly unique challenge for adventure seekers. Located high in the alpine forest, the park consists of five ropes courses of



varying difficulty levels, perfect for families with kids ages seven and older. Participants are challenged to maneuver from platform to platform high up in the trees by crossing bridges, climbing ladders, zooming across zip lines, and negotiating other obstacles. The Aerial Forest Adventure Park is a great confidence-building activity for individuals, as well as a team builder for families and groups.

One Pass for All-Day Adventure

Loon's Adventure Pass and Super Adventure Pass are great ways for families to save on an entire day of fun this summer. The Adventure Pass, at \$44 for adults and \$34 for juniors, allows unlimited access to the Gondola Skyride, climbing wall, and bungee trampoline - plus a two-hour bike rental, round-trip zipline, & entry into the

AMERICA'S STONEHENGE
...EXPLORE THE MYSTERIES!

INVESTIGATE CHAMBERS
KIDS GEMSTONE DIG
Open thru Labor Day Weekend
VISIT THE ALPACA HABITAT

A 4,000 YEAR OLD ADVENTURE IN ARCHAEOLOGY
105 Haverhill Road | Salem, NH 03079
www.StonehengeUSA.com

180 acres of Scenic Splendor in the Heart of New Hampshire's White Mountains

INDIAN HEAD RESORT
180 ACRES OF SCENIC SPLENDOR IN THE HEART OF NEW HAMPSHIRE'S WHITE MOUNTAINS

Outdoor Heated Pool-OPEN ALL YEAR
Indoor Heated Pool

FIREWORKS EVERY SUN & THURS JUN 26 TO AUG 25*

Exit 33 off I-93, Lincoln, NH 03251
800-343-8000 www.indianheadresort.com
*Weather Permitting

LogJam Maze. The Junior package also includes use of the Spider Web and Bunyan's Bouncin' Backyard. The Super Adventure Pass — at \$73 for adults and \$63 for juniors — offers all of those activities, plus a two-hour session in the Aerial Forest Adventure Park.

SUMMER & FALL EVENTS

July 3: Loon Mountain Race. Named the “Most Competitive Hill Climb” by Runner’s World Magazine, this tough course climbs more than 3,000 vertical feet in less than seven miles. The final mile of the race features a punishing climb up Upper Walking Boss, a black diamond ski slope with a 40 percent grade. This year, the race will serve as the USATF Mountain Running National Championships, with the top 6 men and 4 women advancing to the World Mountain Running Championships in Bulgaria.

July 9: 6th Annual Monster Mud Run. A fast and filthy 5k featuring more than 20 obstacles and 1,000 feet of climbing over 3.1 ruggedly muddy miles. Kids can get in on the action with the Mini Monsters Run, a fun romp through a pint-sized obstacle course. Entry fee is \$68 through July 4. To register online: www.loonmtn.com/experience/events/monster-mud-run.

Aug. 7: Touch a Truck Day. Kids will love getting an up-close look at the trucks, grooming machines, and other heavy equipment that keeps Loon running all year long.

Sept. 16-18: New Hampshire Highland Games & Festival. One of the largest Scottish festivals in the country, the Highland Games will feature top Scottish bands, classic Highlander cuisine, Scottish heavy athletics.



Reserve tickets at www.loonmtn.com.

Oct. 1: O2X Summit Challenge. Starting near the banks of the Pemigewasset River, runners will traverse old logging trails, climb steep glades, and bushwhack through stunning fall foliage as they make their way to the summit of Loon Peak. Register at www.o2x.com.

Oct. 8-9: White Mountain Oktoberfest. Beer, brats, and peak fall foliage join forces for a festive weekend in the White Mountains. Highlights include an oompah band, stein-holding contest, and keg-toss - plus activities and contests for kids, too. Free admission. For more information visit www.loonmtn.com.

Drive, Tour & Explore MOUNT WASHINGTON

Find adventure at every turn on the legendary Mt. Washington Auto Road

ELEVATE YOUR ADVENTURE

1 Mount Washington Auto Rd, Route 16, Gorham, NH
(603) 466-3988 • MtWashingtonAutoRoad.com

Celebrate Summer with a paddle on Great Bay

The Great Bay Discovery Center at 89 Depot Road in Greenland, NH, is offering the following paddling events this summer. For more information or to register, call (603) 778-0015.

■ **Sunset Birding Paddle**

Level: No prior paddling experience necessary.

Participants: 12, Date: June 28 from 6:30-9:00pm

Location: Great Bay Discovery Center

Cost: \$35 per person, \$30 for Great Bay Stewards members, \$25 with own kayak.

Join us for an evening paddle as we search for our beaked friends. As the sun set casts its hues over Great Bay, we will look for osprey, great blue heron, egret, kingfisher and many more estuary inhabitants. Countless birds call the area around the bay home, so we will hope to see a unique and diverse display of them all. Bring your friends, and together, share in a unique opportunity to paddle the bay at dusk!

■ **Cocheco River Trip**

Level: This trip is longer and more strenuous than our other offerings, so we recommend prior paddling experience.

Participants: 10, Date: June 25 from 1:30-5:30pm

Location: Downtown Dover, NH

Cost: \$45 per person, \$40 for Great Bay Stewards members, \$35 with own kayak.

The Salmon Falls and Cocheco Rivers are two of the

seven rivers that flow into the Great Bay Estuary. Meet us in Dover as we begin our trip. From here we will shuttle to the start in the Salmon Falls River and paddle back up the Cocheco to the downtown area. The Cocheco has beautiful scenery around every corner, as birds fly overhead and deer, otter and other wildlife can often be seen in and around the banks of the river. We will end our trip at just the perfect time for you to head off on your own to enjoy dinner in historic downtown Dover. Note: participating in the trip requires shuttling before and after.

■ **Kayak Fishing with Hope**

Level: We recommend prior fishing and/or kayaking experience. Participants: 8, Date: July 9 from 11:00-3:00pm OR July 23 from 10:00-2:00pm

Location: Odiome Point, Rye NH

Cost: \$60 per person, \$50 for Great Bay Stewards members, \$50 with own kayak.

Have a passion for fishing and kayaking? Join NH Guide, Hope Eagleson as she shares her secrets to successful striper fishing in Coastal NH. Fishing from a kayak presents a number of challenges which Hope will address prior to going on the water. The remainder of the time will be spent fishing and hopefully catching one of NH's feistiest game fish! A New Hampshire Saltwater fishing license is required.

■ **Adams Point Island Exploration**

Level: No prior paddling experience necessary.

Participants: 12, Date: July 30 from 9:30-12:30pm

Location: Adams Point, Durham NH

Cost: \$40 per person, \$35 for Great Bay Stewards members, \$30 with own kayak.

Come experience some of Great Bay and Little Bay's islands by kayak! We will begin our journey at the beautiful Adams Point Wildlife Management Area, a peninsula jutting out into the waters of Great Bay. We will paddle around some private islands just south of Adams Point, before heading north to an island owned by the National Estuarine Research Reserve. Bring a bagged lunch; we will be stopping on this island to enjoy lunch together before heading back to shore!

■ **Over-The-Hump Sunset Paddle**

Level: No prior paddling experience necessary.

Participants: 12, Date: Aug. 24 from 5:30-8:00pm

Location: Great Bay Discovery Center

Cost: \$35 per person, \$30 for Great Bay Stewards members, \$25 with own kayak.

Having trouble getting through your week? Join us for a "Hump Day" sunset paddle to give you the extra boost you need to make it through! Together, we will enjoy a paddle on the Great Bay as the sun sets and the moon rises. The estuary is teeming with a variety of wildlife during the evening and we will have a chance to spy some of them. This event is sure to help you unwind from the beginning of your busy week and rejuvenate you to make it through the rest of it.

DAY OUT WITH THOMAS
Team up with Thomas and Percy for a day of family fun!
READY, SET, GO!
THE TOUR 2016

July 22-24 & July 29-31
Conway Scenic Railroad
ConwayScenic.com

Enjoy a train ride with Thomas, meet Sir Topham Hatt, and much more!

FOR TICKETS
Visit ticketweb.com/dowt or call 866-468-7630

Day Out With Thomas™ © 2016 Gullane (Thomas) Limited. Thomas & Friends™ Based on The Railway Series by The Reverend W. Awdry. © 2016 Gullane (Thomas) Limited. Thomas the Tank Engine, Thomas & Friends and Day Out With Thomas are trademarks of Gullane (Thomas) Limited. ©2016 Mattel. All Rights Reserved. ® and ™ designate U.S. trademarks of Mattel, except as noted.

Fisher Price

24th Annual
Pemi Valley Bluegrass Festival
Music in the Mountains
Thursday-Sunday
August 4-7, 2016
Always the 1st weekend in August
Sugar Shack Campground • Rte 175 • Thornton, NH

Presented by
Pemi Valley Bluegrass Associates
P.O. Box 486
Plymouth, NH 03264
603-726-6005

FREE Field Camping
Early Bird Pricing
till June 30th

Complete info at:
www.PemiValleyBluegrass.com

Driving Miss Daisy comes to Peterborough Players

Winner of the 1988 Pulitzer Prize for Drama, Alfred Uhry's *Driving Miss Daisy* is a warm-hearted, humorous and affecting study of the unlikely relationship between an aging, crotchety white Southern lady, and a proud, soft-spoken black man. In its initial run, *Driving Miss Daisy* was an Off-Broadway success and became an Academy Award-winning film. Tickets can be purchased by calling the box office at 603-924-7585 or online at www.peterboroughplayers.org

Our exceptional production comes to Peterborough from Sarasota, FL where it performed sold-out performances at the Westcoast Black Theatre Troupe. Featuring Carolyn Michel (star of the Players 2014 production of *Family Secrets*), Taurean Blacque (known for his portrayal of Det. Neal Washington in *Hill Street Blues*) and Kraig Swartz (Winner of the 2015 New Hampshire Theatre Award for Best Actor for his portrayal of Fanny Babs in the Players production of *Charley's Aunt*). *Driving Miss Daisy* is directed by Howard Millman.

In its review, the Herald-Tribune highlighted that the play is told in such a way that "the performers wrap around your mind and heart and draw you into this gentle story of an unexpected friendship amid a changing society." *Driving Miss Daisy* runs June 22 through July 3. Performances are at 7:30pm Tuesday-



Saturday and 4pm on Sundays. Single Tickets are \$39. Subscriptions and Passes are available and offer discounted ticket rates. For tickets and information call the box office at 603-924-7585 or visit us online at www.peterboroughplayers.org

The Players is also gearing up for the opening of our first Second Company Family Show of the season: "Miss Nelson is Missing" adapted by Joan Cushing from the classic book of the same name, this witty, wacky musical is sure to entertain audiences of all ages. As the MD Theatre Guide put it in their review:



"Miss Nelson is Missing! earns an A+!"

Performances for *Miss Nelson is Missing!* are on June 25, July 1, 2, 8, 9, 13, 15, 16, 22 and 23 at 10:30am. Tickets are \$10 for Adults \$8 for Children.

The Players is excited to offer a new pass option: the TOGETHER PASS! This pass includes 2 tickets

for 2 shows on a Friday or Saturday. PLUS 4 tickets one performance of a Second Company Family Show That's 8 tickets for only \$152. This is the perfect option for parents, grandparents or anyone looking to share the Players experience with family and friends.

Tickets can be purchased by calling the box office at 603-924-7585 or online at www.peterboroughplayers.org

Vermont Made ALUMINUM DOCKS, SWIM FLOATS & more



Create an oasis in your backyard...

Go easy on your back this year with one of our beautiful docks constructed from lightweight aluminum right here in Vermont. Our docks are sturdy and virtually maintenance free. There are no sharp edges or abrasive materials to worry about. Choose from rustic cedar decking or more modern Thruflow composite decking. Our docks come in any size or configuration....we design it to fit your needs.



We also fabricate aluminum truck racks and folding goat milking stands. We can also repair most anything aluminum. Give us a call...we'd be happy to assist you.



High Country
ALUMINUM DOCKS ETC

Hartford, VT (Route 14 behind the CT Valley Auto Auction)

Find us on the web at www.highcountryaluminum.com

802-281-8245 • Toll Free 877-274-2721

Email: vt docks@gmail.com Open Mon-Fri 8:00 to 4:30

FREE FOOD



with the purchase of four tickets

online only, promo code: FREEFOOD



courtesy of

NORTHEAST DELTA DENTAL STADIUM

HOST YOUR NEXT OUTING AT THE BALLPARK!

ENJOY OUR CLIMATE-CONTROLLED LUXURY SUITES



Corporate Outings, Meetings, Weddings, Rehearsal Dinners, Private Batting Practices, Trade Shows & more!

events@nhfishercats.com



Private Balcony, 18 Tickets, 2 VIP Parking Passes, Visit from Fungo or Slider, Optional Food Packages & Much More!

SUMMER CAMPS



July 18, 19, & 21, 22
Aug. 1, 2, & 4, 5
Aug. 15-19

Dartmouth-Hitchcock



HITTING



PITCHING



FIELDING



THROWING



T-SHIRT



TICKET



AUTOGRAPHS

REGISTER AT:

NHFISHERCATS.COM

NHFISHERCATS.COM



603.641.2005

Museum of Art, UNH, registration open, Summer Art Camp grades 2-12

The Museum of Art, UNH is pleased to offer community engagement opportunities in the visual arts with week-long summer art classes for grades 2-8 and art intensives for high school student's grades 9-12, during the weeks of July 18-22 and July 25-29, 2016. Summer Art Camp is a day camp, offering sessions from 9am to noon and 1-4 pm. Hands-on classes are taught by experienced artist-teachers who encourage and inspire art making. No prior experience is required for students and all materials will be provided. At the end of each week, four studio receptions will be held; Friday, July 22 from 11am-noon and 3-4pm and Friday, July 29 from 11am-noon and 3-4pm. These receptions will showcase students artwork completed throughout each week and families are encouraged to attend. The Museum of Art is located at the Paul Creative Arts Center, 30 Academic Way, Durham.

Classes offered week 1: July 18-22, 2016: Students in grades 2 - 12 have a wide variety of mediums to choose from including painting, drawing, printmaking, drawing, mixed media, clay and digital photography, Morning sessions (9am- noon) include: HANDS-on with CLAY!, with instructor Moriah Mazzochi (Grades 2-3), Art Innovate!, with instructor Kimberly Olson (Grades 4-5), FUNDamentals of Drawing & Painting, with instructor Allie Aponik (Grades 4-5). Introduction to Digital Photography with instructor Addie Fisher (Grades 6-8), FUNDamentals of Drawing & Painting, with



instructor Karen Mawikere (grades 6-8), Drawing Studio, with instructor Sean Ware (grades 9-12). Afternoon sessions (1 - 4pm) The Great Art Experiment!, with instructor Kimberly Olson (Grades 2-3), Introduction to Digital Photography, with instructor Addie Fisher (Grades 4-5), FUNDamentals of Clay:with instructor Moriah Mazzochi (Grades 6-8), Drawing Studio, with instructor Allie Aponik (Grades 6-8) and DRAWING/WATER MEDIA, with instructor with instructor Sean Ware, (Grades 9-12).

During the second week, July 25 -29, morning sessions (9am- noon) include: Artist Study: Becoming

Andy Warhol!, with instructor Kimberly Olson (Grades 2-3), MIXED MEDIA, with instructor Karen Mawikere (Grades 2-3), include: Clay, sound and instruments!, with instructor Moriah Mazzochi (Grades 4-5); MIXED MEDIA, with instructor Allie Aponik (Grades 4-5), MIXED MEDIA, with instructor Jamie Bowman (Grades 6-8), Drawing Studio, with instructor Sean Ware (grades 9-12) and Introduction to Digital Photography, with instructor Addie Fisher (Grades 9-12). Afternoon sessions (1-4pm) Artist Study: Becoming MC Escher, with instructor Kimberly Olson (Grades 4 - 5), FUNDamentals of Drawing & Painting, with instructor Jamie Bowman (Grades 4-5), Introduction to Digital Photography, with instructor Addie Fisher (Grades 6-8), and FUNDamentals of Drawing & Painting, with instructor Allie Aponik (Grades 6-8), Clay, with instructor Moriah Mazzochi (Grades 9-12) and Drawing & Painting Studio, with instructor Sean Ware (grades 9-12).

Classes are subject to cancellation and include the cost of basic materials. Lunch and snacks are not provided, but students enrolled in a full day of courses are welcome to bring their lunches to enjoy in the Paul Creative Arts Center. Supervision is provided during the lunch hour. For a complete description and cost or to register on-line, visit the Museum of Art's website. For general information about the Museum's exhibitions and programs, contact the Museum of Art at 603-862-3712, museum.of.art@unh.edu, or visit www.unh.edu/moa.

The Songo River Queen II

May - October
Daily Cruises in Season
Visit our website for schedules & pricing

- **Theme Cruises**
- **Season Passes**
- **Private Charters**

Long Lake offers some of the most beautiful scenery in the region!

\$2.00 OFF Adults
\$1.00 OFF Children
Expires 10/10/16

Rt 302 / The Causeway • 841 Roosevelt Trail • Naples, Maine
207-693-6861 www.songoriverqueen.net



Newfound Lake
VINEYARDS

Open Friday evenings 5:30 - 8:30PM
Saturday & Sunday from Noon to 5PM

603-455-0182
567 West Shore Road • Bristol, NH
www.newfoundlakevineyards.com

Latin Music on the Library Plaza

The Nashua Public Library's Summer Concerts on the Plaza continue with the return of Grupo Fantasia on Thursday, July 28, at 7 p.m. The free concert will feature merengue, salsa, and other Latin music perfect for a summer evening in the outdoors. The musical director of Grupo Fantasia is Angel Wagner, a master percussionist who plays more than 30 instruments. He has studied at the Harbor Arts Academy in New York and at the Berklee College of Music in Boston. Originally from the Dominican Republic, he began his career playing with a cheese grater and fork. Even today, his group's style of traditional island entertainment includes many numbers performed on original, handmade indigenous instruments.



Wagner's concert venues have included the Museum of Fine Arts, the Museum of Science, the De Cordova Museum, and the Boston Children's Museum. Grupo Fantasia performed at the inauguration gala of Gov. Deval Patrick of Massachusetts and in 2009 won the New England Urban Music Award for Best Latin Band.

Future concerts in the library's outdoor series include:

August 4 - Shannachie (Irish songs and stories) preceded by Trash Talk (percussion) at 6:30 p.m.

August 11 - Bill McGoldrick Acoustic Duo (folk, pop)

Bring a blanket or a lawn chair and enjoy the music. All performances begin at 7 p.m. and are free and open to the public. In the event of rain, they are held indoors in the library theater. The library is located at 2 Court Street. Visit nashualibrary.org/visit/ directions to find out where to park. For more information, call (603) 589-4610.



PROFESSIONAL THEATRE • EST. 1933
PETERBOROUGH PLAYERS

2016 Summer Season

"American summer repertory theater at its most accomplished."
-The Wall Street Journal

**SUBSCRIPTIONS
and
TICKETS
AVAILABLE NOW!**

**Share in the experience
by calling our box office
to secure
your summer
with the Players!**



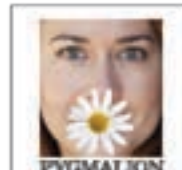
A comedy/drama by Alfred Uhry
June 22 - July 3



A new drama by Sharr White
July 6 - July 17



A comedy by Christopher Durang
July 20 - July 31



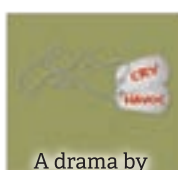
A comedy by George Bernard Shaw
Aug 3 - Aug 14



A comedy by Charles Morey
Aug 17 - Aug 28



A comedy by Yasmina Reza
Aug 31 - Sept 11



A drama by Stephan Wolfert
Sept 14 - 18

THE SECOND COMPANY Family Shows!



June 25 - July 23



Aug 20 - Aug 27

For more information
call our
Box office
at **603-924-7585**
or visit us
online at
peterboroughplayers.org

GOLF

Golf makes historic return to the Olympics, NBC to cover it

Golf's return to the Olympic Games for the first time in 112 years represents a modern-day first as Golf Channel joins NBC Sports' unmatched Olympic heritage to become the first single-sport cable network to provide live coverage of its sport's Olympic competition. And as today marks 100 days until golf officially makes its return to the Olympic Games, NBC Olympics has announced its on-air programming

plans for golf coverage during the 2016 Rio Olympics. Golf Channel will feature more than 130 live hours of Olympics programming in total, surrounded by in-depth analysis previewing and recapping the competition and highlighted by live coverage of the Men's and Women's Olympic Golf competition (Men's: Thursday, Aug. 11 – Sunday, Aug. 14; Women's: Wednesday, Aug. 17 – Saturday, Aug. 20). In total,

Golf Channel will provide nearly 300 hours dedicated to Olympics programming in August.

"After more than a century, it's wonderful to welcome the game of golf back to the Olympics and we can't wait to bring NBC Olympics' passion for storytelling and level of production to the stunning new Reserva Marapendi golf course in Rio," said Jim Bell, Executive Producer, NBC Olympics. "And as it turns out, we've got an entire NBC Sports division serving the sport's loyal fans with dedicated coverage that will showcase the athletes taking advantage of what could be a one-in-a-lifetime opportunity to represent their country and golf on this global stage."

The International Olympic Committee in 2009 voted to bring golf back to the Olympics for the 2016 and 2020 games, after the sport had been absent in the Olympic program since the men's competition in 1904 and women's in 1900. Athletes will compete on the newly constructed Olympic Golf Course, which was designed by Gil Hanse and Amy Alcott in Reserva Marapendi, located in Rio de Janeiro's neighborhood of Barra da Tijuca. Additionally, Olympic gold

medalists will receive exemptions into all of their respective major championships, including: The Masters, U.S. Open, Open Championship and PGA Championship in 2017 for the men, and the Evian Championship (in 2016) and ANA Inspiration, KPMG Women's PGA Championship, U.S. Women's Open, and Ricoh Women's British Open in 2017 for the women.

Angus Lea Golf Course

- ▶ 9-Hole Golf Course
- ▶ Memberships Available
- ▶ Public Invited
- ▶ 11am to 2pm **Golf Special** Monday-Thursday \$16/9

www.anguslea.com

126 W. Main St. Hillsboro • 464-5404

LODGING



We overlook mountains, golf course, ponds, bridge & river. Golfing Discounts for locals! Stay 3 + nights, 20% off/Mention: InNH! Exit 30 off I-93. 800-227-4454 • www.jackolanternresort.com

WWW.STERLINGGOLF.COM/SHATTUCK

25th Anniversary • Watch for upcoming events!



Maniac Monday — \$35.00 per player

Fridays — 2 Golfers \$80.00

Weekdays — \$45 M-F 18 Holes \$39 after 2:00 PM

All prices include cart

53 DUBLIN ROAD
JAFFREY, NH 03452
603-532-4300

MEMBERSHIPS - JOIN ONE, PLAY BOTH COURSES!

Weekdays — \$36

Twilight - everyday @ 5pm — \$22

Weekends — \$42

All prices include cart



435 SPRING STREET • WINCHENDON, MA 01475
978-297-9897

WWW.WINCHENDONGC.COM

Oak Hill GC

9 Holes • Meredith NH
279-4438



Friendly!
Scenic!
Reasonable!



MINIATURE GOLF

Family Owned & Operated since 1961
Route 12 South of Keene
Beyond Cheshire Fairgrounds
Open 7 Days & Nites from 10 AM
Call 352-6784

19 Holes

\$3.75 per person -
Replays \$.50

Batting Cages

Softball - Baseball

Ice Cream,
Hot Dogs,
French Fries,
Fried Dough
& Drinks

40 flavors of Hard Pack
24 and more of Soft Serve
Frappes • Floats • Sundaes
• Banana Splits

Calendar of Events

Lost River Gorge Evening Lantern Tour

July 1, 2016 8:00 PM \$31.00 per person
1712 Lost River Road, North Woodstock, NH 03262. Phone: 603-745-8031

Lost River Gorge is astonishing by day and is a whole new adventure at night! Boulder caves are lit by lanterns while the boardwalks are lit by headlamps. Guided tours begin at dusk, and are by reservation only as space is limited. Not recommended for children under 5 years old. Please visit our Lantern Tour page for more information.

Scenic Cruises on Lake Winnepesaukee - Fridays are Family Fun Days

July 1, 2016 10:00 AM Adults: \$30, child 5--12: \$15, under 5 free.

211 Lakeside Ave., Weirs Beach Weirs Beach, Laconia, NH 03246
Phone: 603-366-5531

Friday is Family Fun Day aboard the M/S Mount Washington. If you have small children but think the cruise may be too

long for them, on Fridays Monty The Mallard and Mark Shelton will be on board with his special fun entertainment for children. Some Fridays there may be children's authors reading for them and other events that are fun for children.

These events can be found on the website as they get scheduled. From Weirs Beach 10 am and 12:30 PM and from Wolfeboro 11:15 AM. Scenic Cruises daily through late October. From Weirs Beach and other ports on the lake. See full schedule on our website.

Big Bang Independence Celebration Fireworks by the Greater Peterborough Chamber of Commerce

July 2, 2016 6:00 PM. Starts at \$5.00 for walk-ins. ConVal High School Peterborough, NH 03458
Phone: 603-924-7234

The Greater Peterborough Chamber of Commerce invites you to the 2016 Independence Day Big Bang Fireworks Celebration. Join us by car or foot on Saturday, July 2nd to view the 2016

Fireworks Extravaganza on the fields of ConVal Regional High School. Spend your day shopping, sightseeing or playing on the Contoocook River and downtown Peterborough; then make your way to High School for music, food and fun for the whole family! The party starts with live DJ at 6:00 p.m. Then at after dusk, witness an incredible sight as thousands of spectacular fireworks light up the sky shining over Contoocook Valley. For more information, visit the Greater Peterborough Chamber of Commerce website www.PeterboroughChamber.com or follow us on Facebook. For entertainment, vendor, or volunteer inquiries please send information please visit www.peterboroughchamber.com/fireworks Active Duty Military, Retirees, Reservist, Dependents with Military Identification (ID Card), Police, Firefighter, and EMT are FREE! \$5.00 Per Person over 5 years of Age \$20.00 Per Immediate Family \$35.00 VIP Tickets & Parking Package

Fun-Filled weekend at Waterville Valley

July 2, 2016 12:00 PM
\$10 for childrens wristband allowing access to all kids events.
Waterville Valley Town Square

Waterville Valley, NH 03215
Phone: 800-468-2553

Spend the 4th of July weekend at Waterville Valley for a weekend full of excitement for the whole family. Enjoy fireworks, a parade, concerts and lots more. The fun starts on Saturday, July 2nd from 12 p.m. to 4 p.m. with an Independence Day Family Carnival. Children and adults can enjoy games, giant inflatables, tie-dye craft, a 100-foot obstacle course, a barbecue, bounce house, live music by Lil Penney, and more. Admission price allows participation in all the activities throughout the day. Children two and under are free. There is also an additional fee for the barbecue & t-shirt tie-dye. From 6 p.m. to 9 p.m. a free evening concert will be offered in Town Square with music provided by Fatha Groove. On Sunday, July 3rd - starting at 10 a.m. the Squam Lakes Natural Science Center will present a live animal show on Animals with Bad Reputations led by an expert Naturalist. On Monday, July 4th at 11:00 a.m. guests can enjoy a parade marking the nation's independence. Everyone is welcome to walk in the parade, stand along the streets, help with a float, or enter a float in the parade. A free, outdoor concert will take place 6:30 p.m. to



July 1 Opening Reception Gnomes vs. Flamingos

4-6pm • 246 Main Street, Keene

July 30 Wyman Tavern Brew Fest

1-5pm • Wyman Tavern Museum
339 Main St., Keene



HISTORICAL SOCIETY OF CHESHIRE COUNTY
www.hscnh.org 603-352-1895

Bug Baffler®

The Essential Bug Protection



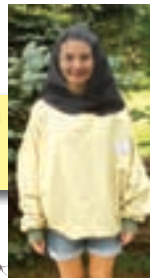
Mosquito/Blackfly Barrier

CONCERNED ABOUT BUG BITES AND THE DISEASES THEY CAUSE?

Protective clothing for
all outdoor activities:

- Gardening
- Beekeeping
- Camping
- Yard Work
- Walking
- Surveying
- Landscaping
- Bird Watching
- Mowing
- Hiking
- Fishing
- Hunting
- Traveling

UV Protection Now Available



email: sales@bugbaffler.com to order call 800-662-8411

"It's like working in your own screen house!"

download 1 page brochure or secure on-line ordering

www.bugbaffler.com

wholesale inquiries invited



Calendar of Events

9:30 p.m. with music provided by The Brad Bosse Band. At 9:30 p.m. the town's fireworks display will take place, viewable from Town Square. For more information regarding next events visit <http://www.waterville.com/events-deals-apres/event-calendar.html>.

Independence Day Celebration with Fireworks

July 2, 2016 9:00 PM
Free Popcorn, Glow Necklaces etc. sold separately. Jackson Village Park Area Rt. 16A, Jackson, NH 03846
Phone: 603-383-9356
Jackson Village & the surrounding communities come together to celebrate Independence Day... join us as we light up the sky with a spectacular fireworks display Saturday July 2nd, 2016 at approximately 9:00 PM. The Fireworks will be going off from our Jackson Village Park and will be easily viewable throughout Jackson Village but we do recommend that you come early to get a good spot. There will be ice cream, popcorn, glow necklaces, balloons and other fun stuff available. For more

information please contact the Jackson Area Chamber of Commerce at (603)383-9356 or visit the website www.jacksonnh.com

26th Annual Rubber Duckie Race

July 4, 2016 4:00 PM. \$5.00 for one duck or 5 ducks for \$20.00. Meredith, NH 03253
Phone: 603-279-6016
Over 4000 rubber ducks tumble down Mill Falls in Meredith, travel under Rt 3 and finish in Meredith Bay. First prize is \$1000.00 with four other top cash prizes followed by 23 prizes donated by local restaurants and merchants. Race is sponsored by the Meredith Lions Club to fund citizens in the community. Ticket sales end by mail on June 30th and race day at the park at 3:30 p.m.

An American Celebration at Strawberry Banke

July 4, 2016 10:00 AM
\$20 for adults; free to children under 17, veterans, military and their families.
14 Hancock Street, Portsmouth, NH 03801
Phone: 603-433-1114

An old-fashioned family Fourth of July at Strawberry Banke outdoor history museum that starts with a US Naturalization Ceremony and offers Old Fashioned Filed Day family games and a Decorated Bicycle Parade at 1:45 pm. Costumed role-players, historic house tours, 300+ years of American history on the 10-acre museum site. NH Gov. Maggie Hassan reads the Preamble to the Declaration of Independent at 1:30 pm.

Fourth of July "Mega-Blast" Fireworks | Fisher Cats vs. Portland Sea Dogs

(Future Red Sox) July 4, 2016 7:05 PM
Game tickets are \$12 when purchased in advance at www.nhfishercats.com.
Northeast Delta Dental Stadium
1 Line Drive, Manchester, NH 03101
Phone: 603-641-2005

The future Red Sox, the Portland Sea Dogs, will celebrate the Fourth of July at Northeast Delta Dental Stadium with a 7:05 p.m. game followed by a spectacular Fourth of July "Mega-Blast" Fireworks Show! Tickets at www.nhfishercats.com.

Gold Prospecting Class

July 8, 2016 9:00 AM Adults: \$75, Children 6-12 \$30 Group rates available. Rte 112

Benton, NH 03785. Phone: 978-609-5303
Ready to find some gold? Learn how to prospect for GOLD in the rivers and streams of New England... and find your own GOLD! • Learn all about gold, where it comes from, and where to find it • Learn panning and sluicing techniques • All equipment included for use that day • Keep all the gold you find! Locations are in New Hampshire but we can also hold classes in other states. Here is a typical class in a nutshell: • We discuss the sources of gold, specifically the area we are in, and how it moves • How to choose a good spot to prospect, reading a river, and good digging techniques • Panning techniques, the most critical step in effective prospecting • Hands on panning instruction • Setting up and running a sluice and gold trap • And of course, finding some gold!

Powwow

17th Annual Intertribal Powwow July 9 & 10. Gates open at 10am. Grand entry at noon. Music, dance, crafts, storytelling, food. More shade provided! Admission free for members and Native Americans. Non-members: \$10 adult, \$5.00 senior/student/children, \$25 family maximum, \$40 family weekend pass. Mt. Kearsarge Indian Museum, 18 Highlawn Rd, Warner, ▶



Discover camping in New Hampshire at Encore resorts!

- Transient, monthly, seasonal and annual sites available
- Close to Salisbury and Hampton Beach
- Exciting activities & events
- Resort style amenities
- Rentals



Sandy Beach RV Resort, Contoocook



Pine Acres RV Resort, Raymond



Tuxbury Pond, South Hampton



855-387-2667
RVontheGo.com



SUPER ACRES

Lyme, NH • (603) 353-9807

- UNSPRAYED BLUEBERRIES
- PICK YOUR OWN

Open Everyday 8^{AM} to 7^{PM} • Call for season opening date/info.

722 River Road • Lyme, NH
just south of the covered bridge



• BOATS • MOTORS • ACCESSORIES • SUPPLIES

HAGGETT'S MARINE, INC.

112 Airport Rd., Concord, NH • 603.224.0171 • www.haggettsmarine.com

Calendar of Events

NH 03278. For more information call 603-456-2600 or see www.IndianMuseum.org

Antique & Classic Automobile Event

July 9, 2016 10:00 AM
\$20 to register your vehicle by June 27th, \$25 afterwards; \$5 spectator fee
Route 171 (455 Old Mountain Road)
RT 171, 455 OLD MOUNTAIN RD.
Moultonborough, NH 03254
Phone: 603-476-5900

Join us for our annual Antique & Classic Automobile Event with a gathering of automobiles from the past at this classic country estate. Come view stunning examples of autos dating from the turn of the century through 1979. Food and beverages will be available for purchase in the Meadows by Shannon Pond, where the show will take place. Spectator admission is included in the price of your Castle Ticket when entering via the Main Gate. For those coming for the event only: Admission for the driver and one passenger is included with each registered vehicle. Spectators who are not coming in a registered car and

who are visiting for the Automobile Event ONLY must enter via Ossipee Park Road and pay a \$5 spectator fee upon arrival. Register your automobile: All production automobiles built before 1980 are welcome! Register by June 27th to receive the early bird rate of \$20 per automobile; registration fees received on June 28th our after will be \$25. You can register online at www.castleintheclouds.org. Participating entrants can enter the grounds beginning at 8 am via Ossipee Park Road off of Rt. 171 / Old Mountain Rd., or the original scenic estate road accessed at the Main Entrance Gate on Rt. 171 / 455 Old Mountain Rd. The 2016 Antique & Classic Automobile Event is sponsored by our premiere sponsor Columbia Classic Cars.

16th Annual HK Powersports Land & Lake Poker Run

July 9, 2016 11:30 AM Free. Donations accepted. 1086 Weirs Boulevard
Laconia, NH 03246.
Phone: 603-366-4341

Travel by land or lake to have fun and win

prizes while raising money for Easter Seals NH! Competitors navigate checkpoints throughout the Lakes Region and receive a poker card at each one. Whoever has the best poker hands at the end wins! Over \$700,000 has been raised for Easter Seals New Hampshire since the event started in 2000. We'll be hosting the party for all the participants after the end of the run with live music and fun – so come join us! Go to nh.easterseals.com for more information about this wonderful family event and to register. Live Entertainment!

Movies on the Green

July 12, 2016 6:00 PM Free
2 Common Court, North Conway, NH
Phone: 603-356-7031

Watch a free outdoor movie with your family on our 16-foot movie screen on Tuesday nights in July & August, starting Tuesday, July 7. Activities start at 6 p.m. and include face painting and special presentations from our local partners. Movies start at dusk and are family films (G or PG). Comfy outdoor lounge chairs are provided for the first 30 guests or bring your own chair or blanket. Movies are weather dependent. Decisions to cancel a screening will be made just before showtime. For the latest information, call

(888) 667-9636 or see our Facebook and Twitter page for updates.

1st Annual Celebration of Handmade in NH Fest

July 15, 2016 8:30 AM FREE
The Mount Washington Cog Railway, 3168 Base Station Road, Marshfield Station, Bretton Woods, NH.
Phone: 617-512-3617

The Mount Washington Cog Railway is hosting its 1st Annual Celebration of Handmade in NH Fest, and its original locomotive (the one that helped build The Cog railway), Peppersass, will proudly be on display as a symbol of handcrafted technology. The Cog is partnering with premier New Hampshire organizations that promote locally made products to celebrate New Hampshire's innovation and finest handmade craft and products. There will be fine craft demonstrations and booths featuring craft made by renowned craftsmen and a variety of food, clothing, jewelry, and more for the perfect Granite State gift. To round out the event, visitors may also view the newly renovated Cog Museum.

5th Annual Rochester Blues/BBQ Festival



OPEN 7 DAYS A WEEK
Mon, Tues, Wed & Fri
10-6pm; Thurs 10-7pm;
Sat & Sun 10-5pm

Free parking along the side of our building

321 Elm Street • Manchester, NH
(603) 606-1736
AntiquesOnElm@comcast.net

www.AntiquesOnElmManchester.com

Explore & Enjoy our Lakes & Rivers!

Fishing, Swimming, or just Relaxing!

Rent a Pontoon on the Connecticut River! Other possibilities too! Powered by Mercury 4-strokes! Canoes & Kayaks Ski Boats Ski, Tube, have fun!



Reservations are required

FAIRLEE MARINE
Route 5, Exit 15 off I-91 Fairlee, VT
www.boatingvermont.com • (802) 333-9745



YANKEE FARMER'S MARKET

Buffalo Farm & Store

Great Meat Package Deals

Buffalo: Burger, Steaks & Ribs
Grass Fed Beef: Ground and Burgers
Pasture-Raised Pork: 1/4 & 1/2

Compost Available! Great for your garden!

Specializing in hormone-free & antibiotic-free meats.
BUFFALO * GRASS FED BEEF * PASTURED PORK * CHICKEN * LAMB * VENISON * ELK

www.yankeefarmersmarket.com

Come Explore the Finest Selection

of Locally Crafted & New England Inspired Gifts



- Gifts • Jewelry
- Foods • Clothing
- Art • And More!

New Artisans every week!
Over 180 Vendors!

Shop anytime at marketplaceneuengland.com

Marketplace  New England
7 N. Main St., Concord, NH
603.227.6297 • www.facebook.com/marketplace-new-england

Calendar of Events

July 16, 2016 11:00 AM
Suggested Donation. North Main Street/
Rochester Riverwalk, Rochester, NH
Phone: 603-330-3208
Carrie Powers Featured Act at Rochester
Blues Festival Rochester Main Street
volunteers will host their fifth annual
Rochester Blues /BBQ Festival on Saturday,
July 16 from 11 am until 4 pm in the North
Main Street/Cochecho Riverwalk area in
downtown Rochester. Underwritten by
DF Richard Energy, this event promises
toe-tapping sounds for all. Guests are
asked to bring a lawn chair and enjoy some
blues experience, the rich history and
soul connections of Blues & Jazz power.
In addition there will several other acts
throughout the day, facepainting, arts,
crafts, and a bounce house. Supported in
part by a grant from the NH State Council
on The Arts and National Endowment for
the Arts. A BBQ Cookoff Contest sponsored
by Leone, McDonnell, & Roberts, PA will
feature local restaurants vying for plaques
in the categories of ribs, chicken, pulled
pork, brisket, and the people's choice award

with a \$100 cash prize. The restaurants
will be offering their BBQ specials for
sale. Those attending may purchase a
\$5 badge that entitles a small portion
sampling and entitling them to vote for the
People's Choice Award, with the proceeds
benefitting downtown promotions.
Vendors, crafts, food and games will
line the upper end of North Main Street
and there is still room to sign up. Vendor
forms are available online at www.rochestermainstreet.org. In addition to the
vendors downtown merchants outside of
the festival area are invited to participate
in sidewalk activities. Artists, crafters, and
vendors are still being sought to participate
in the Festival. Traffic will be detoured
around the upper end of North Main Street
and the bridge via River Street. Alternative
parking for residents and businesses is
available in the Union Street parking lot.

Haunted Lighthouse & Fort Tour in New Castle

July 16. Friends of Portsmouth Harbor
Lighthouses invites you to take part
in a walking tour focusing on stories

of paranormal activity, along with the
fascinating history of Portsmouth Harbor
Lighthouse and Fort Constitution.
Join author and radio personality Ron
Kolek of the New England Ghost Project
and author/lighthouse historian Jeremy
D'Entremont for a rare nighttime walking
tour of Fort Constitution and Portsmouth
Harbor Lighthouse. The sites have been
featured on TV, including the popular
show "Ghost Hunters." You'll hear about
the paranormal investigations at the fort
and lighthouse that have indicated the
presence of a number of otherworldly
residents. Ron will discuss investigation
methods, and Jeremy will fill in the history
behind the ghostly tales.
There will be two tours during the evening
(7:00 and 9:30 p.m.); each tour will last
about two hours. Not recommended for
children under 12. The cost is \$25 per
person. Be sure to bring your camera - you
never know what you might catch! More
information and tickets are available at
www.portsmouthharborlighthouse.org.

Nearer to Nature Walks

July 19, 2016 9:00 AM Cost is \$7/member;
\$9/non-member. 23 Science Center Rd.,
Holderness, NH.
Phone: 603-968-7194

Great for adults and older teens! These
walks focus on Science Center Naturalist,
Margaret Gillespie's recently published
book called Nearer to Nature. The book
walks you through the seasons, delving
into nature's mysteries. Join Margaret to
explore the local flora and fauna at one
or more places. (7/19) Unsworth Preserve
in Sandwich Explore this secluded jewel,
a preserve owned and managed by
the Squam Lakes Conservation Society.
We'll wind our way along an extensive
wetland and through forests in search
of wildlife signs and sounds, checking
for unusual flora. (8/18) Chamberline
Reynolds Memorial Forest, Center Harbor
Access Squam Lake by land, meandering
through upland forest, crossing a swamp
boardwalk, and exploring shoreline
trails at this New England Forestry
Foundation preserve managed by Squam
Lakes Association. (9/3) Squam Lakes
Natural Science Center The Science
Center encompasses 200 acres but many
delightful spots are off trail or seldom seen.
Explore lesser known sites at the Science
Center and conclude with a wildlife visit
from an animal whose relatives roam the
surroundings when all is quiet.

*Enchanted
Lace* A Specialty
Boutique...

Offering a complete line of
decorative lace for the home:
Curtains • Table Cloths
Runners • Doilies • Placemats

Salzburg Square
292 Route 101, Amherst, NH 03031
(603) 673-5223



— OPEN 7 DAYS —
www.enchantedlace.com

**Pick
Your
Own**



**Andorra Forest
Pitcher Mountain**

Wild Highbush Blueberries

\$1.50 per Quart
8:00AM - 8:00PM

Route 123 • Stoddard, NH
(2 miles from Route 10 or
4 1/2 miles from Route 9)
446-3655

Bring Your Own Container

Bartlett's



BLUEBERRY FARM
648 Bradford Road • Newport, NH 03773
(603) 863-BLUE (2583)
— SEASON SCHEDULE —
Varies according to picking conditions
ALWAYS CALL 603.863.BLUE (2583)

Daily Updates on FB/BartlettsBlueberryFarm

Our
32ND
Year

Ask
about
our
Dream
Flights

Aerial Tours starting
\$69
per
person

**SEACOAST
LIGHTHOUSE
AERIAL TOURS**

603-373-8743 • www.seacoasthelos.com
44 Durham Street • Portsmouth, NH




2016 Boston Shoe Travelers Association
Best Footwear Store in New England



BOOT HILL

We can fit your feet and your lifestyle
Over 20,000 pairs of boots and shoes in stock



Tax free
Footwear and
Clothing



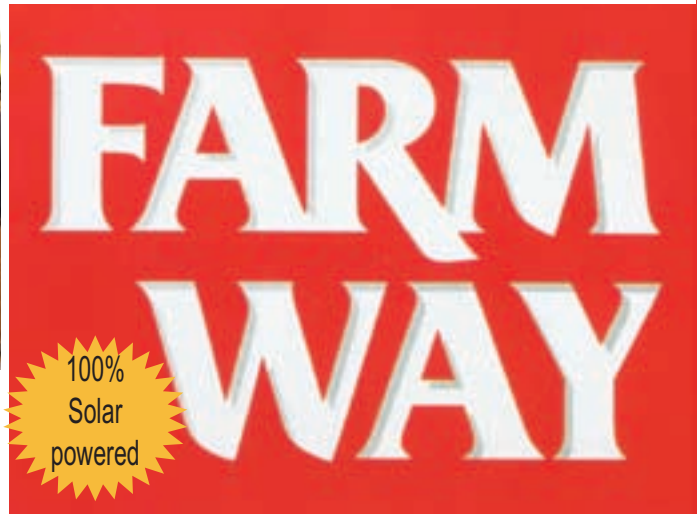
Vermont Maple syrup
\$25.95 1/2 gallon



Join us under the tent every Saturday
for free coffee & homemade doughnuts



For women who like to shop and even men who
don't. Explore 18 acres and 3 buildings



Footwear, clothing, hunting, camping
saddlery, fencing, pet, gardening, furniture,
gifts, jewelry, cookware, food, and more



Canadian recycled plastic furniture
20% off 15 colors to choose from
Maintenance free and windproof



286 Waits River Rd Bradford, VT 800-222-9316 2/10 mile past the only traffic light in the county
Monday- Saturday 8:30-5:30 Friday till 8:00 PM Closed Sundays

72nd Annual
North Haverhill
FAIR
Wednesday - Sunday
July 27-31, 2016

Friday, July 29
8:30 PM on Thayer Stage



Lauren Alaina
From American Idol's
Season 10, with
"Wildflower" &
"Next Boyfriend"

Sponsored by:
Cullenberg & Tensen, PLLC
LAWPOWER.COM
800-371-3506



Saturday, July 30
8:00 PM - Thayer Stage

Hotel California

Sponsored by



Concerts Also Supported By:



Fiesta Shows Ride Specials

Wednesday 5-10 PM - \$20
Thursday 5 - 10 PM - \$25
Friday Noon - 5 PM 30% Off
Sunday Noon - 5 PM - \$25

General Admission \$12
Five Day Admission \$48
Veterans w/ID Day (Wednesday)..... \$5
Senior Day - 65+ (Thursday) \$5
Discount Day (Friday 12-5) at main gate only..... \$8
Children 12 & Under Free
Parking..... Free
Overnight Camping \$25
Overnight Camping w/AC Hookup..... \$30

Concerts & shows are free with paid gate admission!
No alcoholic beverages or firearms allowed.
Not responsible for damage to vehicles on grounds.
No pets allowed on Midway.
Schedule subject to change.
Absolutely no weather related refunds.

5 DAYS OF MOTORIZED ACTION

At the 300' Clay Track in McDanolds Arena
All events free with paid general admission.

WEDNESDAY, JULY 27 Show Time: 7:30 PM

6 & 8 Cylinder Demolition Derby

Sponsored by: FMS NAPA Auto Parts

Mini Van Demolition Derby

Sponsored by: Patten's Gas

THURSDAY, JULY 28 Show Time: 7:30 PM

Green Mt. Tractor Pullers

Sponsored by: **E-Z Steel & Sabil & Sons**

FRIDAY, JULY 29 Show Time: 7:30 PM

4 Cylinder Demolition Derby

Sponsored by: **Dad's 4 By Tool & Supply**

SATURDAY, JULY 30 Show Time: 12 Noon
Farm, Antique & Enhanced Tractor Pull

SUNDAY, JULY 31 - Show Time: 1:00 PM
4x4 Truck Pull

Sponsored by: **Allied Insurance & Pete's Rubbish Removal**

Multiple Shows Every Day



SATURDAY, JULY 30 10:00

SPECTACULAR FIREWORKS DISPLAY

Sponsored By *The Scott Mitchell Family*

Cassidy Timber Harvesting

Hood's Plumbing & Heating

Horne Excavating - Wells River Chevrolet

Timberwolf Rubbish Removal

Bear Ridge Speedway - ROYal Electric

Janice & Albian Estes & Grandchildren

**FOR MORE DETAILS
AND LINKS VISIT:
WWW.NOHAVERHILL.COM
or Check Us out on FaceBook
or Follow Us on Twitter**



THE ORIGINAL
MIDWEEK
IN MANCHESTER
Antiques Show

AUG 10-11, 2016

WED: 1PM-6PM
THUR: 11AM-4PM
Admission: \$15

New Location!

JFK Memorial Coliseum
303 Beech Street
Manchester, NH

Unlimited Re-entry • AC • Free Parking • Handicap Accessible
Close to all NH Antiques Week shows • Café by Alan's of Boscawen
Complimentary shuttles will run between the MidWeek show and the AIM show every 30 minutes from 12pm-6pm on Wednesday, August 10.

Managed by Barn Star Productions • www.barnstar.com
Show Phone: (914) 474-8552 • Office Phone: (845) 876-0616

