

IN New Hampshire

AUGUST 2016

Your Guide to What's Happening in the Granite State

Mud Bowl 2016



EGNWS
Preferred Standard
U.S. POSTAGE
PAID
Permit #130
Portsmouth, NH
Postal Customer

Photo by
Jamie Gametti

FREE See us online at
www.granitequill.com

IN New Hampshire

Your Guide to what's happening in the Granite State!

Leigh Bosse: Publisher

Joyce Bosse: Editor

Christi Macomber:
Advertising Design

Gail Stratos: Publications
Design & Layout, Advertising
Design, Production, Website

Deborah Belanger:
Account Representative

Mary Yuryan:
Account Representative

Also from

The Granite Quill:

The Messenger

In New Hampshire

A guide to what's happening in the Granite State

The HomeFront

A guide for New Hampshire homeowners & home seekers

Granite Quill Publishers

246 West Main St.,
Hillsborough, NH 03244
Phone: 603-464-3388
Fax: 603-464-4106
granitequill@mcttelecom.com

To advertise in next month's issue:

Call Deborah at
800-281-2859



Day Out with Thomas™: The Ready, Set, Go Tour 2016 is pulling into Conway Scenic Railroad

FOR THOMAS' BIGGEST YEAR EVER!

North Conway, NH - Start your engines! Thomas the Tank Engine invites little engineers to team up with him and his best friend Percy for a day of family fun at Day Out with Thomas: The Ready, Set, Go Tour 2016. Children everywhere are invited to join Team Thomas when the #1 Engine and Percy pull into North Conway on July 22-24 & 29-31. Day Out with Thomas: The Ready, Set, Go Tour is presented by Fisher-Price.

Day Out with Thomas is a fun-filled event that provides children of all ages the opportunity to take a ride with Thomas, meet Percy, and participate in Thomas & Friends™ themed activities. The tour,

now in its 21st year, will be in North Conway for two back-to-back weekends. Children and their families are invited to take a 25-minute ride on their favorite engine, meet Sir Topham Hatt, Controller of the Railway, and enjoy a day of Thomas & Friends themed activities.

These activities include unlimited motorcar rides, bouncy houses, mini-golf, engine tours, story-telling, and all there is to do in Imagination Station. Organized and staffed by the Mt. Washington Valley Children's Museum, Imagination Station offers face painting, temporary tattoos, coloring stations, awesome arts and crafts' projects, and Thomas play ▶

VIEWLAND CAMPGROUND

- Seasonal Sites
- Tent Sites
- Trailer Sales & Rentals

Secluded Tent Camping
600 Ft From Lake Winnepesaukee

6 Viewland Ct., Alton Bay, NH
VIEWLANDCAMPGROUND.COM
603-875-7100

edibles,
natives,
ornamentals
& local

Rolling Green Nursery

64 Breakfast Hill Rd.
Greenland, NH • 603.436.2732
RollingGreenNursery.com



at www.ticketweb.com/dowt or by calling toll-free 866.468.7630. For more information and directions, contact Conway Scenic Railroad at 800.232-5251 or visit <http://conwayscenic.com/events/event/ready-set-go-tour-2016>.

Thomas the Tank Engine is the star of Thomas & Friends making tracks to great destinations on PBS KIDS® and Sprout®. Along with his engine friends, Thomas captivates children in more than 300 territories and 40 languages. The number-one blue engine and his friends invite children to enter a world of imagination through the tracks of a train and the words of a story.

About Conway Scenic Railroad

Conway Scenic Railroad is celebrating its 42nd year as a tourist railroad this August. Once part of the Boston & Maine line, the railroad and its Victorian station are an integral part of the history of the region.

For nearly 90 years, passengers, mail, and news arrived and departed through North Conway. Passenger service to Boston ended in 1961, and freight continued until 1972, when the last freight train pulled out of the station. Conway Scenic Railroad restored and reopened the station in 1974 and began providing seasonal excursion train service in the Mt. Washington Valley. Today it remains committed to providing quality family experiences and to preserving New Hampshire's railroad history for all to enjoy.

tables. "Frodo the Walking Tank," a 70-pound Sulcata Tortoise, free roams the area with a handler from Wildlife Encounters, which is based in Rochester.

Thomas the Tank Engine and Percy rides depart every 30 minutes, rain or shine. Departure times for Thomas begin at 9:30 am through 3:30 pm each day

of the event. The 3:30 departures on both Sundays are "autism-friendly." Percy rides depart at 9:00 am through 3:00 p.m. Tickets for Day Out with Thomas are \$20 for ages two and up and include a ride with Thomas. Tickets for Percy are an additional \$10.

Tickets are on sale now and can be purchased

PROFESSIONAL THEATRE - EST. 1933

PETERBOROUGH PLAYERS

The 2nd Half of the 2016 Summer Season

Share in the experience by calling our box office to secure your summer with the Players!



PYGMALION
A comedy by George Bernard Shaw
Aug 3 - Aug 14



Ladies Man
A comedy by Charles Morey
Aug 17 - Aug 28



GOD OF CARNAGE
A comedy by Yasmina Reza
Aug 31 - Sept 11

For more information call our Box office at 603-924-7585 or visit us online at peterboroughplayers.org

Come see why The Wall Street Journal calls us:
"American summer repertory theater at its most accomplished."



A drama by Stephan Wolfert
Sept 14 - 18

THE SECOND COMPANY



SHERLOCK!
Aug 20 - Aug 27

Hike & stay this Summer at Waterville Valley

Set in the heart of New Hampshire's White Mountains, Waterville Valley Resort has easy access to dozens of great hiking trails – and the Black Bear Lodge has a deal that families can hike the Whites and save. Waterville Valley is the perfect jumping off point for family hikes and mountainous adventures. Let us help you make the most of it. Package starts at \$282 or \$70.50 per person, per night for 2 people, with tax & resort fee included. Valid from April 1 to November 30, 2016. Two night minimum required. Prices based on 2 people for 2 nights

The Black Bear Lodge hiking package includes:

- Accommodations in a suite with a 2 night minimum
- Professional hiking maps of the surrounding mountains
- \$25 Bear Bucks to stock up on supplies
- Freedom Pass for all activities

Hikers have been exploring Waterville Valley since the 1800s, when a

group of guests at Greeley's Hotel formed the Waterville Athletic and Improvement Association. The association is still in existence today and continues to oversee the valley's 100 miles of trails, which range from easy walking paths to heart-thumping ascents. Visitors can stroll around Corcoran Pond in the Town Square, wander the woods and search for wildflowers, or hike up the 4,315-ft. summit of Mount Osceola. No matter the location, there's always a view. The Black Bear Lodge is an all-suite hotel with 107 units that comfortably sleep four to eight people.

Waterville Valley, New Hampshire, is a four-season resort set in the White Mountain National Forest, just 2 hours north of Boston. Waterville Valley offers award-winning tennis courts, golf, biking, cultural activities and summer theater, an indoor ice rink, boating, and a skate and bike park. Lodging choices include traditional inns and all-suite hotels, and dining options range from traditional favorites to elegant eateries. There are miles of hiking and mountain bike trails, a pond for swimming and the Recreation Center. For more information www.black-bear-lodge.com/specials.html or 800-349.BEAR (2327).

Two Lead-Poisoned Loons found in New Hampshire

Moultonborough, NH – Two loon deaths from ingested lead fishing tackle have been documented in New Hampshire so far this summer. The first lead-poisoned loon was discovered June 17, 2016, on Long Pond in Lempster, NH. The loon was already deceased when it was found on the shoreline of an island on the pond. Radiographs at Meadow Pond Animal Hospital showed lead tackle in the loon's gizzard, and a necropsy found fishing line and two fishing jigs that tested positive for lead. The bird's body fluids were also tested and showed a high lead level, well above the threshold for clinical lead poisoning.

A second lead-poisoned loon was found on Cold Spring Pond in Stoddard, NH (only miles from Long Pond in Lempster where the first lead mortality was found a few weeks before), on July 6. This male loon had been captured and released on July 1 in the course of routine banding. Blood tests conducted the following day revealed high lead levels, and LPC staff and volunteers began monitoring the pond closely. The loon was found deceased on Wednesday, but it likely died over the weekend. Unfortunately, both loon chicks on the pond also disappeared—one was found dead on Wednesday as well. The chicks may have been killed by an intruding loon while the lead poisoned loon was weakened and unable to defend the territory. A necropsy performed on July 11 showed a lead jig and fishing line in the adult loon's gizzard.

July and August are when lead-poisoned loons are most often found, which correlates with peak lake use and fishing pressure in New Hampshire. The NH Fish and Game Department and The Loon Preservation Committee urge anglers to stop using lead tackle to protect loons and other lake wildlife. Poisoning from lead fishing tackle is the leading cause of adult loon mortality in New Hampshire. The loss of so many adults from this preventable cause of mortality has inhibited the recovery of loons in New Hampshire, according to the LPC. "Because loons do not breed on average until



6-7 years of age and have low reproductive success, it is important that adult loons survive for many years to produce surviving young," said Harry Vogel, Senior Biologist and Executive Director at LPC. These loon deaths come just weeks after the implementation of a new law strengthening the ban on lead fishing tackle in the state. New Hampshire was the first state in the nation to restrict the use of small lead fishing tackle in lakes and ponds beginning in 2000. Subsequent legislation to restrict the use of this tackle in all freshwater in New Hampshire took effect in 2005, and the sale was restricted beginning in 2006. A new law implemented on June 1, 2016, increased protection for loons and other waterfowl banning the sale and freshwater use of lead jigs weighing one ounce or less, regardless of length, adding to the previous ban on lead sinkers one ounce or less.

The Loon Preservation Committee and NH Fish and Game are part of a region-wide initiative called Fish Lead Free (www.fishleadfree.org), which is dedicated to providing resources for anglers to help them make the switch to lead-free tackle. Safe alternatives to lead tackle, made of steel, tungsten, tin, bismuth and many other materials, are effective. Learn more tips and tactics for fishing lead-free at www.wildnh.com/fishing/get-the-lead-out.html. Collection receptacles for old lead tackle can be found at all New Hampshire Fish and Game offices and at The Loon Center in Moultonborough. www.loon.org

The Four Corners Brick House
IN HISTORIC GILMANTON, NEW HAMPSHIRE
Antiques, Reproductions, and Quality Consignment
 Closed Mon. Tues.-Sat. 10-5; Sun. 12-4
fourcornersbrickhouse.com
 525 Province Rd.
 Gilmanton, NH 03237
 267-6949

IN New Hampshire
Your Guide to What's Happening in the Granite State!

To be included in this monthly publication please call Debbie at 1-800-281-2859 or visit www.themessengernh.com

Goffstown Main Street hosts Uncommon Art Festival



Goffstown's Main Street Program is hosting its 8th Annual Uncommon Art on the Common, Saturday, August 6, from 9 a.m. to 3 p.m. The event features the works of over 30 area artists and artisans with booths along the length of Main Street. Local galleries, shops, and cafes also feature artwork and will be open for business throughout the day.

"We invite the public to see how creative their friends and neighbors are," said event organizer, Peggy Hatfield, board member of Goffstown Main Street Program. "There is such talent here, and we're



proud to be able to show it off here on Main Street." There will be painters, photographers, wood turners, fiber and glass artists, and potters for patrons to visit with and purchase from.

In addition, there will be a hands-on portion where guests can show off their own talents. Registrations are still being taken for booth space.

Artists are asked to download a registration packet from www.goffstownmainstreet.org. First-time attendees are asked to submit photographs of their work for peer review. There is a fee for booth space.

General admission to the festival is free, as is parking. Follow the festival on Facebook, or email info@goffstownmainstreet.org for details.

Osborne's Marine LLC

is expanding to meet all of your needs

We now offer heavy truck, equipment, and auto repair and a full service canvas shop.

Three Great Services – One Location!

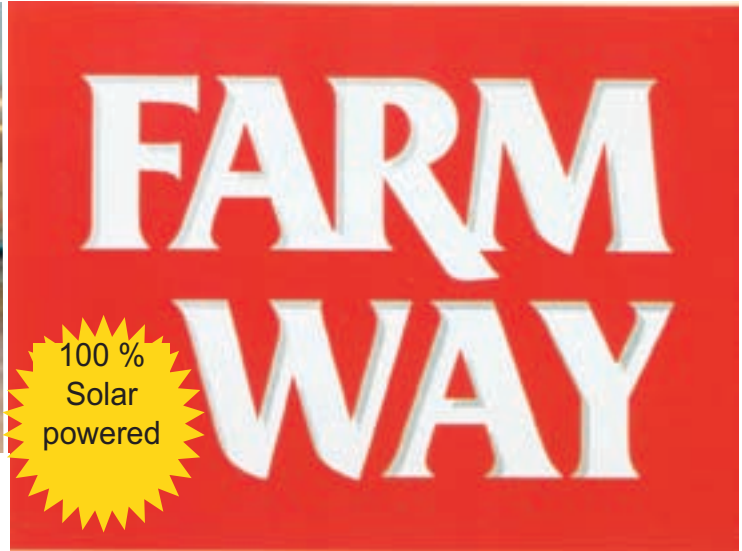
(603) 763-0152

www.osbornesmarine.com

284 ROUTE 11, SUNAPEE, NH



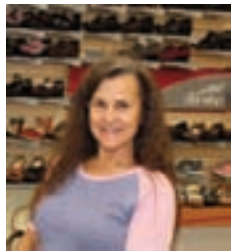
Summer Footwear and Clothing sale
savings up to 20-50% off



Over 20,000 pairs of boots and shoes in stock



Back to school



Fall arrivals daily from the
brands you know and trust
**Tax free footwear
and clothing**



Explore 18 acres
This is not your
typical shopping
experience



286 Waits River Road Bradford, Vermont 800-222-9316
Monday- Saturday 8:30-5:30 Friday night till 8 PM closed Sundays



Fun adventures in the White Mountains

Back to Nature – Take a guided family hike to big views without big effort. Join a naturalist to learn more about the flora and fauna that make the White Mountains so special. Scout for animal tracks and listen for bird calls. Or experience the science of climate and weather on New England's highest peak through interactive exhibits and live video links.

Appalachian Mountain Club, Great Glen Trails Outdoor Center, Weather Discovery Center, Squam Lakes Natural Science Center, and The Trails in the Wood. Fly through the Sky & Climb High - Looking for a fun option this spring? Why not try an exciting adventure that still allows you to enjoy the fresh mountain air. Soar above the forest floor and over rivers, climb across suspension bridges and up hiking

trails – all while enjoying spectacular mountain views. Or harness up and test your rock climbing skills with the help of knowledgeable staff. Alpine Adventures and North Country Climbing Wall.

Shop till you drop - Whether you're looking for NH Made products or bargains at the outlets, it's all tax free! Bella Funk Boutique, Fiddleheads, League of NH Craftsmen, Local Works Marketplace at WREN, Nest of Littleton, Sugar Hill Sampler, Settler's Green Outlet Village, and Tanger Outlet Center.

Tasty Treats – Discover the sweet life by visiting the home of the world's longest candy counter. Check out a maple sugar house and museum filled with maple syrup-making artifacts and area memorabilia. Sample mature cheddar cheese aged

two years and handcrafted chocolate confections. There's something for everyone's taste buds. Bavarian Chocolate Haus, Chutters, Fadden's General Store, Fuller's Sugar House, Harman's Cheese & Country Store, and Kellerhaus Ice Cream, Candy, & Gifts.

Wine Tasting & Brew Tours – New Hampshire's long history of brewing beer dates back to 1635, so we're pretty good at it! Tour a brewery and sample unique recipes inspired by the characteristics of the White Mountains and local flavor. Enjoy taster pours and gourmet wood-fired pizza in a restored 18th century mill on the Ammonoosuc River. Or explore a specialty shop offering artisanal foods and libations, plus Saturday afternoon wine tastings. The Abbey Cellars I & II, Schilling Beer Co., and Woodstock Brewery.

HILLSBOROUGH COUNTY AGRICULTURAL

59th ANNUAL

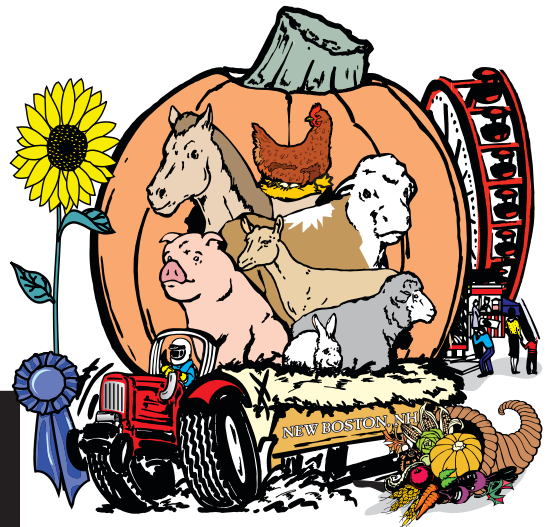
FAIR

SEPTEMBER 9-11, 2016

OXEN, TRUCK & TRACTOR PULLS
MIDWAY OF GAMES, FOOD & RIDES
COWBOY MOUNTED SHOOTERS

Youth Center, Route 13 in New Boston, NH

www.HCAFair.com



\$1.00 Off Admission at the Gate

with this coupon • 1 coupon per person
offer good for admission only
must be presented at time of arrival
good for 2016 Fair only

Mess

Great RedMax & Jonsered Deals at Knoxland Equipment!



KNOXLAND EQUIPMENT

25 Old Warner Lane, Warner, NH 03278
603-746-5260 • www.knoxland.com

Come to the League of NH Craftsmen's 83rd Annual Craftsmen's Fair Aug. 6-14

Drawing more than 25,000 guests and featuring more than 350 craftsmen, along with an incredible variety of handmade fine craft, the League of NH Craftsmen's 83rd Annual Craftsmen's Fair will take place Saturday, August 6, to Sunday, August 14, at the Mount Sunapee Resort in Newbury, NH. The Annual Craftsmen's Fair features a host of new elements this year, including a Tasting Tent, live music, Children's Day at the Fair with kids-focused activities, workshops and performances, and "Lunch and Learn" seminars where guests enjoy lunch with master craftsmen. Recently recognized as a must-see festival by USA Today, the Annual Craftsmen's Fair is known for its high standards and the stunning quality of work of the League's juried craftsmen. With more than 200 booths of fine craft ranging from modern to more traditional styles, guests will be able to explore and shop for colorful pottery, hand-blown glass, framed prints, beautiful bowls, decorative scarves, and handcrafted jewelry.

New features at the 2016 Annual Craftsmen's Fair

Children's Day at the Fair on Wednesday, August 10, features singalongs with singer/musician Amy Connelly, a mime, and face painting.

Tasting Tent offers scrumptious food and drink for sampling. Fuller's Sugarhouse, Cabot Cheese, LaBelle Winery, and King Arthur Flour will participate.

Lunch & Learn participants receive lunch and an opportunity to ask questions and to interact with a master craftsperson or expert.

Live, original music throughout the Fair.

The Artist's Gift: When guests purchase a piece of craft from select craftsmen, a percentage of that item's sale will be donated to the League's Annual Fund and the League Emergency Relief Fund, which supports craftsmen in need.

The Fair includes daily craft demonstrations and workshops, fine craft exhibitions, and entertainment for the entire family.

"Participating in the Annual Craftsmen's Fair is an opportunity for me to connect with people and to share how my craft has transformed my life in positive ways," said Steven Bachmann of White Mountain Essence Didgeridoo in Strafford, NH. Bachmann, who has been a League of NH Craftsmen member for about a year, has been playing and crafting didgeridoo, a wind instrument native to Australia, since 2004.

The Living with Craft exhibit displays more than 200 handcrafted works arranged in a series of vibrant and cohesive room displays. In the CraftWear exhibit, guests will explore traditional and avant-garde jewelry and handcrafted wearables. An outdoor Sculpture Garden features decorative sculptures, furnishings, fountains, and garden accessories. Fairgoers can also purchase the League of NH Craftsmen's 2016 annual ornament, Pitter Patter, a whimsical Rhodium-plated metal elf boot with etched and silkscreened details created by Sussy-Rose Shields.

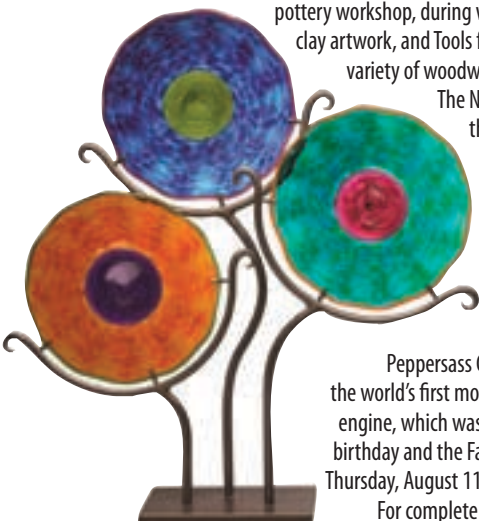
Family Fun & Learning

Along with Children's Day at the Fair, the Fair provides opportunities for children to explore the world of fine craft, including an all-day, hands-on pottery workshop, during which kids will make their own clay artwork, and Tools for Kids, which allows kids to try a variety of woodworking tools in a safe environment.

The Next Generation Tent showcases the work of talented child artists. In addition, children and families can enjoy performances by the Little Red Wagon children's theatre summer touring troupe. The Mount Washington Cog Railway, the Fair's lead sponsor, will once again host an on-site display of the historic

Peppersass Cog Railway train engine that built the world's first mountain-climbing cog railway. The engine, which was built in 1866, is celebrating its 150th birthday and the Fair will celebrate the train's history on Thursday, August 11, with a birthday celebration.

For complete information, visit www.nhcrafts.org.



MORSE SPORTING GOODS

SATURDAY AUGUST 20TH

OPEN HOUSE

9:00AM to 6:00PM

Come Celebrate Our 33rd Year in Business!

- Several Game Camera Models
- Ten Point & Parker Cross Bows
- Quad Rests • Spot Hog Sights
- Tru-Fire Fold Back Release

Blurry sight pins?
Try a clarifier peep sight!

GREAT Door Prizes & Storewide Sales!

SALES up to 80% OFF
on overstock & closeouts

The hottest bows on the market...
Hoyt Defiant, Mathews Halon,
Prime Rise!

Over 100
Bows In Stock!

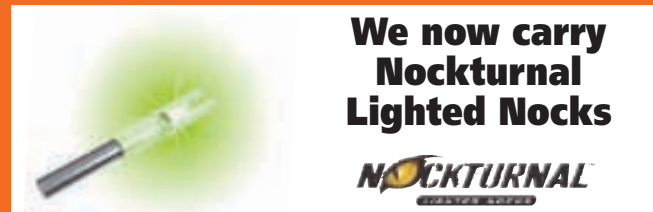


Many Bow Packages at Great Prices!

Rage Broadheads,
Apex & Fuse Sights

WE SERVICE ANY MODEL BOW

T/C & LHR Muzzleloaders and Supplies,
Treestands by: Lone Wolf, X Stand lightest on the market



We now carry
Nocktural
Lighted Nocks

NOCKTURAL
QUICK RELEASE

Bear Hill Cabin & Motel Rentals

85 Contocook Falls Road, Hillsboro, NH

Monday-Saturday 9-6 • Sunday 9-noon

464-3444 • www.morsesportinggoods.com

2nd annual Wyman Tavern Brew Fest set

The Wyman Tavern Museum will host its 2nd annual Wyman Tavern Brew Fest, Saturday, July 30th. The event will feature brewers from New Hampshire, Vermont, Maine, and Massachusetts. It will take place on the grounds of the historic Wyman Tavern Museum at 339 Main Street in Keene and will run from 1 to 5pm. Our 2015 Best in Show winner Mooselick will be on hand to defend their title. Belgian Mare, Champlain Orchards, Moat Mountain Brewery, Shipyard, Woodstock Inn Brewery, Samuel Adams, Traveler Beer Company and Angry Orchard will all be returning this year. New additions to this year's event are The Brewers of Nye Hill Farm, Roxbury NH, Baxter Brewing Company, Lewiston Maine. Additional brewers are still signing up.

Music begins at 1:00 with musical guests Miss Maybell & Slimpickin's followed by the Cold River Ranters. The Stoddard Fire Department, Little Zoe's Pizza of Keene and the Somerset Grill food truck will have food available for purchase.

Tickets are \$25 in advance or \$30 at the door and include a souvenir pint glass and 6 tastings. Tickets may be purchased at the Historical Society of Cheshire County, 246 Main Street, Keene, at Brewtopia, 40 Washington Street, Keene, or at the Historical Society website at www.hscnh.org.



The coveted Wyman Tavern red Brew Fest T-shirts will be on-sale as well as the 2015 collectible yellow shirts, pint glasses and more. Proceeds from the Wyman Tavern Brew Fest will benefit the programs of the Historical Society of Cheshire County.

Designated drivers will be admitted at no charge.



Adventure Transportation will also be on hand to help attendees get home safely.

Thank you to our many sponsors for making this event possible: the Melanson Company, Monadnock Radio Group, Clarke Distributors, Amoskeag Beverages, Bull Dog Design, Green Mountain Tap Handles, Monadnock Tent and Event, Brewtopia, Filtrine Manufacturing, Gem Graphics, Keene Eye Care, Moat Mountain Brewery, Great Brook Media, Little Zoe's Take and Bake Pizza, Somerset Grille, The Brewers of Nye Hill Farm, Champlain Orchards and Woodstock Inn Brewery.

DUNCKLEE

Timberframe and Boat Works LLC

Duncklee Timberframe and Boatworks provides custom built structures and small boat building & restoration.



• *Located in New Hampshire* •

All of our projects are crafted with family heirloom antique tools, and built with strict attention to detail.



Irish Songs and Shenanigans at Nashua Library

Shanacchie, the Irish singing duo of Pat Heffernan and Patrick Keane, will perform songs old and new, accompanied by stories and shenanigans, at the Nashua Public Library on Thursday, August 4, at 7 p.m.

Opening for Shanacchie at 6:30 p.m. will be Trash Talk, the Nashua Community Music School's percussion ensemble.

The event is part of the library's Summer Concerts on the Plaza series. Bring a blanket or a lawn chair and enjoy free music. In the event of rain, the concerts are held indoors in the library theater.

The final concert in the series features pop, rock, and folk music from the Bill McGoldrick Acoustic Duo on Thursday, August 11, at 7 p.m.

The library is located at 2 Court Street, Nashua. For directions and parking information go to www.nashualibrary.org/visit/directions. For other information contact Carol at carol.eyman@nashualibrary.org or (603) 589-4610.



The Irish singing duo Shanacchie (Pat Heffernan, left, and Patrick Keane, right) will perform on the Nashua Public Library Plaza on August 4 at 7 p.m.

Summer shopping
that's a breeze



WHITE MOUNTAIN HWY, NORTH CONWAY, NH
settlersgreen.com



Crabtree & Evelyn

J. CREW
FACTORY

WILSONS LEATHER

CHICO'S
OUTLET

PARKER'S MAPLE BARN

One of New Hampshire's Top Restaurants

Featured in Yankee Magazine's
Editor's Choice Award —



Best Place to Visit
2013, 2014, 2015, 2016



NH Magazine's
Reader's Choice Award for
Best Pancakes
2013, 2014, 2015



IN OUR EXPANDED GIFT SHOP AND COUNTRY STORE...

- Native American Arts & Crafts
- Lots of Affordable Jewelry
- Tons of Maple Products & Gift Baskets
- Mail Orders Available
- We Ship Anywhere

MASON, NEW HAMPSHIRE

(only 3 miles off Route 13) Call for Best Directions

(603) 878-2308 or 1-800-832-2308

Restaurant & Gift Shop Hrs:
Mon.-Fri. 8^{AM} - 2^{PM}; Sat. & Sun. 7^{AM} - 4^{PM}

Visit our online store!

For more info: <http://www.parkersmaplebarn.com>



2016 Mud Bowl to celebrate theme of "Animation Fun! It all started with mud!" Sept. 9-11

NORTH CONWAY, NH - Mud Bowl, the championships of mud football, will celebrate a theme of "Animation Fun! It All Started with Mud" as part of Mud Bowl Weekend, the championships of mud football, Sept. 9 through 11.

The theme will be used by participants in the team and the open class for the 34th Tournament of Mud Parade, set for North Conway Village's Main Street Saturday, Sept. 10, at 10 a.m. Look for teams to play with such themes as "Mud Minions," "Frozen Mud," "The Lion (Mud) King," "Muddy Toy Story," "Muddy Monsters, Inc.," "Mud Duck Tales" and "A Muddy Tribute to Walt Disney."

Sponsored by Amoskeag Beverages of Bow, overall sponsors of Mud Bowl, the parade also features an open class.

Games in the double-elimination tourney are played at Steve Eastman Memorial Field at Hog Coliseum Friday through Sunday, with the finals on Sunday. Cheerleaders, kids activities and food are featured.

Proceeds benefit local charities, with more than \$870,000 having been raised since the first games were played locally in 1976. The games feature two-hand touch football, played in knee-deep mud, with seven players per side.

Ten teams from throughout New England play, including the defending 19-time champion Muddas Football Club of Amherst, N.H., who defeated seven-time defending champion Nashua Mud Gumbys of Nashua, N.H., 2-0, in the lowest-scoring finals ever.

Other teams include the hometown 11-time champion Mount Washington Valley Hogs and the 2013-champion North Country Crocs.

Other squads include the Carrabasset Valley Rats of Kingfield, Maine, originators of the sport of mud football back in 1972; the 2005 champion North Shore Mudsharks of Beverly, Mass.; the 2001 champion Mudcats of Franklin, N.H.; the Cumberland Muckaneers of Cumberland, R.I.; the Mud Ducks of Rowley, ▶



Mass.; and Jack's Predators of Peabody, Mass.

ADVANCE TICKETS

Three-day tickets are \$15; day tickets are \$6 ages 14 and up, and \$4 ages 6 to 13; family tickets (two adults, two children) are \$15 per day. Advance tickets can be purchased at the North Conway Community Center, the Vaughan Learning Center (formerly known as North Conway Day Care), Mount Washington Valley Chamber of Commerce, all in North Conway, and Home Run Sports Training Center on Hobbs Street in Conway.

Three-day tickets serve as entry to two \$500 prize drawings held Saturday and Sunday (one need not be present to win). For further information, call Ryan Sommer at the North Conway Community Center at (603) 356-2096 (northconwaycommunitycenter.org), or the Mount Washington Valley Chamber of Commerce at (603) 356-5701. You may also follow them on Facebook at Mt. Washington Valley Mud Bowl or at Mud-Bowl.org



STRAWBERRY BANKE MUSEUM

Portsmouth, New Hampshire

In the Montrone Family Gallery, Thales Yeaton House. Open daily May 1 through October 31. Included with regular admission.

This exhibit at Strawberry Banke Museum focuses on the maritime history of Portsmouth NH and the Seacoast, showcasing a collection of models and paintings of ships built in Portsmouth and the stories of the people who built and sailed them.

Eight beautifully-crafted models of Portsmouth-built sailing ships form the centerpiece of the exhibit and trace the urgency of the American Revolution, the history of the Triangle Trade and the knife's edge balance of the Civil War. Paintings and historical artifacts once owned by ships' masters and builders add insight into life in maritime Portsmouth.



14 Hancock Street
Portsmouth NH 03801
603.433.1107
StrawberyBanke.org

LEARN FROM THE PROS



Fisher Cats
BASEBALL & SOFTBALL CAMPS

Aug. 1, 2, & 4, 5
Aug. 15-19



HITTING



PITCHING



FIELDING



THROWING



T-SHIRT



TICKET



AUTOGRAPHS

REGISTER AT: NHFISHERCATS.COM

FREE FOOD

with the purchase
of four tickets



online only,
promo code:
FREEFOOD



courtesy of



NORTHEAST DELTA DENTAL
STADIUM



vs.



LAST CHANCE TO SEE THE FUTURE RED SOX

SEPT. 2-5

NHFISHERCATS.COM  603.641.2005

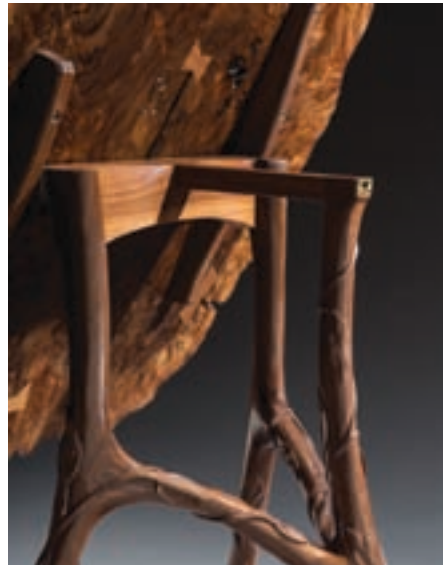
Canterbury Shaker Village hosts Village Rising August 6

A day of exploration, inspiration and creativity features exhibit opening, dance performances, and special programs and tours

Canterbury Shaker Village will host Village Rising on Saturday, August 6, 2016 from 10:00 am to 5:00 pm. The day-long event celebrates the modern impact of the Shaker legacy through a new installation of the mixed media exhibit, Shaker Traditions: Contemporary Translations, special tours and programs. All activities are included with regular museum admission.

Shaker Traditions: Contemporary Translations features creative works in an original mixed media exhibit that reveal how the Shakers' traditions, designs and spirituality continue to permeate and influence our contemporary lives. Exhibit curator and Village Executive Director, Funi Burdick will lead a gallery talk during the day and there will be a reception to meet the artists at 3:00pm.

The schedule of special programs during the day includes "Rising & Rotating," performances by emerging companies, choreographers and student groups as well as established dance artists, including Mariah Rasmussen, Grant Jacoby, Amanda Hinchey, Jessica Howard, Emily Jerant-Hendrickson, Wisty Andres, Shriya Srinivasan and Ballet Misha.



"Rising and Rotating" will include "Hearth" a film and dance installation by Emily Beattie. Hearth is an immersive installation that uses black and white film and dance to invoke the creative spirit in daily tasks. Hearth locates an inner fire that drives exploration firmly in the domestic space. Also included will be a performance of Sarah Duclos and Neoteric Dance



Collaborative's "Agape/Wonder." Other highlights of the day include: "The Shakers as Photographers," guided tour of special places that the Shakers loved to photograph

"1,000 Paper Cranes for Peace," in commemoration of Hiroshima Day, which marks the 71st anniversary of the bombings

"Wagon Rides Through the Landscape"

"Inspiration in the Garden" with Stacey Cooper, Shaker Organic Garden Manager

En Plein Air art activities for children and families

Other upcoming events at Canterbury Shaker Village include the Let Freedom Ring Tour on August 28; Canterbury Artisan Festival on September 17; Vintage Car Show on October 15; and Ghost Encounters on October 22. To view the complete 2016 calendar of events visit www.shakers.org.

**LIVE LOBSTERS HARD AND SOFT SHELL
BAKED | FRIED | BROILED | GRILLED | BLACKENED SEAFOOD
STEAKS | CHICKEN & MORE | HARD & SOFT ICE CREAM!!**

PETEY'S
Summertime Seafood & Bar

**FROM OUR BOAT
TO YOUR PLATE!**

1323 Ocean Blvd, Rte 1A, Rye, NH 603.433.1937 www.petey.com
ON THE WATER | OPEN YEAR ROUND | OCEANVIEW DECK MAY-SEPT, WEATHER PERMITTING

Sandwich Open Barns: Lecture & Tour, Sat., Aug. 20

A Day of Barn Exploration with the Experts
What: Lecture & self-guided tour of seven historic barns in Sandwich, NH

When: Saturday, August 20, 10am to 4:30pm. Registration opens at 9:30am.

Where: Convene at the Sandwich Town Hall, Center Sandwich, NH

Cost: \$30 for members of partnering organizations; \$40 for non-members; \$5 discount if purchased by August 15. Optional boxed lunch \$10 (must be purchased by August 15). For more information or to register: call 603-224-2281 or email bt@nhpreservation.org.

Presented by: New Hampshire Preservation Alliance with partners Sandwich Historical Society, and Sandwich Barn Preservation Committee.

Enjoy a day of historic barns, scenic landscapes, and local history in the hills of central New Hampshire. Sandwich has a wealth of historic agricultural buildings and seven distinctive examples will be showcased at a barn tour on Saturday, August, 20th.

The event kicks off at 10 am with "The History of Agriculture as Told by Barns," an illustrated

lecture presented by John Porter, co-author of *Preserving Old Barns*, followed by a brief introduction to the region's agricultural history by Sandwich Historical Society board member Jim Mykland. A self-guided tour of seven Sandwich barns will follow the lecture and run from 12 - 4:30 pm. A barn expert will be on hand at each barn to talk about architectural features, framing styles, and agricultural uses. Five of the featured structures are included in the statewide Barn Tax Incentive Program (RSA 79-D), which authorizes municipalities to grant property tax relief to owners who can demonstrate the public benefit of preserving their agricultural buildings, and agree to maintain them throughout a minimum 10-year preservation easement.

Highlights of the tour include a large gambrel roofed barn on a 1920s gentleman's farm that was used as a patent museum in the 1940s, an 1830s working barn once owned by actor Claude Rains, of *Casablanca* fame, and a recently restored 1885 windmill used to pump water on the former Isaac Adams Estate. Adams was a distant cousin of President John Adams and the inventor of the Adams Press which

revolutionized the printing industry.

Attendees will also have the opportunity to tour the Sandwich Historical Society's Quimby Barn Museum which houses the Sandwich Concord Coach, as well as the Society's c. 1850 Elisha Marston House Museum.

"Barns are disappearing from our New Hampshire landscape," said Beverly Thomas, Preservation Alliance program director and tour coordinator, "and we want to increase appreciation for them and encourage their preservation. It's gratifying to see that so many of these Sandwich barns continue to dot the landscape and are being used in some way by their owners today." She believes that Sandwich has one of the highest numbers of barns of all towns in NH.

Cyclists are welcome too! Enjoy a more intimate experience of the back roads of Sandwich by cycling from barn to barn along lightly traveled paved and well-maintained dirt roads. The ride offers beautiful vistas of the Sandwich and Ossipee Ranges, passes through the Lower Corner Historic District, a National Register District, and provides the opportunity to take a side trip up the Historic Sandwich Notch Road, passing by the ▶

Drive, Tour & Explore MOUNT WASHINGTON
Find adventure at every turn on the legendary Mt. Washington Auto Road

BOOK YOUR GUIDED TOUR ONLINE
SAVE \$5
PER PERSON
24 hrs ahead
MtWashingtonAutoRoad.com


ELEVATE YOUR ADVENTURE

1 Mount Washington Auto Rd, Route 16, Gorham, NH
(603) 466-3988 • MtWashingtonAutoRoad.com

THIS CAR CLIMBED
MT. WASHINGTON