

IN **New Hampshire**

SEPTEMBER 2016

Your Guide to What's Happening in the Granite State



Photo courtesy of
Monadnock Humane Society

FREE See us online at
www.granitequill.com

ECWSS
Presorted Standard
U.S. POSTAGE
PAID
Permit # 130
Portsmouth, NH
Postal Customer

IN New Hampshire

Your Guide to what's happening in the Granite State!

Leigh Bosse: Publisher

Joyce Bosse: Editor

Christi Macomber:
Advertising Design

Gail Stratos: Publications
Design & Layout, Advertising
Design, Production, Website

Deborah Belanger:
Account Representative

Mary Yuryan:
Account Representative

Also from

The Granite Quill:

The Messenger

In New Hampshire

A guide to what's happening in the Granite State

The HomeFront

A guide for New Hampshire homeowners & home seekers

Granite Quill Publishers

246 West Main St.,
Hillsborough, NH 03244

Phone: 603-464-3388

Fax: 603-464-4106

granitequill@mcttelecom.com

To advertise in next month's issue:

Call Deborah at
800-281-2859

Awards ceremony to honor Compassionate Citizen of the Year at Monadnock Humane Society

Monadnock Humane Society invites the community to our Paws 4 Celebration event and Annual Meeting & Awards Ceremony on Saturday, September 10th in the MHS Guinane Training Center at its Swanzey facility. The party - Paws 4 Celebration - begins at 3:00, and offers a variety of fun things to do including games for children, free raffle drawings, and an opportunity to visit with the adoptable animals. It's also an opportunity to meet our new Executive Director, Kathy Harrington. Everyone from the Monadnock Region and beyond is invited - children are encouraged to attend. Admission is free, cupcakes, snacks and beverages will be served, and there's plenty of parking.

The afternoon continues with our Annual Meeting & Awards Ceremony, which begins at 4:00 pm. The Awards Ceremony will honor three individuals - Compassionate Citizen of the Year, Outstanding MHS Employee and Outstanding MHS Volunteer.

The Outstanding MHS Volunteer of the Year and the Outstanding MHS Employee of the Year are nominated by the MHS Volunteers, Board of Directors, and Staff. The MHS Compassionate Citizen of the Year is awarded to a person in our community for notable acts of kindness and compassion aligned with the MHS values. Nominations are accepted from those in our community now through September 2nd. To nominate someone you know from the Monadnock Region, go to the MHS website for guidelines (www.monadnockhumanesociety.org).

Event Information:

PAWS 4 CELEBRATION and ANNUAL MEETING & AWARDS CEREMONY

Saturday, September 10th

3-4 pm - Paws 4 Celebration Party

4-5 pm - Annual Meeting & Awards Ceremony

MHS Guinane Training Center

101 West Swanzey Road

Swanzey, NH 03446

Guitarist Steven Hancoff in From Tragedy to Transcendence

New Hampshire Theatre Project kicks off their 28th season with guest artist Steven Hancoff in the extraordinary multi-media performance *From Tragedy to Transcendence: Bach, Casals & the Six Suites for Cello Solo*. Guitarist Steven Hancoff served as Artistic Ambassador for the US State Department from 1993 to 2008, representing the United States through music all over the world - to almost 50 different countries. His current performance, touring throughout New England this fall, tells an incredible saga through music, visual art and video - the story of Johann Sebastian Bach's masterpiece *Six Suites for Cello Solo*.

While pursuing a life passion to transpose Bach's *Six Suites for Cello Solo* to guitar, Steven Hancoff uncovered a remarkable story. Johann Sebastian Bach, an orphan born into poverty, transformed himself into the greatest virtuoso of his time, but died with his life's work virtually unknown. Bach's great compositions were brought to the world's attention by Felix Mendelssohn, but many of them - including the *Cello Suites* - were lost. And then "in a kind of cosmic accident of unfathomable serendipity," 13-year old cellist Pablo Casals discovered the *Suites* in a Barcelona thrift shop. To share this remarkable saga, Steven Hancoff uses storytelling, Bach's glorious music, and a magnificent tapestry of classic and contemporary visual art.



From Tragedy to Transcendence is touring throughout New York and New England, with only one performance on the New Hampshire seacoast. Don't miss this rare opportunity to experience an incredibly rich multimedia exploration of Bach's *Six Suites for Cello Solo*, performed by a master guitarist. Deeply insightful, eloquent and musically formidable, Steven Hancoff has created a timeless work -- timeless like the music of Bach itself.

From Tragedy to Transcendence: Bach, Casals & the Six Suites for Cello Solo

Saturday, September 10, 2016 - 7:30 pm.

New Hampshire Theatre Project/WEST
Reservations are highly recommended.

Call 603-431-6644 ext. 5 or email reservations@nhtheatreproject.org

General Admission \$28, Student/Seniors, \$24

North Conway named among America's favorite mountain towns

North Conway, NH – Travel + Leisure's Magazine readers had the chance to evaluate hundreds of locales in the 2016 America's Favorite Places survey, and they have chosen North Conway, NH as the only New England mountain town in the list of top 15 Favorite Mountain Towns. While plenty of Rocky Mountain and far West towns were named, according to Travel + Leisure's editors, it's the "storybook town center" of North Conway that readers love.

In the annual Travel + Leisure's "America's Favorite Places" survey, readers of all ages and locales were asked to evaluate hundreds of cities and towns across a range of categories. Questions on the survey ranged from the friendliness of the locals to the quality of the pizza. According to the magazine, "Unlike Travel + Leisure's World's Best Awards, which encourages readers to weigh in on travel experiences across the globe, the America's Favorite Places survey is a way for locals to share what their hometowns do best". When it came to New England Travel + Leisure readers conveyed that North Conway stood out among the rest, naming it the only new England or Mid Atlantic town to make the top 15 list.

When it comes to North Conway, here's what readers said and Travel & Leisure editors wrote: "Travel



+ Leisure readers appreciate the storybook town center, with a white-steepled church, a turreted train station from the 1870s, and a New England general store, Zeb's (don't leave without stocking up on fudge). When it comes to mountain escapes, it's clear they're looking for more than just access to a ski lift or a pretty view. Some readers want history: a Rocky Mountain mining town reborn as a luxe resort, or a storybook New England village [like North Conway]"

North Conway is no stranger to accolades. In 2015 North Conway, NH was named to the Best of the

US 2015 list by Lonely Planet Guide authors. The Best in the US 2015 destinations are ten places in the US that Lonely Planet authors and travel experts think travelers should add to their wish lists for the coming year. USA Today's 10 Best Ski Towns list also included North Conway last winter coming in in the #2 place. For two years in 2012 and 2013 when TripAdvisor completed its annual survey of affordable ski towns, North Conway was named the most affordable ski town East of the Mississippi. And in 2012 National Geographic named North Conway among the 25 top ski towns worldwide. Yankee Magazine has also given North Conway recognition as being one of New England's best winter towns too. "Each time

North Conway and Mt Washington Valley appear on one of these lists, it helps to seal our destination's allure in the travelers' minds," commented Janice Crawford, Executive Director of the Mt Washington Valley Chamber of Commerce. "We are grateful each time we see our name in lights on these Top 10 lists," finished Crawford.

To learn more about North Conway and the surrounding Mt Washington Valley, NH, go to www.mtwashingtonvalley.org or call 1-800-DO-SEE-NH. To plan a trip to New Hampshire, visit www.VisitNH.gov.

Greater Somersworth Chamber of Commerce Presents



Food Concessions
Beer Tent
Quality Crafts
Souvenirs

SATURDAY, SEPTEMBER 17, 2016

The Pavilion at Somersworth High School

11 Memorial Drive, Somersworth, NH 03878 - 10:00 a.m. - 6:00 p.m.

👉 **Zink & Company (MA)**

👉 **Lonely Heartstring Band (MA)**

👉 **Blistered Fingers (ME)**

👉 **The Zolla Boys (CT)**

\$20 Now, and \$25 at the Gate

Gate opens at 9 a.m. Bring lawn chairs & blankets. Enjoy lively Bluegrass music out in the open or under a tent. Kids under 12 attend FREE when accompanied by an adult.

No Alcohol, Coolers or Dogs • Rain or Shine Event | No Refunds

www.HilltopCityBluegrass.com

Conveniently located in
Downtown Concord.....



... a quintessential
New England town!

- Recently Renovated Guestrooms (June 2016)
- On-Site Restaurant, Lounge & Room Service
- All rooms have a refrigerator, microwave & a 42" Flat Screen TV
- Largest Indoor Hotel Pool in Concord with a Hot Tub & Fitness Center
- Pool Memberships and Pool Parties
- IHG Rewards Club
- Walking Distance to Downtown Concord: <http://www.intownconcord.org/>



Located inside the Holiday Inn



Serving Breakfast
&
Dinner Daily



172 North Main Street • Concord, NH • (603) 224-9534
www.ihg.com/holidayinn/concordnh/ / www.ejsonmain.com

12th Annual Friends of the South End Fairy House Tour Sept. 24-25

Discount Advance Tickets for 12th Annual Friends of the South End Fairy House Tour now on Sale:

Proceeds of event benefit Strawberry Banke, Prescott Park Arts Festival, Governor John Langdon House, Prescott Park and Portsmouth Elementary Schools

PORTSMOUTH, NH: Discount advance tickets are now on sale for the 12th annual Friends of the South End (FOSE) Fairy House Tour. The event will take place this year on September 24 and 25, 2016 and the proceeds of this long standing collaborative community event benefit Strawberry Banke, Prescott Park Arts Festival, the Governor John Langdon House, Prescott Park and the Portsmouth Elementary Schools. Since the Fairy House Tour began, FOSE has reinvested more than \$250,000 in these important South End organizations and in the Portsmouth community as a whole.

The Portsmouth Fairy House Tour is the world's largest fairy house tour and features more than 200 handcrafted fairy houses made by local artists, florists, garden clubs club members, businesses, families and local school children. Anyone interested in building a fairy house for display can sign up until August 15 at www.portsmouthfairyhousetour.com.

Advanced tickets are \$25 per family, \$12 per adult, \$8.00 per senior and \$4.00 per child ages 3-12. Tickets purchased on the day of the event are \$15.00 per adult, \$10.00 per senior, \$5.00 per child ages



"Heart Light" by 2015 Artist Invitational Winner Nancy Zechel. Photo Credit: Caroline Piper

3-12, and \$30 for families of two adults/ two children or one adult/ four children.

Tickets can be purchased online at www.portsmouthfairyhousetour.com or at the following Portsmouth retailers: Discover Portsmouth, Flower Kiosk, G. Willikers Toy Shop, Pickwick's Mercantile, Strawberry Banke Museum Visitor Center, and Treehouse Toys.

Fairy House tickets include full admission to all the Strawberry Banke Museum historic houses and to the Governor John Langdon House.

Inspired by local author Tracy Kane's Fairy Houses Series®, and produced by Friends of the South End with the assistance of Canoe Harbor Consulting, the annual Fairy House Tour attracts more than 8,000

families and fairies each year. The event is sponsored by Pickwick's Mercantile, Parenting NH, Infinite Imaging (design & print sponsor), Geno's Sandwich and Chowder Shop, Piscataqua Savings Bank, Rolling Green Nursery, Sandra Dika, Keller Williams Coastal Realty and Sander's Fish Market.

Tracy Kane will be on hand both days of the Tour to greet ticket holders and sign autographs. In addition, visitors can expect to see performances by the Southern New Hampshire Dance Theater and the NH Theatre Project.

For more information about the 2016 Portsmouth Fairy House Tour, to sign up to build a fairy house or to purchase tickets, please visit www.portsmouthfairyhousetour.com.

About Friends of the South End

The Friends of the South End (FOSE) is a nonprofit corporation in the South End of Portsmouth, NH. FOSE's mission is to foster a cooperative, neighborly spirit; encourage preservation of the neighborhood's historic character; promote public safety; monitor and disseminate information about important developments in Portsmouth and the South End; and protect and enhance the quality of life in the South End. Membership is open to others who share the goals of the organization. For more information or to become a member, please visit www.friendsofthesouthend.org.

MT. KEARSARGE INDIAN MUSEUM

One Circle, 1000 Stories. Experience It!

Harvest Moon & NatureFest September 25, 10am-4pm

Fun for the Whole Family!

Glooscap/Kluskap of the Wabanaki

Paintings by Maliseet artist Dozay
In the Contemporary Art Gallery
through September



Sept. event calendar packed with music, mud football & more

North Conway – Looking for one easy place to find sports competitions in Mt Washington Valley? Go to www.CompeteMWV.com for a directory of all the exciting sports events in the Valley.

SEPTEMBER EVENTS

September 1, 8, 15, 22, 29, October 6:

Salomon Fall Trail Run/Walk Series at Great Glen Trails: This weekly trail race series for all abilities and ages takes place every Thursday for six weeks. www.greatglentrails.com/events/fall-trail-running-series/.

September 2: Summer Mountain Bike Easement Exploration Series: The Upper Saco Valley Land Trust is gearing up for a busy summer of fun, free, outdoor adventures. Tonight's ride: Black Cap Mountain. Meet at Cranmore for an advanced ride on Red Tail and Kettle Ridge Trails. 5:00 pm start, the trails will be on advanced terrain with lots of steep climbing and rocky & rough descending. Info: www.usvlt.org/easement-exploration-series.

September 2-5: Labor Day Sidewalk Sales at Settlers Green/Settlers Crossing: Save even more on apparel, housewares and back to school items. Info: <http://www.settlersgreen.com/calendar/20/237-Labor-Day-Sidewalk-Sale>

September 3, 10, 17, 24: North Conway Farmer's Market: Join farmers, artisans and specialty food purveyors to purchase everything from jams to produce, chocolates, fresh baked goods and more. It

all takes place 9:00am – noon every Saturday at the North Conway Community Center. Info: <http://www.nocofarmersmarket.org/>.

September 3-4: Gibson Center Craft Fair: A Labor Day tradition; local artisans and crafters display and sell handmade gifts, foods and more on the lawn at the Gibson Center in North Conway, NH. Info: 603-356-3231.

September 5: Memorial Hospital's 5K Fun Run at Story Land: Kids, race your way around Story Land. Registration is \$10/child. Registration begins at 8:00am on Race Day, races start at 8:45am sharp. Benefits Believe in Books Literacy Foundation. Info: <http://www.believeinbooks.org/kids-fun-run-at-story-land.html>.

September 9-10: Muster in the Mountains: A two-day colonial encampment of re-enactors representing various individuals of the French and Indian War, Revolutionary War, and Mountain Man periods from 1750 through 1840 at the Mt Washington Auto Road. This event is free and open to the general public. Friday and Saturday from 10am – 4pm. Registration required. Info: www.mtwashingtonautoroad.com/events/muster-in-the-mountains.

September 9-11: Mud Bowl 2016 & Tournament of Mud Parade: Mud Bowl, the championships of mud football, will celebrate a

theme of "Animation Fun. The theme will be used by participants in the team and the open class for the 34th Tournament of Mud Parade, set for North Conway Village's Main Street Saturday, Sept. 10, at 10 a.m. Games in the double-elimination tourney are played at Steve Eastman Memorial Field at Hog Coliseum Friday through Sunday, with the finals on Sunday. Cheerleaders, kid's activities and food are featured. Proceeds benefit local charities, with more than \$870,000 having been raised since the first games were played locally in 1976. Three-day tickets are \$15; day tickets are \$6 ages 14 and up, and \$4 ages 6 to 13; family tickets (two adults, two children) are \$15 per day. Info: Call Ryan Sommer at the North Conway Community Center at (603) 356-2096 (northconwaycommunitycenter.org), or the Mount Washington Valley Chamber of Commerce at 356-5701.

September 10: Pitch Pine Challenge Triathlon at White Lake State Park: Both sprint and Olympic distance courses offered, plus a Splash and Dash and Aquabike option too. Swim, Bike, Run in and around White Lake State Park, Chocoura and Tamworth. Info: <http://www.pitchpinetri.com>.

September 16-18: 3rd Annual Fungal Foray Weekend at World Fellowship Center: New-to-the mushroom world? Learn to protect mushroom habitat and to enjoy, identify, cook, appreciate and ▶

**LIVE LOBSTERS HARD AND SOFT SHELL
BAKED | FRIED | BROILED | GRILLED | BLACKENED SEAFOOD
STEAKS | CHICKEN & MORE | HARD & SOFT ICE CREAM!!**

PETEY'S
Summertime Seafood & Bar

**FROM OUR BOAT
TO YOUR PLATE!**

1323 Ocean Blvd, Rte 1A, Rye, NH 603.433.1937 www.petey.com
ON THE WATER | OPEN YEAR ROUND | OCEANVIEW DECK MAY-SEPT, WEATHER PERMITTING



photograph wild mushrooms with World Fellowship Center. Talks/ guided walks on and off site. Call 447-2280 to register.

September 17: Red Parka Tricycle Race: Held annually in the Bear Peak Area this wacky event features adults racing on tricycles for prizes. All proceeds benefit the Dewey Mark RPP Scholarship Fund. Info: 603-374-2615.

September 18: Danforth Bay 5K walk/run: The last in this five-event series. Walk /run to benefit the MDA of New Hampshire. Registration starts at 7:30am at the starting area by the Bluffs entrance gate and is \$30 per race or sign up in advance for \$125 for all five races - and includes a t-shirt. Info: <http://www.danforthbay.com/RunDanforth25K>.

September 17: Double Down Downhill Series: A fun mountain bike event involves best of two runs DH race format. \$50 per race includes lift ticket. Registration is 10:00am to noon; Race starts at



2:00pm. Info: www.attitash.com/event/dddh1/.

September 17: Jen's Friends Climb Against Cancer: The Climb Against Cancer is an annual event held in September at Cranmore Mountain Resort. People of all ages participate, and many bring their four-legged family members. The hike up and down the slopes of Cranmore Mountain is approximately three miles. Info: <http://jensfriends.org/wordpress/event/jens-friends-climb-against-cancer-2/>

September 24: 100 Acre Challenge 5K Obstacle Adventure: Competitors will run, swim, crawl and climb as this 5K challenge takes them into the mud, water, over walls, rock piles and through the wood. It's all in fun and for a good cause with net proceeds benefiting the Believe in Books Literacy Foundation and our programs. The kids' race starts at 9:00am followed by their awards. Starting at 10am, heats for the individual competitors and teams of two and four will depart the starting line every 12 minutes. Winners from each



category are determined by best time. Following the event, food and beer will be available. Prizes for first three places of each category. Registration will be on-site the day of the event and will be priced as follows: Day of Race (9/24): \$75/Individual, \$115/Team of 2, \$200/Team of 4. Registration begins at 8am. The Mini Acre Challenge for kids ages 12 and under is for individuals only. Registration is \$10. All kids receive a prize. Info: <http://www.believeinbooks.org/100-acre-challenge.html>

September 24: Fall Festival at Settlers Green: Shoppers and families will enjoy free hay rides, pumpkin painting, apples & hot cider, plus a bake sale to support a community program. Live music from 12-2 p.m. Info: <http://www.settlersgreen.com/calendar/20/353-Fall-Festival>.

For a complete up-to-date events calendar and all the planning resources you need to visit to Mt Washington Valley, visit www.mtwashingtonvalley.org.

CELEBRATE THE 69TH WARNER FALL FOLIAGE FESTIVAL

**JOIN THE FUN! BRING THE FAMILY!
FREE ADMISSION!**

OCTOBER 7 - 9

Main Street of Warner, NH





- Crafts • Road Races
- Oxen Competitions
- Entertainment • Music
- New Food Vendors

**PARKING IS \$5
PARKING ONLY OFF EXIT 9**





ROUTE 103, EXIT 9 OFF I-89 • MORE INFO AT: WWW.WFFF.ORG



Jaffrey Civic Center to host RUSTED REMNANTS Exhibit

On Sept 9th the Jaffrey Civic Center will be celebrating the opening of "Rusted Remnants" a collaborative exhibit honoring vintage North America. Artists Guy Biechele, Alicia Drakiotes, Susan Ellis, Louise Parmenter-Hammerman and Brad Willard will present works in Fine Art, Fine Art Photography and Sculpture. Works will honor the history of the iron horse, shipping vessels, early farming sheds and many more subjects that have influenced North American life and lifestyles. This exhibit will be held in the Cunningham Gallery and runs through Oct 1, 2016 during regular business hours. The public is invited to attend at their leisure during open hours. All work is available for purchase. An opening reception will be held Friday, September 9th from 5-7 PM.

Guy Biechele is an accomplished Fine Art photographer whose images have been exhibited in galleries in New England and across the United States.

Alicia Drakiotes is a full time New England artist. She was born in Worcester, Massachusetts and completed her formal education at Keene State College where she earned a B.A. in Visual Art / Communications with a concentration in painting.

Susan Ellis: "Blessed to have been born with a creative eye, in my studio I lose track of time and reality. It's very meditative! At present I am searching for found objects and creating fundamental sculptures. One person's trash is another's treasure. .."



Louise Parmenter Hammerman, a retired NH high school art teacher lives in Westminster, MA., and has been actively painting for the past 14 years. Although primarily an oil painter, she also works in acrylics and soft pastel.

Brad Willard: "I have a love of the outdoors and photography. I try to find the art in things that some consider junk. I try to take the abstract out of things you see every day in a urban setting or on a hike in the woods." For more information, call 603-532-6527.

More than a museum – a chance to rethink tradition



Learn, Reflect, Renew

A visit to Canterbury Shaker Village will renew your spirit and linger in your memory long after you return home. This National Historic Landmark offers an opportunity to learn about the Shakers' 200-year legacy of innovation, entrepreneurship and simple living and reflect on how these traditions connect with your own life.

The historic Village includes:

- 25 original and four reconstructed Shaker buildings
- 694 acres of fields, gardens, forest, mill ponds and trails
- Only intact first generation Shaker Meeting House (1792) and Dwelling House (1793) in original locations
- Guided tours and self-guided exhibits
- Demonstrations daily
- Museum Store filled with simple gifts of artisan quality
- Lunch available at Shaker Box Lunch & Farm Stand

Open daily May 14-October 23 • Monthly Special Events



CANTERBURY SHAKER VILLAGE

288 Shaker Road • Canterbury, NH 03224 • 603-783-9511 • www.shakers.org



Apple love

Applesauce

This versatile food goes well with any meal, from chicken nuggets for your children to stuffed pork tenderloin and hearty red wine with a significant other.

Made by cooking a blend of peeled, cored apples, applesauce is the definition of comfort food. Serve right out of the container, or heat for extra homemade taste. Look for flavored and chunky styles in your market, and unsweetened sauces are readily available if you're watching sugar. Like to bake, but don't like extra fat and calories? Substitute applesauce for oil in baked goods. This works especially well with moist baked goods like cakes, muffins and brownies. To test with your favorite recipe, start by replacing half the oil with

the same amount applesauce.

One snack cup size container of applesauce counts as a ½ cup serving of fruit — the USDA dietary guidelines recommend Americans eat at least five cups of fruit each day.

Non-Alcoholic Apple Cider

Apple cider is the original American beverage. Early U.S. settlers drank apple cider morning, noon and night as their primary beverage, unsure of the safety of the drinking water. Until Prohibition, "cider" meant hard cider, an alcoholic beverage made by fermenting sweet cider. Cider makers carefully guard their secret cider recipes, some of which have been passed down from generation to generation.

Originally found only at local orchards, roadside stands, or farmer's markets in the chilly days of fall, the apple cider market has now expanded into a year-round business. So you can enjoy apple cider all year long (it

is great over crushed ice on a hot summer day). Sweet cider is made by crushing a blend of apple varieties into a pomace, then pressing the juice from the pomace. Tiny apple solids floating in the juice turn color when exposed to air, giving cider that gorgeous caramel color and opaque look.

Apple cider — 100% juice, not watered down, naturally sweetened by the fruit itself, with no sugar added — is a great way to drink your apples. Each 4-ounce glass of cider counts as a serving towards the USDA Dietary Guidelines recommended five servings of fruits and vegetables per day for optimal health.

Sweet cider is a highly perishable product. Treat it the same way you would milk: Keep it refrigerated at all times, and enjoy it either by the date on the label, or within 7–10 days. Most cider has been pasteurized and if not must be clearly labeled.



Peak Orchards

896 Craney Hill Road, Henniker • 603-428-3397

Closed Mondays Except

Open Columbus Day • 10AM - 5PM

Sept. 10TH-Oct. 17TH: 10AM - 5PM Daily

Oct. 17TH-til close of the season: 11AM - 4PM Daily

• weather permitting •

"PICK YOUR OWN APPLES"

McIntosh - Sept. 10	Red Delicious - Oct. 8
Courtland - Sept. 17	Golden Delicious - Oct. 15
Macoun - Sept. 24	Ida Red & Mutsu - Oct. 15
Empire - Oct. 1	

Dates are approximate - call to confirm

• Sweet Cider, Pumpkins, Winter Squash available in season.



Birchwood Orchard

200 Reed Rd., Mason, NH.

Apples Are Ready!

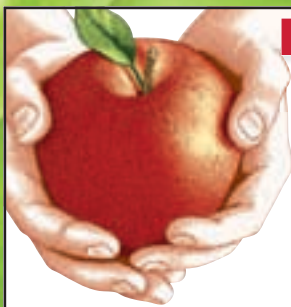
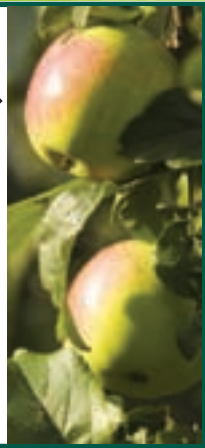
Vermont Cheddar Cheese,
Caramel Apples, Cider
and Much More!

Pick Your Own starts Sept. 6

603-878-3400 (P.Y.O. Line)

603-878-0542

Open 9am to 5pm Daily



Pick Your Own APPLES

Open Everyday 9 AM - 6 PM

Also offering: Fresh Fruits & Vegetables,
Jams, Jellies, Maple Products • Gift Shop
Our Own Bakery • Freshly Made Cider
Wagon Rides on the Weekends!

Visit our Playground
& Observation Platform!

CARTER HILL ORCHARD

73 Carter Hill Road • Concord, NH
603-225-2625 • www.carterhillapples.com

RIVERVIEW FARM



APPLES, PUMPKINS, CIDER, CORN MAZE

Horse drawn hayrides through the orchard,
weekend afternoons, weather permitting.

Open every day, 10am-5pm through October 31st.



We are 4 miles from exit 20 off I 89, on the River Road,
in Plainfield, NH 603-298-8519 www.riverviewnh.com

Apple love

Fresh Apple Slices

On the go? Pre-cut apple slices are made for you! Conveniently packaged and ready to eat, this nutritious, delicious snack is fully portable. Toss in your lunch bag, backpack or briefcase, for a crisp pick-me-up any time of day.

These time savers have been prepared with a Vitamin-C wash to prevent unsightly browning that happens when apples are cut.

Look for fresh-cut apple slices in convenient single-serve packs or bigger bags perfect for appetizer trays, salads, or other recipes.

A half-cup of apple slices or dices counts towards the USDA's recommended 5-a-day fruit servings.

Canned & Frozen Apple Slices

Love the taste of homemade apple pie, but don't have time to do all the work? Canned or frozen apple slices are your answer! Simply spoon into store-bought pie shells and your friends and family will think you cooked all day.

Looking for another easy dessert? Spoon heated, canned apple slices over slices of ready-to-serve pound cake, then stir cinnamon into packaged whipped cream to top, and enjoy!

Half a cup of apple slices counts towards USDA's recommended daily intake of five fruits per day.

Apple Crisp

- 6 McIntosh or other New England apples
- 1 T lemon juice
- 1 t cinnamon
- 1/4 t nutmeg

- 1/2 t salt
- Topping
- 3/4 c whole wheat flour
- 1/4 c old-fashioned oats
- 1/4 c brown sugar or maple syrup
- 5 T butter

Preheat oven to 350°. Core and slice apples into a buttered 8" square pan. Sprinkle lemon juice and spices over the apples. Combine topping ingredients to cover the apples. Bake for 45 minutes or until apples have softened.

Apple Gingerbread

- 1/2 c butter
- 1/2 c warm water
- 1 c molasses
- 1-1/4 c whole wheat flour
- 1-1/4 c white flour
- 1 t baking soda
- 1 t ginger
- 1/2 t cinnamon



HACKLEBORO ORCHARDS

61 Orchard Road • Canterbury, NH
 Now Open 7 Days a Week 9:00^{AM}-6:00^{PM}
 End of August thru Thanksgiving




- 🍏 *Pick Your Own Apples*
- 🍏 *Fresh Cider* 🍏 *Baked Goods*
- 🍏 *Pumpkins* 🍏 *Gourds* 🍏 *Winter Squash*
- 🍏 *Maple & Honey Products* 🍏 *Assorted Fresh Vegetables*

Free Weekend Hayrides, 50 mile view off our view deck,
 scenic picnic area, farm animals & more.

From Rte. I-93, take Exit 18; follow **BIG RED** apple signs. From Rte. 106,
 take Shaker Road to Baptist Road. Follow our **BIG RED** apple signs.

Also, visit our farmstand on 218 King Street in Boscawen
www.hackleboroorchards.com

The Weiser Family 

603-783-4248

*Celebrating our
25th year growing
at Hackleboro!*

*Thank you,
The Weiser Family*

- 1/2 t salt
- 1/4 t cloves
- 1/4 t nutmeg
- 2-1/2 c applesauce

Preheat oven to 350°. Melt butter in large saucepan. Remove from heat, and add water and molasses. Sift together dry ingredients and add to liquid, beating until well blended.

Pour applesauce into an 8" x 8" pan. Spoon gingerbread over applesauce. Bake for about 35 minutes.

Hard Apple Cider

Hard apple cider is made by fermenting a blend of apples with champagne yeast. Sent underground by Prohibition, the hard apple cider industry has enjoyed a remarkable renaissance in recent years. The light, crisp, subtly sweet taste is an excellent (and gluten-free) alternative to beer and other malt beverages.

Today, hard apple ciders are marketed in nearly every supermarket or package store in the country and available on tap. Cider bars are even popping up across the States.

Making gourmet hard apple cider has been compared to the winemaking process. Cider experts, like wine sommeliers, can teach you about pairing ciders with food and the complex range of ciders from sweet and fizzy to dry and low-carbonation.

Apple Cider Vinegar

Discovered by chance more than 10,000 years ago when a cask of wine was allowed to ferment too long, this tangy, fruity brew is now developed through a carefully controlled process. Commonly used in cooking, it has long been hailed for a long list of purported medicinal benefits.

Apple cider vinegar is made by fermenting apple juice in a two-stage process: First, the juice’s natural sugars

are converted by yeasts to alcohol, and then a group of bacteria called acetobacter convert the alcohol to acid. This acetic acid fermentation forms vinegar.

At its simplest, apple cider vinegar is a multi-purpose product, used in preserving and in recipes ranging from dressings to dessert. At its most complex, apple cider vinegar rivals any fine wine vinegar as a fine cooking ingredient.

Apple cider vinegar is usually found in stores near baking supplies or next to salad dressings and sauces. Read the label carefully to ensure you are purchasing original apple cider vinegar and not just a colored, white distilled vinegar. Recipes referencing apple cider vinegar generally refer to 5 percent solutions, so, again, read the label to ensure you are purchasing “the real deal.”

Courtesy of New England Apples & U.S. Apple Assoc.

POVERTY LANE ORCHARDS

A place for families to pick apples, buy apples (lots of different kinds), find fall treats, see across the Valley, celebrate Fall. Each visit is different!

OPEN: Early September 2016 through Halloween
9-6 weekdays, 10-5 Sat & Sun www.povertylaneorchards.com
(603)448-1511 in Lebanon NH



Also a place for grownups to find our fine fermented ciders, made from true cider apples, found on some fancy wine lists but made right here at:
FARNUM HILL CIDERS www.farnumhillciders.com

130 year old black walnut tree is being added to NH Big Tree list

Prescott Farm's 130 year old black walnut tree has been officially added to the NH Big Tree list! Come for a tour and see this magnificent big tree and more every Friday at 10:00am.

Laconia, NH – Prescott Farm is excited to share that their 130 year old black walnut tree is being added to the NH Big Tree list! The Magnificent Big Trees of Prescott Farm tour features this tree and others and will take place every Friday at 10am now till October 28. Come for a tour and see this magnificent big tree and more!

The NH Big Tree list is organized by UNH Cooperative Extension and recognizes and records the state's biggest "champion" trees. From the "William Whipple" horse chestnut in Portsmouth to a black spruce bog in the North Country, dedicated volunteers search the state for the largest examples of individual trees species that grow in New Hampshire. NH's State and County Listing of Big Trees can be viewed online their website at <https://extension.unh.edu/Trees/NH-Big-Tree-Program>.

Prescott Farm's black walnut tree measures 7' 7" (91 inches) in circumference, meaning it is about 130 years old (planted in about 1886). The largest recorded black walnut tree in New Hampshire is almost twice the size at 14' 10" (178 inches) in circumference and is located in Hopkinton.

Our new Magnificent Big Trees of Prescott Farm



tour features our black walnut and other trees equally impressive in size and beauty. Prescott Farm is home to some pretty big old trees, including this black

walnut tree which is now listed as the largest one in Belknap County! These trees are quite magnificent to behold, and can also teach us a great deal -- just imagine what they have "seen" over the course of their lives! On this one-hour naturalist-guided tour, you will learn about trees (of course!), but also fascinating facts about ecology, history and how our landscape has changed over the years. Every Friday this tour will take place from 10:00am – 11:00am.

Prescott Farm offers public programs designed to encourage environmental exploration for all ages; field trips; WildQuest Day Camps (during school vacation weeks – Feb., April & June-August); a Naturalist in the Classroom program which fosters long-term partnerships with local elementary schools; and Fledglings, a nature-based preschool. The 160 acre historic family farm features woodland and field trails, historic barns, an old-fashioned maple sugaring operation during the month of March, heritage gardens, and a forested pond. Prescott Farm is open year round, seven days a week from 9:00 – 4:00PM. Hiking trails and our Natural Playscape are open to the public daily from dawn to dusk.

The cost of this tour is \$7.50 and \$6.00 for Prescott Farm Members. Registration is required for this tour and can be made online our website at www.prescottfarm.org or by calling 603-366-5695. We look forward to sharing these magnificent trees with you.

PROFESSIONAL THEATRE • EST. 1933

PETERBOROUGH PLAYERS

"American summer repertory theater at its most accomplished."
-The Wall Street Journal

2016 Summer Season

**Share in the experience
by calling
our box office
to secure
your summer
with the Players!**

GOD OF CARNAGE

A comedy by Yasmina Reza

Aug 31 - Sept 11

CRY HAVOC

A drama by Stephan Wolfert

Sept 14 - 18

For more information
call our
Box office
at 603-924-7585
or visit us
online at
peterboroughplayers.org

October - May the Players is pleased to host our **ARTS ON SCREEN SERIES**
MET HD LIVE, National Theatre Live and the Bloshoi Ballet

Prescott Farm to host Permaculture Design Charrette

LACONIA, NH -- Prescott Farm Environmental Education Center will be hosting a 3-day permaculture design charrette from September 23-25 to guide campus growth and use of existing resources as part of our 2016 strategic planning process.

Permaculture is a creative design process based on whole-systems thinking informed by the ethics of "Earth Care, People Care, Fair Share" and 12 design principles. This approach guides us to mimic the patterns and relationships we can find in nature and can be applied to all aspects of human habitation, from agriculture to ecological building, from appropriate technology to education and even economics (More information on permaculture can be found at <https://permacultureprinciples.com/>).

For this charrette Prescott Farm is looking for a diverse team of permaculture practitioners, students, teachers, leaders of other nonprofit organizations, architects, landscapers, and others to collaborate on this project. Previous experience with permaculture design is helpful, but not required. Participants that have completed a permaculture design course will earn an Advanced Permaculture Design certificate. The skills gained during the charrette will be extremely useful as participants tackle similar projects with their own properties or organizations.

The charrette will kick-off on Thursday, September 22 at 6:00pm with an optional 2-hour Introduction to Permaculture presentation, which will also be open to the general public (\$15 per person). Friday will be an introduction to Prescott Farm and its goals, Saturday will focus on A & A (analysis & assessment), and Sunday attention will turn to design recommendations, concluding by mid-afternoon. Participants may register online at <http://prescottfarm.wufoo.com/forms/permaculture-design-charrette>.

The charrette facilitators/instructors are Steve Whitman, Bryan Felice and Sarah Dunham-Miliotis. Steve is a professional planner and educator based in New Hampshire and his work is focused largely on community planning and sustainability issues. Bryan has been building with natural materials for most of his life, founded the NH based eco-design/build firm Undustrial Timber Frames and teaches at PSU. Sarah is the Education Director at Prescott Farm.

Prescott Farm offers public programs designed to encourage environmental exploration for all ages; field trips; WildQuest Day Camps (during school vacation weeks – Feb., April & June-August); a Naturalist in the Classroom program which fosters long-term partnerships with local elementary schools; and Fledglings, a nature-based preschool. The 160 acre historic family farm features woodland and field trails, historic barns, an old-fashioned maple sugaring operation during the month of March, heritage gardens, and a forested pond. Prescott Farm is open year-round, seven days a week from 9:00-4:00. Hiking trails and our Natural Playscape are open to the public daily from dawn to dusk.

For more information, please call Sarah Dunham-Miliotis at (603) 366-5695 or e-mail sdunham@prescottfarm.org

Photographer Jackie Bonafide at Prescott Farm

On Sunday, September 18th from 1:00-3:00pm nature photographer Jackie Bonafide will be leading a Seeing Smartly: Connecting with Nature Through the Lens of Your Smartphone workshop at Prescott Farm. Prescott Farm is located at 928 White Oaks Road. Learn how to capture the moment and magic of the natural world with your smartphone. Join Jackie for this fun and interactive workshop which will introduce you to focusing, using light, composition, and framing to take amazing nature photos – no fancy camera required, just your phone. The 160 acre historic family farm features woodland and field trails, historic barns, an old-fashioned maple sugaring operation during the month of March, heritage gardens, and a forested pond. Prescott Farm is open year round, seven days a week from 9:00 – 4:00PM. Hiking trails and our Natural Playscape are open to the public daily from dawn to dusk. Registration is required and space is limited. Deadline is Saturday, September 4. The cost is \$20 and \$18 for Prescott Farm Members. Registration can be made online our website at www.prescottfarm.org or by calling 603-366-5695.

The poster for the Palace Theatre's Broadway in New Hampshire series features a yellow top section with the theatre's logo and tagline. Below is a blue section with the series title and sponsor information. The main part of the poster is a grid of four plays, each with a decorative border of white lights. The plays listed are Sister Act, The Best Little Whorehouse in Texas, The Nutcracker, and A Christmas Carol, with their respective run dates in 2016.

Palace Theatre
America's Award-Winning Historic
PALACE THEATRE
Where the arts come alive!

— Experience the magic of —
BROADWAY IN NEW HAMPSHIRE

Citizens Bank® | 2016 - 2017 PERFORMING ARTS SERIES

SISTER ACT
SEPT 9 - OCT 1, 2016

the BEST little WHOREHOUSE in TEXAS
OCT 21 - NOV 12, 2016

the Nutcracker
NOV 25 - 27, 2016

A Christmas CAROL
DEC 2 - 23, 2016

603.668.5588
PalaceTheatre.org

NH Boat Museum's Lake Winnepesaukee Poker Run

Wolfeboro, NH: One of the New Hampshire Boat Museum's missions is to encourage everyone to enjoy the beauty of our state's pristine lakes. To that end, the Boat Museum is hosting a Lake Winnepesaukee Poker Run on Saturday, August 27th. Held rain or shine, this will be a great day on the lake!

All motor boats are encouraged to enter whether they are vintage wooden boats or fiberglass. This is not a race and is intended for all interested boating enthusiasts who want to have a fun morning in support of the New Hampshire Boat Museum. The morning will begin with a launch in Wolfeboro at the Town Docks at 9:00am. Participants will make five stops on Lake Winnepesaukee following the lead boat in their boat group. At each stop on the lake, boats will receive a token that will later be redeemed for a poker hand.

After a fun morning touring, everyone will head back to the Wolfetrap Bar and Grill for a catered lunch. There participants will redeem their chips for their poker hand with the winning hands receiving New Hampshire Boat Museum Poker Run plaques for first, second and third place. As a fun addition to the event, superb aerial photos will be taken from a helicopter. These photos will be available for sale after the event



as a wonderful reminder of this fun event.

For participants who register and pay by August 19th, the cost to participate is \$75 per boat which allows for the captain and one passenger. The cost for each additional passenger is \$30 per person. For those who register and pay after August 19th, the cost is \$100 per boat (includes captain and one passenger) with \$35 for each additional passenger. Costs include the catered lunch at the Wolfetrap. Reservations and payments are required by August 19th to assist with lunch preparations. To register or for questions either contact the Museum at 569-4554 or download the

application on-line at www.nhbm.org.

The New Hampshire Boat Museum is open for the 2016 season from Saturday, May 28 - October 10, 10am-4pm Monday through Saturday, and Sunday 12noon-4pm. The Museum which is a not-for-profit institution focusing on New Hampshire's boating heritage is located at 399 Center Street, Wolfeboro Falls, 2 miles from downtown Wolfeboro in the former Allen "A" Resort dance hall/theater building. For further information contact the Museum at 603-569-4554, write to museum@nhbm.org, www.nhbm.org or via Facebook.

Tasty Homestyle Cookin'

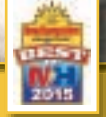
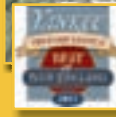
PARKER'S MAPLE BARN

19th Annual Honor the Spirit Pow-Wow
September 10 & 11 • 10:00AM - 5:00PM
A Gathering of Native Americans



• FREE PARKING
• FREE ADMISSION

One of New Hampshire's Top Restaurants



Featured in Yankee Magazine's
 Editor's Choice Award —
 Best Place to Visit 2013, 2014, 2015, 2016

NH Magazine's Reader's Choice Award
 for Best Pancakes 2013, 2014, 2015

RESTAURANT & GIFT SHOP OPEN EVERYDAY
 See our online video and catalog at:
www.parkersmaplebarn.com

Restaurant & Gift Shop Hrs:
 Mon.-Fri. 8^{AM} - 2^{PM}; Sat. & Sun. 7^{AM} - 4^{PM}

**We have lots of
 White Cedar
 Outdoor
 Furniture
 and Swings
 on sale at the
 gift shop.**



1316 Brookline Road • Mason, NH (only 3 miles off Route 13) Call for Best Directions (603) 878-2308 or 1-800-832-2308

NH Theatre Project Youth Repertory Company auditions

Monday, September 12, 4:00-8:00 pm & Tuesday, September 13, 4:00-8:00 pm To schedule an audition time: 603-431-6644 ext. 4, info@nhtheatreproject.org Are you serious about learning the craft of theatre? Are you searching for more-in-depth training? Would you like to learn a variety of acting techniques, and also have opportunities to study directing, script analysis, theatre history, stage management, technical

theatre, educational drama and design? Then NHTP's Youth Repertory Company is for you! Created in 1999, the NHTP Youth Repertory Company is designed for passionate, gifted students who want to experience a professional theatrical community. Participation is by audition only. Attendance at all workshops, master classes, rehearsals and performances is mandatory. The Senior Repertory Company (ages 13-17) is offered in three trimesters with performance opportunities in December, March, and June. Pending rights, the Senior Company will present *Is He Dead?*, a new farce written by Mark Twain and updated by playwright David Ives. The Junior Repertory Company (ages 10-15) runs in two semesters, with a final production of *The Jungle Book* in April. Thanks to a generous endowment from the Cherylanne Williams Scholarship Fund at the NH Charitable Foundation, some scholarship opportunities are available each year to both the Junior & Senior Companies. Scholarship awards are based on both merit and financial need. Please inquire for additional information.



Photos by Meghann Beauchamp



Auditions for New Hampshire Theatre Project's Youth Repertory Company will be held on Monday, September 12, 4:00-8:00 pm & Tuesday, September 13, 4:00-8:00 pm at West End Studio Theatre, 959 Islington Street, Portsmouth, NH. For auditions, please memorize two contrasting 1-2 minute monologues, and bring a headshot and resume, or list of theatre experiences and related skills. Students must be accompanied by a parent or guardian as auditions will include a short interview with student and parent or guardian. Audition slots are 15 minutes.

For additional information about the NHTP Youth Repertory Company program, please contact artistic director Genevieve Aichele at gen@nhtheatreproject.org or 603-431-6644 ext. 2.

The Sandwich Fair

SANDWICH
NEW HAMPSHIRE

A FAMILY TRADITION!

OCT
08-09
10
2016

SATURDAY ONLY

We welcome the Granite State Disc Dogs

Oxen Pulling is back at the fair!

MONDAY ONLY

~ Monday ~
Say goodbye to Art Harriman

Monday Events for the Family:

Kids Scavenger Hunt	The Women's Skillet Toss
Pickup Truck Pull	The Gentlemen's Keg Toss

FAIRGROUNDS OPEN DAILY AT 8AM

Friday Midway Preview 4-9
Pay One Price Rides \$20
Saturday Pay One Price Rides 9-2 \$20
Rides Open at 9am
Saturday, Sunday & Monday

Midway by
Gillette Shows

www.thesandwichfair.com

NEW HAMPSHIRE'S WHITE MOUNTAINS

SOME PLACES HAVE ALL THE FUN



Endless Adventure
and
Mountains of FUN!

Discover and share
your **Adventures** on



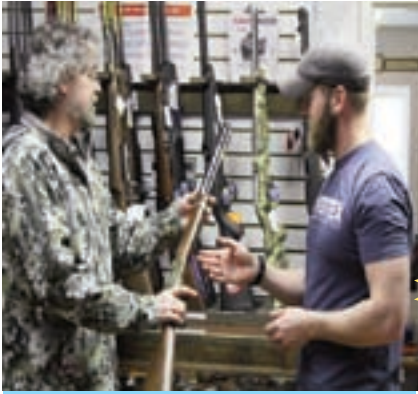
The White Mountains is a wonderful place to **escape**, **explore** and **create** unforgettable memories. Experience towering peaks, stunning scenery, spectacular waterfalls, limitless recreation and **17 legendary attractions** that have provided a lifetime of memories and cheer for generations of visitors.

White Mountains Attractions

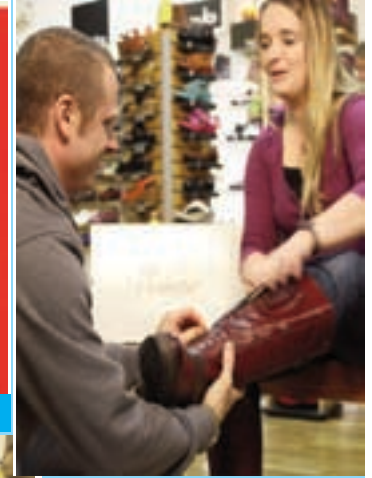
- 1 Alpine Adventures
- 2 Attitash Mountain Resort
- 3 Cannon Aerial Tramway
- 4 Clark's Trading Post
- 5 Conway Scenic Railroad
- 6 Crammore Mountain Resort
- 7 Flume Gorge
- 8 Hobo Railroad
- 9 Loon Mountain
- 10 Lost River Gorge & Boulder Caves
- 11 Mt. Washington Auto Road
- 12 Mount Washington Cog Railway
- 13 Polar Caves Park
- 14 Santa's Village
- 15 Story Land
- 16 Whale's Tale Water Park
- 17 Wildcat Mountain

**WHITE MOUNTAINS
ATTRACTIONS**

VisitWhiteMountains.com | 603.745.8720



100% Solar powered



Vermonts premier shopping experience located on 18 acres



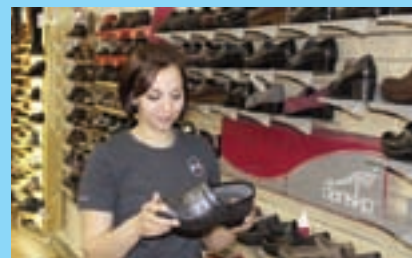
Boot Hill : Over 20,000 pairs of boots and shoes in stock . We can fit your feet and lifestyle



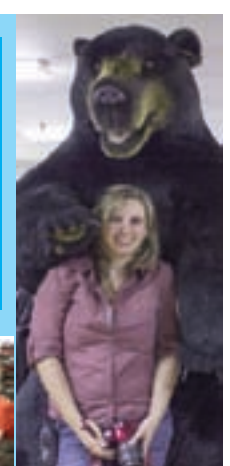
The best prices on Maple syrup and Cabot Cheddar cheese around



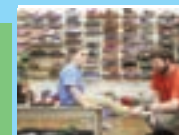
Say cheese-
Cabot cheddar
3lb still just \$11.99
Vermont Maple syrup
quarts \$12.95
half gallons \$23.95



Tax free
Footwear & Clothing.
For Women who like
to shop and even men
who don't .



Monday-Saturday 8:30-5:30 Friday night till 8PM closed Sundays
286 Waits River Road Bradford, VT 800-222-9316
1 mile off I-91 exit 16 straight through the lights



SPCA 'Walk for the Animals' is on it's way! Sat. Sept. 17

Tie those shoes and leash up the pups! The Pope Memorial SPCA of Concord-Merrimack County's "Walk for the Animals" is on it's way!

Concord, NH—The Pope Memorial SPCA of Concord-Merrimack will host its 2016 Walk for the Animals event to raise critical funds for the community's homeless and abandoned animals on Saturday, September 17, 2016. The event will take place at Delta Dental Field in Concord, NH from 10:00AM-2:00PM.

Its officially time to fetch your friends! Join hundreds of local animal lovers for your choice of a one-mile or three-mile walk to benefit homeless pets at the Pope Memorial SPCA. Savor the beauty of a fun summer day with your pet out in Concord. Welcoming walkers back to the event field, they will find food, refreshments, raffles, a vendor fair, a kids' zone, and live demonstrations for people (and pups) of all ages!

Family friendly and a ton of fun! Join community members from throughout New Hampshire and beyond as your steps will save lives! Registration is now open and interested Walkers are encouraged to sign up! Online advanced registration is \$25 and can be completed at PopeMemorialSPCA.org. Registration includes a gift of one bib and one dog bandana to be



received at the event.

To make a larger impact for homeless pets, Walkers are encouraged to create a Walk for the Animals fundraising team or "pack". Invite friends, family members, neighbors, or co-workers to join in on the fun! Earn special team perks and prizes while

raising more funds for the animals of Merrimack County and beyond. Prizes will be awarded to individuals and Packs, including an exclusive t-shirt for individuals who raise \$100 for the animals!

Walkers excited to register can do so at www.PopeMemorialSPCA.org/Walk. Full list of activities, ▶

Drive, Tour & Explore MOUNT WASHINGTON

Find adventure at every turn on the legendary Mt. Washington Auto Road

BOOK YOUR GUIDED TOUR ONLINE
SAVE \$5 PER PERSON
24 hrs ahead
MtWashingtonAutoRoad.com

MT. WASHINGTON AUTO ROAD

ELEVATE YOUR ADVENTURE

THIS CAR CLIMBED MT. WASHINGTON

1 Mount Washington Auto Rd, Route 16, Gorham, NH
 (603) 466-3988 • MtWashingtonAutoRoad.com



vendors, and entertainment can be found online. The event sponsors include Sandy's Pet Food Center, Banfield Pet Hospital, Infinite Health Family Chiropractic, and The Rowley Agency. To learn more about sponsor and vendor information please contact Lori Taylor at (603) 856-8756 x225 or at ltaylor@popememorial-sPCA.org.

About the Pope Memorial SPCA of Concord-Merrimack County: For over 100 years, the Pope Memorial SPCA of Concord-Merrimack County has been dedicated to caring for abandoned and homeless pets, protecting and advocating for pets in need, and promoting the humane treatment of all animals. The organization's pet adoption, pet food pantry, and humane education programs collectively touch the lives of several thousand children, adults and families each year. To learn more, please visit www.popememorialsPCA.org, or visit the shelter located at 94 Silk Farm Road in Concord NH.



43RD ANNUAL — 2016

**CHESHIRE
CRAFTSMEN'S
FAIR**

!!FREE PARKING!!
!!FREE ADMISSION!!



**SATURDAY
OCTOBER 1
AND
SUNDAY
OCTOBER 2
9AM - 3PM**

*Refreshments & lunch
available — proceeds
benefit Cheshire
Housing Trust*

KEENE RECREATION CENTER — 312 WASHINGTON STREET, KEENE
<http://sites.google.com/site/cheshirecraftsmen>



Jaffrey Civic Center to host Water Color Exhibit by Susan Bull Riley

The Jaffrey Civic Center is delighted to host a watercolor exhibit by Vermont artist, Susan Bull Riley. The exhibit will run from September 10th to October 8th and will be held in the first floor Auditorium Gallery. There will be an Opening Reception on Saturday, September 10th from 5 to

7 pm.

Susan lives in East Montpelier, less than an hour away from her South Burlington roots. Her subject matter ranges from delicate botanical watercolors to large oil landscapes. Her work has a classical feel to it and according to the artist is "perhaps a reflection of

my training in music of earlier centuries. Art has also led me to collaborate with a number of institutions that seek to protect the natural world" which she considers her "primary muse".

A graduate from Dartmouth College with a degree in music, Susan subsequently earned a



180 ACRES OF SCENIC SPLendor



EXIT 33 OFF I-93,
LINCOLN, NH 03251
800-343-8000, 603-745-8000
WWW.INDIANHEADRESORT.COM
INFO@INDIANHEADRESORT.COM



**AMERICA'S
STONEHENGE**
...EXPLORE THE MYSTERIES!


INVESTIGATE CHAMBERS

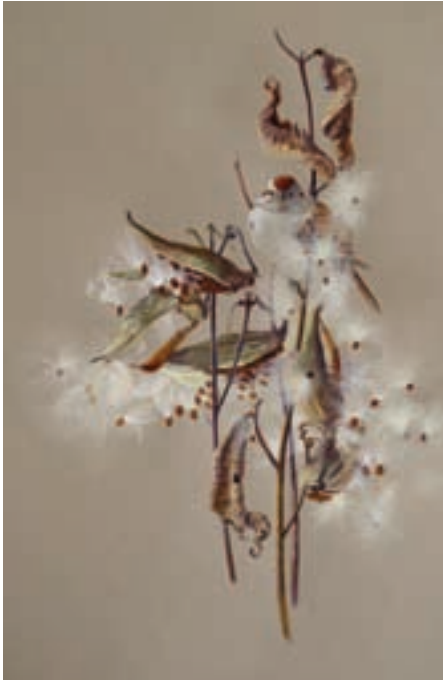
VISIT THE ALPACA HABITAT

A 4,000 YEAR OLD
ADVENTURE IN ARCHAEOLOGY

105 Haverhill Road | Salem, NH 03079

www.StonehengeUSA.com





masters degree in flute performance from the New England Conservatory of Music. Susan's work in the realm of natural history has received honors in galleries and institutions where there is national and international representation; it has been used by organizations such as The New York State Museum,

The National Science Foundation, the Vermont Community Foundation, the American Chestnut Foundation, the Cornell Laboratory of Ornithology, and local land trusts.

The Jaffrey Civic Center is located at 40 Main Street, Jaffrey, New Hampshire, next to Library,

parking in rear. Hours are Monday through Friday, 10 am- 12 noon, 1 pm to 5 pm and Sat 10-2. Admission is always free. For more information about us, call 603-532-6527, e-mail us at info@jaffreyciviccenter.com find our website, www.jaffreyciviccenter.com, or "Like" us on Facebook.

SHELTER FROM THE STORM

ANTIQUE

RAFFLE AND ROADSHOW

Friday, September 30th

5:30-8:30 pm

Woodbound Inn • Rindge

\$35 per ticket / 5 for \$150
(Each ticket admits two)

TICKETS: 603-532-8222 or online at www.shelterfromthestormnh.org

WIN \$2016 RAFFLE GRAND PRIZE

OVER 30 MORE RAFFLE PRIZES!

Complimentary Wine & Food

Local Artwork

SILENT AUCTION

SPECIAL LIVE AUCTION

CASH BAR

MUSIC

Each ticket admits two and allows two items to be appraised by the NH Co-op of Milford at the event.

Remick Museum & Farm

Summertime Activities & Tours. Monday–Saturday through September 3, 2016. Hours: Monday–Friday 9 a.m.–5 p.m. & Saturday 9 a.m.–4 p.m. A full day of history-based exploration for ALL generations at Remick Country Doctor Museum & Farm in Tamworth Village. \$5; ages 4 and under, FREE. Call/see website for details! 603-323-7591.

Forgotten Arts: Fiber Arts Group. Tuesdays, September 6 & 20, 9:30 a.m.–12 p.m. Fiber artists and/or interested onlookers are welcome to join our Happy Weavers & Friends group to learn the historic art of weaving, spinning, sewing, quilting, and more. Bring your own project to work on, if desired. This group meets monthly on an every other Tuesday schedule at Remick Museum & Farm in Tamworth Village. FREE. (Does not include access to the Museum.) 603-323-7591.

Carroll County Hillsdale 4-H Dairy Club. Thursday, September 8, 7–9 p.m. The Carroll County Hillsdale 4-H Dairy Club meets monthly at Remick Country Doctor Museum & Farm in Tamworth Village. The club focuses on learning about various dairy breeds of cattle, goats and sheep, while participating in local and state 4-H activities. The club is open to all residents of Carroll County, ages 8–18 (as of January 1 of the current year). FREE. Contact Farm Manager Lindsey McAllister at lmcallister@remickmuseum.com 603-323-7591.

Plants of Field & Forest Series: Fiber Dyeing

with Historic Woad. Pre-register by Friday, September 2 for this Saturday, September 10, 10 a.m.–2:30 p.m., class. Led by Carol Felice, Museum Educator/Herbalist at Remick Country Doctor Museum & Farm in Tamworth Village. Experience the amazing magic in Woad, *Isatis tinctoria*, a Brassica used since ancient Egyptian times to produce blue dye. This in-depth workshop will start at the Dye Garden, harvesting fresh Woad plants to create the dye bath. Then we will wash wool fiber, discuss the plant's medicinal properties and growth requirements. Dress for outdoor sun and shade, and bring your own lunch. Light refreshments provided. \$40/participant; ages 16 & up. 603-323-7591.

Full Moon Campfire & Walk. Friday, September 16, 7:30–9 p.m. Join us for a "Night at the Museum" at Remick Country Doctor Museum & Farm in Tamworth Village. Gather around a campfire, listen to stories and make s'mores. When the moon is up we will take a twilight stroll and listen for owls and other nighttime wildlife. Weather dependent: if it is raining this event will not be held. Please dress for the weather and BYOBug spray, and flashlight. Donations gratefully accepted. 603-323-7591.

Homeschool Class: Apple Cider. Monday, September 12 is the final day to sign up for this Monday, September 19, 10 a.m.–12 noon, class. Remick Country Doctor Museum & Farm in Tamworth Village offers season-based classes for homeschool students, ages 6–12, one Monday a month during the

school year. Discovery through the senses, combined with hands-on activities, encourages deeper understanding of each themed class. \$5/participant. Must pre-register; no walk-ins. 603-323-7591.

Small Farmers Club: "Little House" for Little Ones. Friday, September 23, 10–Noon. A monthly, farm-fun exploration for young children at Remick Country Doctor Museum & Farm in Tamworth Village. Each monthly session includes a hands-on activity inspired by Laura Ingalls Wilder's Little House book series. Activities will include stories, crafts, games, and exploration of the farmstead. \$5/child, ages 2–6. Parent/guardian must accompany child/children for duration of activity. Space is limited; pre-registration recommended by Thurs., Sept. 22. 603-323-7591.

Signature Event: 12th Annual Harvest Festival, Saturday, September 24, 11 a.m.–3 p.m., Remick Country Doctor Museum & Farm, Tamworth Village. A celebration of agricultural life and accompanying crafts, trades, traditions and pastimes, located on the grounds of a 200+-year-old farmstead. Seasonal foods, festivities and old-time fun for all generations. Demonstrations, farm animals, tractor-pulled wagon rides, live music, seasonal games, cider pressing, fall harvesting and gardening information, Forgotten Arts exhibitors, vendors, antique farm machinery, exhibits, Farmhouse Kitchen food and lunch for sale, and more. Admission: \$10, ages 11 and up, \$5, ages 5–10, FREE for ages 4 and under. Members receive \$2 off admission price. 323-7591.

The Shattuck — It's More Than Just Golf



**Shattuck Golf
Cart Wildlife
Nature Tours**

*Experience the beauty of the Shattuck
without being a golfer...*

- Over 5 miles of scenic beauty
- Spectacular views of Mt. Monadnock
- Abundant wildlife
- 36 wooden bridges cross pristine wetlands
- A must for Monadnock region visitors!
- Early morning and sunset tours
- Hundreds of photo opportunities
- Guided or unguided tours available

\$12 individual / \$20 for 2 / Children under 10 free (two adults and one child per cart)
Ride includes: Complementary adult & children's beverage • Snack box • Maybe combine with lunch...

— CALL FOR RESERVATIONS —

53 Dublin Road • Jaffrey, NH 03452 • 603-532-4300
Shattuck@sterlinggolf.com • www.sterlinggolf.com/shattuck

Oktoberfest

Live Gompah band
October 2

Reservations required. BYOB
1-800-242-6495

THE INN at EAST HILL FARM
Troy, NH
east-hill-farm.com




Twinkle Town
MINIATURE GOLF

Family Owned & Operated since 1961
Route 12 South of Keene
Beyond Cheshire Fairgrounds
Open 7 Days & Nites from 10 AM
Call 352-6784

19 Holes
\$3.75 per person -
Replays \$.50

Batting Cages
Softball - Baseball

**Ice Cream,
Hot Dogs,
French Fries,
Fried Dough
& Drinks**

40 flavors of Hard Pack
24 and more of Soft Serve
Frappes • Floats • Sundaes
• Banana Splits

Gnomes vs. Flamingos: A brief history of lawn ornamentation

Through Sept. 6, 2016. Free and open to the public. At the Historical Society of Cheshire County, 246 Main Street, Keene NH * <http://hscsnh.org/>

In a salute to our decorative impulses, the Historical Society of Cheshire County presents a showcase of lawn art from the late 19th century through today.

The "Gnomes vs. Flamingos" exhibit features approximately 120 individual pieces of ornamentation and 45 photographs of figurines, plastic creatures, metal objects and other artifacts that bring life to front lawns. Anyone who believes that lawn art is only about shiny reflecting balls on pillars will be corrected here.

The display, in the exhibit room of the Society's Ball Mansion headquarters, is built on lawn ornaments loaned by 30 individuals and businesses in 15 different communities in New Hampshire, Massachusetts and Vermont. The items on display range widely in size, color and materials that include glass, poly-resin, plastics, concrete and crushed granite. The exhibit focuses the eye on different periods of lawn ornamentation – for example, a Victorian age of garden gnomes and a mid-20th century fenced yard populated with figurines. As for gnomes and flamingos after which the exhibit is named, they've been given their own corners of the room in recognition that they don't always get along.

Special guest artist for the show is photographer Medora Hebert of Westmoreland who spent months photographing lawn ornaments throughout New Hampshire and Vermont. Also on display are the works of contemporary artist and metal-smith Bob Taylor of Alstead, traditional folk artist Tim Campbell of Keene and chain saw carver Peter Auchmoody of Bellows Falls.

The idea for this unusual exhibit is credited to two Historical Society staffers who, on an afternoon walk in downtown Keene last year, took note of yard ornaments that were displayed outside the florist shop In the Company of Flowers.

The Historical Society mounts a handful of major exhibits every year, among its many other activities. "Gnomes vs. Flamingos" represents its first study of lawn art. Call Jennifer Carroll at 603-352-1895.



LODGING

We overlook mountains, golf course, ponds, bridge & river. Golfing Discounts for locals! Stay 3 + nights, 20% off/Mention: InNH! Exit 30 off I-93. 800-227-4454 • www.jackolanternresort.com

Oak Hill GC

9 Holes • Meredith NH
279-4438

Friendly!
Scenic!
Reasonable!

Cheshire Children's Museum

The Colony Mill Marketplace
Keene, New Hampshire

Come play Tuesday through Saturday from 10 - 5 or Sunday 12 - 4 (Closed Monday)

--- Imagine a world of possibilities ---

1-603-903-1800
www.cheshirechildrensmuseum.org

Old Road Antiques

Antiques, Art, Collectibles, Furniture

Open Seasonally May to October After Labor Day Fri., Sat. & Sun. 10AM-5PM until Columbus Day

9 Old Sutton Road, Bradford, NH
603-938-2833
www.oldroadantiques.com

OPEN 7 DAYS A WEEK
Mon, Tues, Wed & Fri 10-6pm; Thurs 10-7pm; Sat & Sun 10-5pm

Free parking along the side of our building

321 Elm Street • Manchester, NH
(603) 606-1736
AntiquesOnElm@comcast.net

Antiques on Elm

www.AntiquesOnElmManchester.com

14th Annual MHS Hair Ball - Phantom of the Paw-Purr-a! set

The #1 Event for Charity in the Monadnock Region moves to a new date - September 24th Keene, NH - - - Monadnock Humane Society will hold its 14th Annual Hair Ball – themed “Phantom of the Paw-Purr-a” – on Saturday, September 24th at the Keene Country Club in Keene, NH to benefit the homeless animals of our community. Once again voted the #1 Event for Charity in the “Best of Monadnock” awards, this year’s Hair Ball promises a fun-filled evening of fabulous food, beautiful surroundings, dancing with music provided by local band Wyld Nightz, and the excitement of an incredible live and silent auction. Attire is black tie optional and costumes are encouraged.

This year, the Hair Ball committee (a volunteer team chaired by Jennifer Thompson, also Board Vice Chair) decided to move the event from November to September. The decision was motivated by concerns about the number of community events that fill November’s calendar. “We felt that this date would allow more people to attend,” said Thompson. “We heard from so many people in the community that the November date conflicted with other events they attended annually.”

Each year, over 150 people gather together at the Hair Ball in the spirit of community and generosity for the animals. The event kicks off with a cocktail hour featuring a full cash bar from 6:00 – 7:00 pm with



delicious appetizers and is followed by a plated dinner with a decadent dessert.

Attendees are also invited to bid on auction items and services that have been donated by many local (and some national) businesses and individuals. The live and silent auctions will feature a Safari, wide

range of tickets to events, gift certificates, original artwork, lovely jewelry and more. Tickets are \$125 per person and can be purchased on the MHS website (www.monadnockhumanesociety.org/2016hairball) or by phone (603.352.9011, ext. 112, Alice Sears). Individual tickets and tables of 10 are available.



20 Park Street
Gorham, NH 03581
Gorham Town Hall

SEPTEMBER EVENTS

BIG MOOSE BACH FEST VII

Saturday & Sunday

September 3 & 4th @ 4:00 pm

Presented by

Music in the Great North Woods

JUSTON McKINNEY, Comedian

Friday, 9/30 at 7:30 pm

Air Conditioned - Handicap Accessible

Newly renovated 224-seat Community Theater

Info/Tickets: www.medallionoperahouse.org



Discover camping in New Hampshire at Encore resorts!

- Transient, monthly, seasonal and annual sites available
- Close to Salisbury and Hampton Beach
- Exciting activities & events
- Resort style amenities
- Rentals



Sandy Beach RV Resort, Contoocook



Pine Acres RV Resort, Raymond



Tuxbury Pond, South Hampton



855-387-2667
RVontheGo.com

Swan Lake at Prescott Park Arts Festival

PORTSMOUTH, NH: Portsmouth Symphony Orchestra is teaming up with the Great Bay Academy of Dance to present Swan Lake on Friday, September 2 and Sunday, September 4, 2016. Both performances will start at 7:00pm on the Prescott Park Arts Festival stage in Portsmouth, New Hampshire.

The Portsmouth Symphony Orchestra is comprised of more than 65 musicians from the Seacoast region. The full orchestra will be performing the moving and expressive score for Swan Lake, allowing audience members to fully experience the magic of ballet when coupled with live music.

Tchaikovsky's classic ballet, which originally debuted in Russia in 1877, is a tale of love and loss woven around two girls, Odette and Odile, who resemble each other so closely they are often mistaken for one another. The white swan, Odette, attempts to win the love of her prince while Rothbart and Odile, the black swan, tries to ruin their love.

"The Portsmouth Symphony Orchestra is always looking for ways to collaborate and connect with new and different audiences," notes John Page, Portsmouth Symphony Orchestra's Music Director. "Elisa Gerasin, the Director of Great Bay Academy of Dance, and I started talking about bringing the first ballet with a full orchestra to the Prescott Park Arts Festival stage several years ago. She and I have



worked together each year in order to make these performances a reality and we know audiences of all ages will be delighted."

"These organization are a treasured part of our community and we're honored to have them on our stage," said Prescott Park Arts Festival President, Ben Anderson. "This celebration of local talent is the

perfect way for us to wrap up our summer season."

Both performances are open at no charge to the public, however a suggested donation of \$5-10 at the gate is encouraged. In the event of inclement weather, the performance will take place at Portsmouth High School. The event is sponsored in part by Kennebunk Savings Bank.



Located just 40 min NORTH of Franconia Notch

Big Maze * Small Maze * Pretendin Barnyard Golf * 100' of underground tunnels friendly goats and new surprises every year

Open at 10 am daily (weather permitting)

Mon - Fri: Last people enter at 2 pm

Sat & Sun: Last people enter at 3 pm

1404 Wheelock Road, Danville, VT 05828

Everyone is out of the maze by 4:00 pm

1-802-748-1399 www.vermontcornmaze.com

Announcing capital improvements at Pats Peak Ski Area

Henniker, NH, PATS PEAK, southern New Hampshire's favorite mountain, enters into its 54th consecutive ski and snowboard season under the same local family ownership. Pats Peak is pleased to announce a list of capital improvements for the 2016-2017 season.

"We are fortunate to have committed ownership that continues to re-invest wisely allowing us to offer the very best product and service. We know that New England winters can vary in temperature and natural snowfall therefore we strive to have exceptional snowmaking to give our guests time to enjoy the slopes no matter what the weather," commented General Manager, Kris Blomback.

This year's exciting improvements include:

Additional Energy-Efficient Snowmaking Fan Guns and New Snowmaking Power Line

Snowmaking is an integral part of the ski season. The snowmaking efforts continue to enhance each and every season to provide even more snowmaking power to the already impressive 100% state-of-the-art snowmaking coverage. This year's investment is the addition of six additional Fan Guns including four turbo guns from Snow Machines Inc. and two HKD Fan Guns. A new snowmaking power line is also being installed to double the amount of fan guns that can run at the same time to combat Mother Nature's fickle temperament. Running equipment when the weather is optimal is the best way that Pats Peak can reduce its energy foot print.



Pats Peak was the first ski area in New Hampshire to offer snowmaking and continues today to be an industry leader. "Our goal is to open more terrain faster and sustain it longer through stretches with marginal winter temperatures. These new snow guns and new power line will help make this possible even faster than in previous seasons", says Blomback.

More Rental Equipment and Self-Check-In System in the Rental Shop

The 9,600 square foot Starting Gate Rental Shop is northern New England's largest rental shop. The Rental Shop will continue to provide fast service to renters with a new self-check-in service. This program will store renter information to make each rental process quicker to get out on the slopes. Every season the Starting Gate Rental Shop adds to its already impressive rental fleet. This season renters will find 300 pairs of Elan skis added to the

rental fleet.

Updated Wireless Internet Access

With the demand of wireless internet access capabilities increasing, Pats Peak is adding high-capacity access points to increase Wi-Fi speed and reliability throughout their lodges.

New Website

The website, patspeak.com, will get a facelift. A new responsive interface that will make viewing on mobile devices easier and a new super-slick e-commerce system are two exciting new features. This systems will link directly with the point-of-sale on-mountain systems making for smoother transactions.

Additional Seasonal Lockers

To be able to keep equipment at the mountain and not have to bring it back and forth from the house is something that skiers/riders can take advantage of with additional seasonal lockers including some big family size lockers. With the consistently increasing number of families that call Pats Peak their "home" mountain, this is sure to enhance everyone's on-mountain experience.

Great Season Pass Rates – Many Affordable Options

PATS PEAK is close to home; located only twenty minutes from Concord, forty minutes from Manchester, and ninety minutes from Boston. Skiers and Riders can enjoy their winter season close to home at PATS PEAK, with great skiing and riding on incredible snow with ▶

Open Friday evenings 5:30 - 8:30PM
Saturday & Sunday from Noon to 5PM

603-455-0182
567 West Shore Road • Bristol, NH
www.newfoundlakevineyards.com

Seattle-Havana-Tehran Poster Exhibition

Preview reception with international foods and live music, Mon., Aug. 29, 5:30-7:30 p.m.

Roundtable and gallery walk-through with curators Daniel R. Smith of Seattle, Pepe Menéndez of Havana, and Iman Raad of Tehran, Tues., Aug. 30, 4-6 p.m.

August 30-December 4

Visit keene.edu/tsag, for more information about this and other exhibitions and events happening this fall.

All exhibitions are free and open to the public.

Keene
STATE COLLEGE

Thorne-Sagendorph Art Gallery | www.keene.edu/tsag

To be included in this monthly publication please call Debbie at 1-800-281-2859 or visit www.granitequill.com

outstanding customer service. PATS PEAK Season Passes provide great value for guests who ski or ride frequently. An early season discounted Season Pass rate is available until September 6, 2016. For PATS PEAK Season Pass prices and products and to order online visit <http://www.patspeak.com/winter/seasonpasses.html>.

Pay-One-Price (Pop) Saturday Nights – Under The Lights

PATS PEAK continues its most popular program, Pay-One-Price (POP) Saturday Nights, whereby one low price on Saturday nights allows access to lesson tips, lifts, tubing, rentals, entertainment, bonfires and more from 3pm to 10pm (tubing hours 5pm to 10pm). POP Group discount is available for 15 or more people by contacting Group Sales. It's the most affordable night skiing in all of New England.

Adult Clinics - For Beginners Through Advanced

Weekday Lesson Clinic, the most cost effective way to learn or improve your skills with lots of attention on individual development. This is the perfect program for anyone with flexibility to take time off during the week. Skiers & Snowboarders of all abilities welcome! Adult Clinics include a professional lesson clinics with the Pats Peak Snowsports School, a morning half-day lift ticket and lunch - all for less than the cost of a Half-Day Lift Ticket! Adult Clinics can be taken Monday, Tuesday, Thursday or Friday morning, starting the January 3, 2017 until the end of the season (excluding Wednesdays, Monday of Martin Luther King, Jr. Day, February

President's Week and NH School Vacation Week). These clinics meet at 10am at the Snowsports School Meeting Place. Discount Adult Clinic Cards are available: \$175 Card for 5-Adult Clinics; \$300 Card for 10-Adult Clinics; \$40/day Guest for a Day/Try our Adult Clinic; \$125 Card for 5-Adult Clinics for a Season Pass Holder; \$200 Card for 10-Adult Clinics for a Season Pass Holder; \$30/day Guest for a Day/Try our Program for a Season Pass Holder. The Adult Clinic Cards are transferable and may be used for multiple transactions on one day. They are good for the ski and ride season in which they were purchased.

Wow – Women's Only Wednesday – Ski/Snowboard Clinic

On Wednesdays, starting January 4, 2017, women can participate in the WOW, Women's Only Wednesday, Program for seven weeks. Women start the day off at 9am by enjoying a continental breakfast and an exciting morning discussion, designed specifically for women. Discussion topics include: skiing/snowboarding fears and risk factors, yoga, skiing/riding exercises, nutrition, strength & power, stance and balance, physical and psychological gender differences, confidence building, equipment and boot fitting, and video analysis to enhance basic skills and improve personal skiing/snowboarding. After morning discussions, participants head out onto the slopes for on-hill clinics taught by women only. The morning ends with a delicious lunch with instructors, allowing students and instructors to discuss their morning on the slopes. The cost is only \$289 for a full 7-week program, lift, lesson, morning

discussions, continental breakfast and lunch (\$215 for Season Pass Holders). Skiers/Snowboarders are welcome to sign up at the Pats Peak Snowsports Desk to "Try our Program" for a daily fee of \$60/day for the WOW Program.

Adult/Corporate Night Racing – Open To All Abilities

Adults can get in some time on the snow during weeknights and spend it with friends in the PATS PEAK Adult/Corporate Night Racing Series. Races are scheduled Monday through Thursday starting January 2, 2017 and conclude at the end of NH School Vacation Week. Races are held weekly, weather permitting. The entry fee guarantees seven races, which count towards the finals.

Any make-ups (to reach seven races) will be held on Thursday and Friday nights in March. Medal points will be awarded to individuals and medal points will go towards their team score. The top 5 Teams from each night qualify to race in the finals and enjoy the complimentary banquet.

Individuals or those who don't have a complete team can easily be placed on other teams. The cost is \$700 per team and includes weekly races, a lift ticket from 3pm to 9pm on race nights, prizes and après-ski party each race night. This racing series competes in the NASTAR dual GS format. Teams consist of five to seven skiers or snowboarders at least 21 years of age and older. Individual and team rankings are based on a points system to determine finishes. Prizes are awarded to individual men, women, and teams, both weekly and cumulatively.

The Songo River Queen II

**May - October
Daily Cruises in Season**
Visit our website for schedules & pricing

- Theme Cruises
- Season Passes
- Private Charters

Long Lake offers some of the most beautiful scenery in the region!

\$2.00 OFF Adults
\$1.00 OFF Children
Expires 10/10/16

Rt 302 / The Causeway • 841 Roosevelt Trail • Naples, Maine
207-693-6861 www.songoriverqueen.net



STRAWBERRY BANKE MUSEUM

Portsmouth, New Hampshire

In the Montrone Family Gallery, Thales Yeaton House. Open daily May 1 through October 31. Included with regular admission.

This exhibit at Strawberry Banke Museum focuses on the maritime history of Portsmouth NH and the Seacoast, showcasing a collection of models and paintings of ships built in Portsmouth and the stories of the people who built and sailed them.

Eight beautifully-crafted models of Portsmouth-built sailing ships form the centerpiece of the exhibit and trace the urgency of the American Revolution, the history of the Triangle Trade and the knife's edge balance of the Civil War. Paintings and historical artifacts once owned by ships' masters and builders add insight into life in maritime Portsmouth.



14 Hancock Street
Portsmouth NH 03801
603.433.1107
StrawberryBanke.org

Calendar of Events

Three Dog Night to play

September 1, 2016 7:30 PM \$69 and up
The Flying Monkey 39 South Main St.
Plymouth, NH. Phone: 603-536-2551
American music icons, Three Dog Night, now in its 4th decade, claims some of the most astonishing statistics in popular music. In the years 1969 through 1974, no other group achieved more top 10 hits, moved more records or sold more concert tickets than Three Dog Night. Since 1986, the band has performed over 2,200 shows including two Super Bowls. Don't miss a rare intimate performance at The Flying Monkey!

Lancaster Fair

September 1, 2016 8:00 AM
\$15 (Thur, Fri, Mon) \$16 (Sat, Sun)
Children under 36" Free (with paying adult) 516 Main St. Lancaster, NH NH
Phone: 603-228-0836

Come to the Lancaster Fair, the best fun-filled family event in northern New Hampshire. From the rides on our colorful midway to the agricultural and motorized competitions, there's so much to do. See 4-H Exhibits and the region's finest homemade crafts, fresh vegetables, and flowers. Watch horse pulls, sheepdog trials, and an oxen log obstacle course. test your skills in the pie-eatin' and sunflower seed spittin' contests. The Demolition Derby, and Big Rig, 4-by-4 Truck and Farm Tractor Pulls provide high-octane excitement. Live Country music by Lorrie Morgan and Pam Tillis on Saturday night.

Parrot Head Party Cruise on Lake Winnepesaukee

September 2, 2016 7:00 PM
\$52 adult, \$42 child
M/S Mount Washington
Lakeside Ave., Weirs Beach, NH 03246
Phone: 603-366-5531

Experience the romance of Lake Winnepesaukee at night on a dinner cruise aboard the M/S Mount Washington. July 11 and August 29 is "Margaritaville" on the lake. If you are a Jimmy Buffet fan this cruise is for you. Music provided by: Island Castaway Band. From Weirs Beach 7-10 PM and from Meredith 7:30-10:30 PM

more info: <http://www.cruisenh.com/ParrottHeadCruise.php>

Herrmann's Royal Lipizzan Stallions

September 2, 2016 7:00 PM
In advance \$20 adult \$15 child 6-12. At the door \$25 adult \$20 child 6-12
153 Paige Hill Rd., Goffstown, NH 03045
Phone: 603-497-2343

To benefit UpReach Therapeutic Equestrian Center. General Admission seating. Doors open 1 hour prior to performance start time. Concessions and souvenirs will be available for purchase.

42nd Railfans' Day at Conway Scenic Railroad

September 3, 2016 8:00 AM
Adult fares vary from \$17.00 and up.
38 Norcross Circle, North Conway, NH
Phone: 603-356-5251

Join us as we celebrate our 42nd Railfans' Day with a great day of railroading. Special demos, freight cars, cabooses, mixed trains will be running. Railroadiana Flea Market will be on site. Reservations suggested.

Nearer to Nature Walks

September 3, 2016 9:00 AM
Cost is \$7/member; \$9/non-member
23 Science Center Rd
Holderness, NH 03245
Phone: 603-968-7194

Great for adults and older teens! These walks focus on Science Center Naturalist, Margaret Gillespie's recently published book called Nearer to Nature. The book walks you through the seasons, delving into nature's mysteries. Join Margaret to explore the local flora and fauna at one or more places. (7/19) Unsworth Preserve in Sandwich Explore this secluded jewel, a preserve owned and managed by the Squam Lakes Conservation Society. We'll wind our way along an extensive wetland and through forests in search of wildlife signs and sounds, checking for unusual flora. (8/18) Chamberline Reynolds Memorial Forest, Center Harbor Access Squam Lake by land, meandering through upland forest, crossing a swamp boardwalk, and exploring shoreline trails at this New England Forestry Foundation preserve managed by ► Squam

Calendar of Events

Lakes Association. (9/3) Squam Lakes Natural Science Center The Science Center encompasses 200 acres but many delightful spots are off trail or seldom seen. Explore lesser known sites at the Science Center and conclude with a wildlife visit from an animal whose relatives roam the surroundings when all is quiet.

2016 Hampton Beach Seafood Festival

September 9, 2016 4:00 PM
 \$5 Fri \$10 Sat \$8 Sun kids under 12 FREE
 160 Ocean Blvd. Hampton Beach, NH
 Phone: 603-926-8717
 HAMPTON BEACH SEAFOOD FESTIVAL
 SEPTEMBER 9, 10, & 11, 2016 Hours:
 Friday 4 to 9 PM, Saturday 10 AM to 9 PM,
 Sunday 10 AM to 6 PM. Come Sample
 Our World Famous SEAFOOD at New
 England's Largest Beach Party! A unique
 spectacular event for the entire family!
 60 Restaurants Serving an Abundance
 of Seafood AND MUCH MORE! Annual
 Lobster Roll Eating Competition on

Saturday afternoon at 2 pm! 100's of Merchants with End of Season Sidewalk sales! 80 Arts & Crafts Vendors Kiddie Land: trains, games, face painting, entertainment, and more surprises!!!! Culinary Chef Demonstrations by Pat Whitley Saturday and Sunday 11 am to 2 pm. Continuous Entertainment on two stages: from Rock to Reggae!!! Our Beach Cabana Bar with live entertainment! Spectacular Fireworks Shoot on Saturday night 8:15 pm Sky Diving Extravaganza on Sunday afternoon 5 pm. Free shuttle service and parking at over 12 satellite parking lots IT'S THE BEST BEACH PARTY EVER!!!! www.hamptonbeachseafoodfestival.com
 Phone 603-9268718 \$5 Adults on Friday & Sunday \$8 Adults on Saturday Children under 12 free.

America We Support You Freedom Walk

September 11, 2016 5:00 PM
 Walk is FREE, Rt 16 A

Covered Bridge, Jackson, NH 03846
 Phone: 603-383-9356
 We Will Never Forget! Please, where ever you will be on this date stop, pray and remember. The Freedom walk was started in 2005 by Pentagon employees to commemorate and honor all lives lost in the attack on September 11th, this event has now become a national tradition. In 2006, 135 Freedom Walks were held across the nation, including one in Jackson! On September 11, 2015 it is time, again, to gather at the Jackson Covered Bridge at 5 PM. Plan to begin your walk around the Jackson loop at 5:30 PM. This walk is to honor the victims of September 11th, reflect on the freedom we enjoy in America, and pay tribute to all our Military Men & Women past and present, all our Police, Fire & Rescue personnel past and present. The first 50 people to arrive at the bridge will receive a flag and a candle to light for hope. Bring your family, your friends, your co-workers, tell your guests, remind everyone to walk with us as a united America! To register for the Freedom

Walk, call the Jackson Area Chamber of Commerce: 603-383-9356. God Bless America!

The Winemaker's Kitchen Cooking Series - Marinades and Dressings

September 14, 2016 6:00 PM
 \$25 + 9.0% NH Tax & Gratuity
 345 Route 101, Amherst, NH 03031
 Phone: 603-672-9898
 Class Line-Up: Using Marinades and Dressings in New and Unique Ways - Making Wine Vinaigrettes - Making Marinades and Understanding the Theory Behind Using Them - Covering the Bases for Creating Successful Salads Wine will be paired and/or prepared with each item. This class is interactive and fun! Amy LaBelle, Founder and Winemaker at LaBelle Winery and one of LaBelle's talented chefs will prepare each item for you to try as well as share tips for entertaining! This class is suited for couples, singles, family and friends as well as corporate colleagues. We look forward to seeing you at the next ► Winemaker's Kitchen Cooking Class! Register online

Step into class
 in style



BANANA REPUBLIC
 FACTORY STORE



WHITE MOUNTAIN HWY, NORTH CONWAY, NH
settlersgreen.com



Calendar of Events

today, space is limited!

New Hampshire Highland Games & Festival

September 16, 2016 9:00 AM
 \$20 Friday & Sunday; \$30 Saturday only;
 \$50 3-day weekend pass.
 60 Loon Mountain Road, Lincoln, NH
 Phone: 603-745-5666
 Grab your kilt for the 41st Annual New Hampshire Highland Games & Festival!

One of the largest Scottish festivals in the country, the Highland Games will feature top Scottish bands, classic Highlander cuisine, Scottish heavy athletics, and dozens of other unique cultural attractions.

Auburn Day and 24th Annual Duck Race

September 17, 2016 10:00 AM Free
 Auburn Village (across from the Griffin

Free Public Library and waterfall)
 22 Hooksett Road, Auburn, NH 03032
 Phone: 603-370-0151

Enjoy a fun-filled day for the whole family with a celebration for the town of Auburn featuring the famous duck race, Salmon Falls apple pie contest, antique car show, New Hampshire artisans, crafters and vendors, children's activities, food and more. Music will be provided by DJ Paul Lepine. There will be a special children's blow up duck race and then the 24th annual duck race will begin at 2:30 p.m. Children's activities include Wildlife

Encounters, Heidi Gorman the Clown, Vertical Dreams climbing wall, arts, crafts and more. Don't miss ice cream and cotton candy to support the local Boys and Girl Scouts! Enjoy a variety of booths including wool and quilted goods, local honey, jewelry, sweet and desserts, cheese, maple syrup, mixes and rubs, chocolate, glassware and much more.

UNH Ocean Discovery Day

September 17, 2016 10:00 AM Free
 Chase Ocean Engineering Lab, 24 Colovos Road, Durham, NH 03824
 Phone: 603-862-2959

New England Fabrics

Worth the Visit!
 If you like Fabrics... You'll love our Store!

- Quilting • Fashion • Yarn & Knitting
- Sewing Machines • Home Decor
- Blinds • Curtains • Upholstery

Central New England's Largest Fabric Center.
 New England Fabrics & Decorating Center
 Open Mon-Sat 9:30AM-5:30PM
 Open Late on Fridays 'til 8PM

newenglandfabrics.com
55 Ralston Street, Keene, NH • 603-352-8683

Come Explore the Finest Selection

of Locally Crafted & New England Inspired Gifts



- Gifts • Jewelry
- Foods • Clothing
- Art • And More!

New Artisans every week!
Over 180 Vendors!

Shop anytime at marketplaceneuengland.com

Marketplace **M** New England **7 N. Main St., Concord, NH**
 603.227.6297 • www.facebook.com/marketplace-new-england



EVINRUDE OUTBOARDS
 E-TEC

• BOATS • MOTORS • ACCESSORIES • SUPPLIES

HAGGETT'S MARINE, INC.

112 Airport Rd., Concord, NH • 603.224.0171 • www.haggettsmarine.com

Enchanted Lace

A Specialty Boutique...

Offering a complete line of decorative lace for the home:
 Curtains • Table Cloths
 Runners • Doilies • Placemats

Salzburg Square
 292 Route 101, Amherst, NH 03031
 (603) 673-5223



— OPEN 7 DAYS —
www.enchantedlace.com

Ask about our Dream Flights

Aerial Tours starting \$69 per person

SEACOAST LIGHTHOUSE AERIAL TOURS

603-373-8743 • www.seacoasthelos.com
 44 Durham Street • Portsmouth, NH



Seacoast Helicopters



YANKEE FARMER'S MARKET

Buffalo Farm & Store

Great Meat Package Deals

- Buffalo:** Burger, Steaks & Ribs
- Grass Fed Beef:** Ground and Burgers
- Pasture-Raised Pork:** 1/4 & 1/2

Compost Available! Great for your garden!

Specializing in hormone-free & antibiotic-free meats.
 BUFFALO * GRASS FED BEEF * PASTURED PORK * CHICKEN * LAMB * VENISON * ELK

www.yankeefarmersmarket.com

Calendar of Events

Dive into marine science! At Ocean Discovery Day, UNH will open the doors of its marine research laboratories to highlight how scientists and students engage with our rich natural resources and utilize our proximity to the ocean for their studies. Join us at the Chase Ocean Engineering Laboratory on the UNH Durham campus and enjoy family-friendly, hands-on demonstrations, tours and talks. Check out the hand-powered wave tank, watch animations of whale behavior underwater and drive mini-ROVs (remotely operated vehicles). Demos and talks on topics such as ocean renewable energy, aquaculture, seafloor mapping and underwater exploration are offered, while hands-on activities include marine life touch tanks, lobster banding and fish printing. Join us for this free day of ocean discovery!

Hobo Harvest Time Express - NH's Classic Fall Foliage Experience!

September 17, 2016 10:00 AM

Adult \$20.00 Child \$15.00 (ages 3-11) 2 and under free. Hobo Railroad
64 Railroad Street, PO Box 9
Lincoln, NH 03251
Phone: 603-745-2135
New Hampshire's Classic Fall Foliage Experience! Your one hour and twenty minute round-trip excursion will take you through a naturally wooded area along the Pemigewasset River where you'll enjoy NH's beautiful fall foliage as well as complimentary samples of NH MADE seasonal items and specialty products aboard the train. You'll also have an opportunity to enjoy lots of on-site activities including our Hobo Harvest Farm Stand & Farm Yard, pumpkin bowling, ring toss, sack races and bean bag toss. Make sure to bring your camera as you won't want to miss our now-famous "Corn Stalk Critters" – these life-sized Scarecrows have been created especially for this event by the Annalee Doll Co. This year's theme, "Scarecrows

of the Oval Office", will feature a variety of popular US Presidents and the top two contenders for the 2016 Presidential Election! Train fare: Children (3-11) \$15.00; Adults \$20.00; Children 2 and under ride FREE - Includes access to the Hobo Farm Stand & Farm Yard as well as access to our collection of antique Tractor and Farm Equipment display!

Mountain Summers: Tales of Hiking and Exploration in the White Mountains from 1878 to 1886

September 21, 2016 4:00 PM Free
34 Highland Street, Plymouth, NH 03264
Phone: 603-535-3210

What was it like to visit the White Mountains in the late 1800s, and what did the women visitors do when they came here? Mountain Summers, a collection of letters and diaries from 1878-1886, reveals the personal and adventurous experiences of four fascinating women visiting and exploring the region. They did not just sit on the porch of the hotels. Instead, they worked on developing new trails, collecting plant

specimens, and discovering new places. Their endeavors took them deep into the woods, through the krummholz, and up onto the summits where they would often spend hours recording details about their climbs and the resultant views. Come hear their adventures from the firsthand accounts preserved in this rare collection.

Littleton Area Art Festival - Art In The Mountains

September 23, 2016 5:00 PM

Free for public Artists, please contact for rates. Littleton and surrounding towns
Littleton, NH 03561
Phone: 603-444-6561

Join us the 48th Annual Art Festival featuring 3 days of ART EVENTS throughout the Littleton area. Art In The Mountains will feature a juried art show as well as musical, performing, and culinary art events. Got a Classic Car or just want one? The event also includes the Littleton Lions Annual Antique Car Show & Parade.

Join the Parade...
A UNIQUE HOME TOUR Experience




October 8-10th • 10am-4pm Daily
One Ticket • Good All Weekend • Start at Any Home
lakesregionPARADEofHOMES.com



edibles,
natives,
ornamentals
& local



64 Breakfast Hill Rd.
Greenland, NH • 603.436.2732
RollingGreenNursery.com

Hodgepodge Yarns & Fibers

LIKE TO KNOT?



COME IN AND BROWSE!

59 Belknap Avenue, Newport, NH (603) 863-1470
Mon.-Fri. 9:30-5:00; Sat. 9:30-4:00; Closed Wed. • Mastercard/Visa



The Four Corners Brick House
IN HISTORIC GILMANTON, NEW HAMPSHIRE

Antiques, Reproductions, and Quality Consignment

Open Labor Day Mon. Sept. 5; Tues.-Sat. 10-5; Sun. 12-4
SALES THROUGHOUT THE HOUSE
fourcornersbrickhouse.com

525 Province Rd.
Gilmanton, NH 03237
267-6949

IN New Hampshire
Your Guide to What's Happening in the Granite State!

To advertise in next month's issue call Deb at
800-281-2859

The 140th

DEERFIELD FAIR

New England's Oldest "Family Fair"®

September 29 & 30 October 1 & 2



All The Food You Can Eat!
Sausages, Candy Apples,
French Fries, Giant Donuts,
Homemade Fudge, Soup In A
Bread Bowl



I can't believe ALL
the things to do!



Maybe you'll find this little guy chillin'
in the Animal Barns...



Disc Dogs Agility Challenge



Sausage, Peppers & Onions, Oh My!

In-Door Activities!
4-H Barn, Animal Barns,
Craft Barns, Made In NH Building,
Arts & Crafts, Sheep Show,
Alpaca Show, School House,
Farm Museum

Open Thursday-Saturday 8-10 & Sunday 8-7
Ride Bracelet Days: Friday 9-5 & Sunday 9-5



Just A Boy & His
Big Green Tractor!

Adults: \$10/ea • Children 12 & Under: FREE • Parking is Free
Seniors: September 29 & 30, \$7/ea • Military: FREE w/ID

DEERFIELDFAIR.COM