

IN **New Hampshire**

JANUARY 2020

Your Guide to What's Happening in the Granite State



ECMSS
Presorted Standard
U.S. POSTAGE
PAID
Permit #130
Portsmouth, NH
Postal Customer

FREE See us online at
www.granitequill.com

YOUR WINTER VACATION STARTS AT THE BASE OF **MOUNT WASHINGTON**

GreatGlenTrails.com
603-466-3988

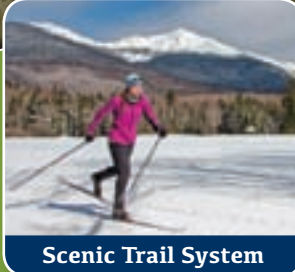
Just 25 minutes north of
North Conway on Rt. 16
in Pinkham Notch

Mt. Washington **SnowCoach**

Limited Seating — Book Online!



SnowCoach Tours



Scenic Trail System



Family Fun



Best Nordic Ski Shop



Great Glen Trails

Explore 45 KM of family-friendly trails at the base of Mt. Washington
Cross Country Skiing • Snowshoeing • Snow Tubing • Fat Biking



Ski-In



Ski-Out



The Glen House

Located trailside at Great Glen Trails, The Glen House offers fine accommodations, an award-winning tavern, and great food at The Notch Grille. Book your stay at TheGlenHouse.com or call 603-466-3420.

Alpine skiers rejoice — we're just two miles north of Wildcat Ski Area!

Winter dining at the Carriage House Restaurant

Castle in the Clouds boasts a beauty with every season, including during the quiet, snow-filled months. From January 4th through March 29th, 2020, the Carriage House Restaurant will be open for lunch on Saturdays and for a brunch buffet on Sundays. While the mansion will be closed, the public can enjoy winter views and the same delicious dining offered during the main season from the warmth of the Carriage House Winnepesaukee Room. The Winni

Room, known to many as an event space for wedding receptions, holiday parties and Castle programming, offers a rustic charm with exposed beams and wrought iron, with grand views of the



lakes and mountains through large picture windows that line the lakeside wall. Lunch will be served on Saturdays from 11:30am-3:30pm, with a comforting seasonal menu available online at castleintheclouds.org. On Sundays, the popular brunch buffet will be offered from 10:00am-2:00pm. A large spread of breakfast favorites, lunch items, and chef's special creations ensure there is something for every taste. Though many buffet items change weekly, guests can count on classics like pancakes or French toast; scrambled eggs; bacon or sausage; home fries; macaroni and cheese; a "catch of the day"; Caesar and fruit salads; assorted pastries and desserts; and vegetarian options. Coffee, tea, juice, milk and hot chocolate are included, and a cash bar is available. Brunch pricing is \$26 for ages 18 and up, \$17 for ages 12-17, \$12 for ages 3-11, and free for children 2 and under with a paying adult. All seating is on a first-come, first-serve basis as there are no reservations. To access the Carriage House Restaurant, please use the Castle's year-round property entrance located at 586 Ossipee Park Rd. on Route 171 in Moultonborough. Due to trail damage, the Carriage House Restaurant is not accessible by snowmobile until further notice.

Castle in the Clouds was listed to the National Register of Historic Places in 2018. It is operated by the Castle Preservation Society, a 501(c)(3) nonprofit organization, whose mission is to preserve, interpret, and share the buildings and landscape of Castle in the Clouds as a cultural resource for the benefit of the public. For more information call 603-476-5900 or visit castleintheclouds.org.

IN New Hampshire

Leigh Bosse: Publisher

Joyce Bosse: Editor

Christi Macomber:
Advertising Design

Gail Stratos: Publications
Design & Layout, Advertising
Design, Production, Website

Deborah Belanger:
Account Representative

Mary Yuryan:
Account Representative

Also from The Granite Quill:
The Messenger

Granite Quill Publishers

246 West Main St.,

Hillsborough, NH 03244

Phone: 603-464-3388

Fax: 603-464-4106

granitequill@mcttelecom.com

**To advertise
in next month's issue:**

Call Deborah at 800-281-2859

HC
THE HOTEL
CONCORD

IN
TOWN
CONCORD

Hannaford

PRESENT THE 2ND ANNUAL
WINTER
FEST
20 20

JANUARY 24TH & 25TH

FRIDAY 3PM - 9PM
SATURDAY 11AM - 4PM

DOWNTOWN CONCORD

ICE
CARVING
COMPETITION

Winter Shopping | Ice Bars + Luge
Corn Hole | Ice Carving Demos
S'mores Stations | Warm Refreshments

Games & Activities

Shuttle to Black Ice Pond
Hockey

for details visit: www.intownconcord.org



**Buying Old Comic Books
CASH OFFERS
Call us at 603-568-6848**

FRANKLIN OPERA HOUSE
Arts and Entertainment Center
316 Central St. - City Hall - Franklin, NH

Don't Miss This One!

Jordan Tirrell-Wysocki Trio

Saturday January 18 7:30 pm

Reserved Seating \$14-\$18
more info and tickets online
www.FranklinOperaHouse.org
or call (603) 934-1901 during office hours

'Festival of Planes' now includes nightly demonstration of working toys

Show each evening at 6:30 p.m. added to AviationMuseum's first-ever holiday toy plane and model aircraft show. LONDONDERRY, N.H. - As toys, they were meant to be played with. And five nights a week at 6:30 p.m., that's exactly what will happen. Each evening it's open to the public, the Aviation Museum will host a demonstration of working vintage toys as part of its first-ever holiday 'Festival of Toy Planes.'

The program includes working toy coin banks promoting Lindbergh's 1927 solo flight across the Atlantic, a plastic two-player Disney airplane game with Goofy as pilot, and magnetic and friction-powered UFO toys.

The demo also includes toy planes for young children that whir, beep, and prowl the floor like ancestors of today's robot vacuums.

Superheroes represented include Wonder Woman, piloting her translucent aircraft while crying out warnings to evil-doers when tapped on her head.

But the audience favorite so far is a metal mechanical wind-up toy, 'Duck on Bike,' still in its original cardboard box. Wound up by a metal key, 'Duck on Bike' pedals a bike in a wide circle while three feathers spin rapidly above the duck's head. "Maybe it's the simplicity, but something about 'Duck on Bike' captures people's imaginations," said Jeff Rapsis, executive director of the Aviation Museum of New Hampshire, where the exhibit is on display through Sunday, Jan. 12. During the 'Festival of Toy Planes,' the museum is open Wednesday through Sunday from 5 to 8 p.m. to give families shopping or viewing holiday lights a chance to stop by and enjoy the exhibit, which features thousands of toy planes and model aircraft from three separate collections.

The exhibit features aviation-themed toys, models, puzzles, and promotional items from throughout the 20th century, from the Wright Brothers to Buzz Lightyear. Also on display are vintage aircraft piloted by celebrities including Bugs Bunny, Mickey Mouse, Elmo, and Barbie. The exhibit uses toys and model aircraft to trace aviation history from the beginning of powered flight through to the present day.

"For a century now, children have been finding toy planes and model aircraft among their holiday gifts," Rapsis said. "No matter what decade you grew up in, our 'Festival of Planes' exhibit will help you rediscover the toys that first acquainted you with the magic of flight." The 'Festival of Planes' exhibit of aviation toys ▶





and model aircraft is included with museum admission of \$10 per person; \$5 seniors 65+, veterans/active military, students under 13. Members and children under age 5, free. In addition to the

special evening hours for the 'Festival of Planes,' the museum is open Fridays and Saturdays 10 a.m. to 4 p.m. and Sundays 1 to 4 p.m. The walk-through exhibit is designed to be an immersive experience, complete with Christmas trees, a fire-placed living room, and a starry winter sky filled with model planes flying overhead. The AviationMuseum of N.H. is located at 27 Navigator Road, Londonderry, N.H. It can be reached via Exit 1 on Interstate 293 in Manchester and heading south on South Willow Street past the Mall of New Hampshire entrance; then follow the brown "AviationMuseum" directional signs.

The 'Festival of Planes' exhibit is supported by the Top Fun AviationMuseum of Fitchburg, Mass.; Manchester-Boston Regional Airport; and the Cogswell Benevolent Trust. The primary source of the aviation toys and model aircraft on display is the collection of the Top Fun Aviation Toy Museum, which totals more than 3,000 items and is on loan to the AviationMuseum of N.H.

No items in the exhibition will be for sale, but the Aviation Museum gift shop offers a wide range of aviation-themed holiday gifts, keepsakes, and mementos. All proceeds support the AviationMuseum, a non-profit 501(c)3 tax-exempt organization dedicated to celebrating New Hampshire's role in aviation history and inspiring tomorrow's pioneers, innovators and aerospace professionals. The 'Festival of Planes' exhibit of aviation toys and model aircraft will be open through Sunday, Jan. 12 at the AviationMuseum of New Hampshire, 27 Navigator Road, Londonderry, N.H. For more information, visit www.aviationmuseumofnh.org or call (603) 669-4820. Follow the AviationMuseum on social media at www.facebook.com/nhahs.

All about raising service dogs

Come to the Nashua Public Library on Thursday, January 9, at 7 p.m. to learn about opportunities to raise service dogs. The New Hampshire region of Guiding Eyes for the Blind needs

volunteers to nurture puppies to prepare them for guide dog training. They also need volunteers to puppy-sit for short periods of time. At the library, you can meet a raiser and some pups, feel the joy of loving and teaching these dogs, and learn about the strong support available every step of the way. Registration is required; go to tinyurl.com/npllectures. The library is



located at 2 Court Street. Visit nashualibrary.org/visit/directions for directions and parking information. For information, contact Carol at carol.eyman@nashualibrary.org or (603) 589-4610.



MQX Quilt Festivals®

New England 2020

Manchester, NH

DoubleTree Hotel/Convention Center

Classes begin April 14, 2020
Public Quilt Show April 16-18

MQX is not exclusively for machine quilters. There are classes for everyone on any size machine... piecing, quilting, art, design, business, and handwork!

Don't miss out on the fun!

- **Quilt competition** with over \$30,000 in prizes and prize money
- **Over 100 classes** offered in all aspects of piecing and quilting
- Ice Cream Social, Awards Ceremony, Quilters Fun Night with **Kyra Reys**, and Friday Night Dinner with **Mathew Boudreaux** (*Mr. Domestic*)
- **Special Exhibits:**
 - Men at Work – and Play! *Curated by Scott Murkin*
 - Noble Menagerie – The Barnyard Series by Timna Tarr
 - Bob Ross Cherrywood Challenge
 - LANE Challenge – *by the Longarm Quilters of New England*

www.MQXShow.com
603.778.6994

MQX Sponsors:
Gammill Quilting Systems,
ABM Innova,
Superior Threads,
Handi Quilter, IntelliQuilter, Janome

Machine Quilters Exposition, LLC

Get the Led Out returns to the Capitol Center for the Arts

Get the Led Out (GTLO) returns to the Capitol Center for the Arts (Concord, NH) on Saturday, January 11, 2020 at 8PM. For any classic rock fans, this is the Zeppelin music concert



to see. The Philadelphia-based group consists of six veteran musicians intent on delivering Led Zeppelin live, like you've never heard it before. Dubbed by the media as "The American Led Zeppelin," GTLO offers a strong focus on the band's early years. They also touch on the deeper cuts that were seldomly, if ever, heard in concert. GTLO re-creates the songs in all their depth and glory with the studio overdubs that Zeppelin themselves never performed. When you hear three guitars on the album, GTLO delivers three guitarists on stage. GTLO brings what the audience wants: a high energy Zeppelin

concert with an honest, heart-thumping intensity. GTLO has amassed a strong national touring history performing at major clubs and performing arts venues across the country. It's been their mission as a band to bring the studio recordings of "the mighty Zep" to life on the big concert stage.

Tickets for the January 11 Get the

Get Cozy with the Portsmouth Symphony Orchestra

January 12: "Impressionistic Piano Trios: Bridge to Ravel" at The Dance Hall.



The Portsmouth Symphony Orchestra (PSO) 'Get Cozy' chamber music series continues Saturday, January 12 at 3:00pm with

"Impressionistic Piano Trios: Bridge to Ravel" at 3:00pm at The Dance Hall in Kittery, ME.

Musicians Mary Towse-Beck, piano, Susanne Powers, violin and Dorothy Braker, cello weave together an impressionistic program that also includes the first World War as a

Led Out performance are \$48.50/\$38.50 /\$28.50, plus any applicable fees for phone/Internet sales. They may be ordered by calling the Capitol Center for the Arts at (603) 225-1111 or online at ccanh.com. Tickets may also be obtained at the CCA's recently-relocated box office at 16 South Main St., Concord, NH, which is open Monday - Friday from 2PM to 6PM.

backdrop. In 1904 British composer and accomplished violist Frank Bridge performed in the British premiere of the newly completed Debussy String Quartet. Bridge's Phantasie Trio, written in 1907 with hints of Debussy as well as Gabriel Fauré, won First Prize in the Cobbett Competition for English Chamber Music.

As one of Britain's best-known Impressionistic composers, Bridge went on to teach composer Benjamin Britten. Get Cozy chamber concert tickets are \$16 in advance (children 10 and under free) or \$20 at the door and can be purchased online from the PSO's website. Seating is limited and at-the-door tickets are not guaranteed to be available.

40 km of cross country ski and snowshoe trails groomed for both classic and skate skiing connecting Intervale with North Conway Village.

Don't Miss these Annual Events ...

Whitaker Woods Snowshoe Scramble
4-mile Snowshoe Race
Saturday, January 18th

31st Annual Chocolate Festival
"Named One of the Top 11 Chocolate Festivals in the World"
Sunday, February 23rd

Stay and Ski Free Lodging
Guided Snowshoe Walks
Snowshoe Yoga Tours
Fat Tire Biking
Dog Friendly

Mt. Washington Valley Ski Touring & Snowshoe Center
279 NH Route 16-302, Intervale, NH
603-356-9920 • MWSkiTouring.org

grounds
bakery, coffee, candy shop

New London's Bakery, Coffee and Candy Shop

Open 7 days a week; Mon-Saturday 7a-5p, Sundays 8a-3p

374 Main Street, New London • 603-526-6010
grounds374mainst@gmail.com

YANKEE FARMER'S MARKET
Buffalo Farm & Store

Great Natural Meat Packages
Get Healthy this New Year by choosing farm raised meats!

(603) 456-2833
360 Route 103 East
Warner, NH

Open
Tues & Thurs & 10-5,
Sat. 9-4
(By appt Mon & Fri,
Closed Wed & Sun)

Join our **10 Week Meat CSA** & enjoy a delicious variety of our healthy, natural meats.

www.yankeefarmersmarket.com

Calendar of Events

■ JAN. 11TH

Cranmore: Vertical Challenge Family Ski and Snowboard Tour

239 Skimobile Road, North Conway, NH 03860
Phone: 603-875-3100. The Vertical Challenge will hold ski and snowboard races in a fun festival atmosphere at Cranmore on January 11th. Skiers and riders of all ages and ability levels will enjoy themselves, whether they're trying their first race or have competed in races for years. Points count not only toward NASTAR rankings, but toward qualification for the VC finals at the end of March at Jay Peak. The races are free with a lift ticket, and the tour is about a lot more than making good time on your run, too. Making a lasting positive impression on families, and especially kids, is at the heart of the VC mission. To find out more about how they do it, check out this blog post: <https://ski-vc.com/warming-up-a-ski-tour/>. For information on the Vertical Challenge, visit ski-vc.com or check the tour out on Facebook at facebook.com/VerticalChallenge.

■ JAN. 21ST

"Nourish? Arts Address

"Mind, Body, Spirit" Exhibit Opening Reception

Free. 34 Highland Street, Plymouth, NH 03264
Phone: 603-535-3210. Join us for the opening reception of our new exhibition, Nourish? Arts Address Mind, Body, Spirit. The arts can provide personal sanctuaries, life giving inspiration, and physical therapy. Simultaneously, arts experiences can create common ground and opportunities to connect us to each other. This exhibit brings together creative work from all over New Hampshire that tells the story of the power of art at this time in this place. This exhibition is on view Jan. 21 - Feb. 15, 2020. Free and open to all.

■ JAN. 19TH

World Snow Day

Participants 4-14 50% off lift tickets
18 Robert Easter Way, Claremont, NH 03743
603-748-6205. You are about to be part of an international snow festival. But what is it exactly that you are joining? • World Snow Day is part of the international FIS campaign 'Bring Children to the Snow' introduced in 2007. • World Snow Day is an annual snow festival for children and their families. • World Snow Day provides a chance to EXPLORE, ENJOY and EXPERIENCE snow. • World Snow Day

celebrates all things snow! • World Snow Day brings the global snow industry together to promote snow and the fun activities it offers. • World Snow Day is open to anyone who has already discovered snow activities or would like to. • World Snow Day both seeks to introduce newcomers to snow and to provide additional value to those who already participate. World Snow Day will be comprised of various activities, taking place simultaneously on a single weekend around the world to make for THE BIGGEST DAY ON SNOW, ALL YEAR!

HAPPY NEW YEAR!

Hodgepodge Yarns & Fibers

LIKE TO
KNIT?
COME IN
AND BROWSE!

59 Belknap Avenue, Newport, NH (603) 863-1470

Mon., Tues., Thurs. & Fri. 9:30-5:00; Sat. 9:30-4:00;
Wed & Sun. Closed • Mastercard/Visa

Coming up at the CLAREMONT OPERA HOUSE

• SAT JANUARY 25, 2020
YEE HAWS & HA HAS

featuring Nashville Country Singer
Lexi James, Comedian Paul D'Angelo



8PM show • 1 hour each with
20 minute changeover

• FRI FEBRUARY 28, 2020
A NIGHT OF COMEDY



• 3/28: Beatlemania Again • 4/25: Night of Comedy

• SAT MARCH 14, 2020
WOOD'S TEA COMPANY



CHECK OUR SCHEDULE ONLINE FOR MORE SHOWS!

— Cash Bar available at most shows —

Tickets make
Great Gifts for
any occasion!

2
ways to
win FREE
tickets!

Sign up for Facebook
and Email Newsletters

Tickets are available by calling
603-542-4433 or online at

www.claremontoperahouse.org

58 Opera House Square • City Hall Complex • Claremont, NH 03743



Vermont's premier shopping experience. Explore 18 acres
Shop inside and outside. Not your typical store



100% Solar powered



Boot Hill

We can fit your feet and lifestyle.

Over 20,000 pairs of boots and shoes in stock. Always a good sale



For people who like to shop and even those who don't.



Tax free footwear and clothing.



Valley News Reader's Choice
Best to place to buy shoes
2017 and 2018



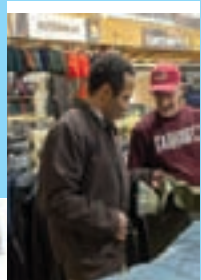
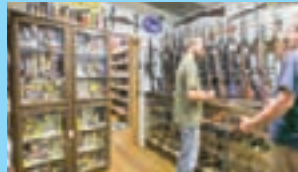
Footwear, clothing, hunting, camping, snowshoes, gifts, furniture, jewelry, cookware, equestrian supplies, pet supplies and more



sock therapy



Complete Outfitters for Man & Beast



We've got what you've been hunting



Monday-Saturday 8:30-5:30 Friday night till 8PM closed Sunday
Closed : Christmas, New Years Day , Memorial Day, 4th of July, Labor Day and Thanksgiving
286 Waits River Road Bradford, VT 800-222-9316 vermontgear.com



1 mile off I-91 exit 16 straight through the only traffic light in the county
Plenty of free parking



Free coffee and homemade doughnuts under the tent Saturdays in the summer and free cheese tasting in the fall and winter